

MEMBER OF



MORRIS GROUP
INTERNATIONAL



2022

EDITION

ACORN ENGINEERING COMPANY LIST PRICE GUIDE

PRICES IN US\$ EFFECTIVE November 1, 2022

Dura-Ware Pricing

L1P00021DM22A

All Previous Price Guide are Invalid

ACORN ENGINEERING COMPANY

Member of Morris Group International

P.O. BOX 3527 • CITY OF INDUSTRY, CA 91744 USA

Phone (800) 488-8999 • (626) 336-4561

www.acorneng.com

See Terms, Conditions & Warranty
on acorneng.com

L1P00021DM22A

Updated 9/23/22



ACORN ENGINEERING COMPANY

LIST PRICE GUIDE

TABLE OF CONTENTS

L1P00021DM22A

	MODEL NUMBERS	
VALVES		
Air Control Valve Assemblies	03/04	1
Replacement Air Control Valve Assemblies	R03/R04	2
DURA-WARE		
Lavatories		
15" Self-Rimming Classroom Sink	1900	3
17" Self-Rimming Classroom Sink	1901	3
18" x 15" Rectangular Lavatory	1950	4
20" x 15" Rectangular Lavatory - for Carrier Mounting	1950-LC-1	5
18" x 18" Rectangular Lavatory	1951	6
20" x 18" Rectangular Lavatory - for Carrier Mounting	1951-LC-1	7
18" x 22" Rectangular Lavatory - ADA Compliant	1953	8
20" x 22" Rectangular Lavatory - ADA Compliant for Carrier Mounting	1953-LC-1	9
Econo Lavatory (19-3/4" x 15-3/4") Trapezoidal Bowl	1955	10
Drinking Fountains		
18" Single Station Fountain	2010	11
15" Single Station Fountain - ADA Compliant	2012	12
30" Dual Station Fountain - ADA Compliant	2020	12
50" Tri-Station Fountain - ADA Compliant	2030	12
Toilets		
Blowout Jet Toilet - Off-Floor, Wall Waste	2100	13
Siphon Jet Toilet - Off-Floor, Wall Waste	2105	14
Bariatric Siphon Jet Toilet - Off-Floor, Wall Waste	2105-BAR	15
Blowout Jet Toilet - On-Floor, Wall Waste	2110	16
Siphon Jet Toilet - On-Floor, Wall Waste	2115	17
Siphon Jet Toilet - On-Floor, Floor Waste	2120	18
Bariatric On-Floor Toilet	2125A	19
Waterless Toilet (ADA Compliant Available)	2131	19
Urinals		
High Efficiency Urinal - Off-Floor, Wall Outlet	2158	20
Waterless Urinal Off-Floor, Wall Outlet	2159	20
Blowout Jet Urinal - Off-Floor	2160	21
Washout Urinal - Off-Floor	2162	21
Straddle Blowout Jet Urinal - Off-Floor	2165	22
Straddle Washout Urinal - Off-Floor	2167	22
Multi-Person Washout Urinal - Off-Floor	2173 - 2178	23
Stall Washout Urinal - On-Floor	2180	24
Dura-Ware Accessories		
Top Supply Flush Valve Cover	2802	25
Recessed Wall Box with Flush Valve	2803-1	25
Flush Valve Access Panel	2898	25
MERIDIAN		
Toilets		
Blowout Jet (Top Supply) Toilet	2140-T-	26
Blowout Jet (Wall Supply) Toilet	2140-W-	26
Siphon Jet (Top Supply) Toilet	2141-T-	27
Siphon Jet (Wall Supply) Toilet	2141-W-	27

Continued >>



ACORN ENGINEERING COMPANY

LIST PRICE GUIDE

TABLE OF CONTENTS

L1P00021DM22A

REPLACE-WARE	MODEL NUMBERS	
<i>Lavatory-Toilet Combys</i>		
15" Wide Comby	3315	28 - 29
18" Wide Comby	3318	30 - 31
<i>Lavatories</i>		
15" Wide Compact Lavatory with Multi-Sided Bowl	3325	32
18" Wide Multi-Sided Lavatory with Oval Bowl	3326	33
<i>Toilets</i>		
Blowout Jet Toilet - Off-Floor, Wall Waste, Rear Mount	3330	34
Blowout Jet Toilet - Off-Floor, Wall Waste, Front Mount	3331	34
Siphon Jet Toilet - Off-Floor, Wall Waste, Rear Mount	3332	35
Siphon Jet Toilet - Off-Floor, Wall Waste, Front Mount	3333	35
Blowout Jet Toilet - On-Floor, Wall Waste, Rear Mount	3334	36
Blowout Jet Toilet - On-Floor, Wall Waste, Front Mount	3335	36
Siphon Jet Toilet - On-Floor, Floor Waste, Rear Mount	3336	37
Siphon Jet Toilet - On-Floor, Floor Waste, Front Mount	3337	37
<i>Urinals</i>		
High Efficient Urinal	3346	38
Straddle Blowout Jet Urinal - Off-Floor	3349	38
<i>Wash-Ware Retro-Fit Assemblies</i>		
Stainless Steel Washfountain Retro-Fit Assembly - from Foot Operation	3350	39
Stainless Steel Washfountain Retro-Fit Assembly - from Hand Operation	3351	40
Terrazzo Three-Station Washfountain Retro-Fit Assembly	3363	41
Terrazzo Four-Station Washfountain Retro-Fit Assembly	3364	41
<i>Other Retro-Fit Assemblies</i>		
Single-Temp Air Control Valve	3382	42
Hot/Cold Air Control Valve	3383	42
Single-Temp Retro-Fit Valve	3386	42
Hot/Cold Retro-Fit Valve	3387	42
Anchor Assembly	3395	43
<i>Stainless Steel Replacement for Vitreous China Toilets</i>		
Off-Floor, Wall Waste, Blowout Jet Toilet	R2100	43
Off-Floor, Wall Waste, Siphon Jet Toilet	R2105	43
On-Floor, Wall Waste, Siphon Jet Toilet	R2115	43
On-Floor, Floor Waste, Siphon Jet Toilet	R2141-3	43



ACORN ENGINEERING COMPANY

LIST PRICE GUIDE

MEMBER OF MORRIS GROUP INTERNATIONAL

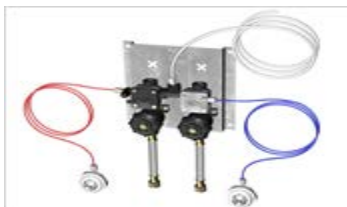
TF 800-488-8999 :: PH 626-336-4561 :: info@acorneng.com

L1P00021DM22A

Prices in US\$ Effective November 1, 2022

AIR CONTROL VALVES

03/04 Air Control Valve Assembly



Price Includes: Valve assembly on mounting plate with pushbuttons and lengths of 10' tubing as required. Intended for installation on units with existing 7/8" "D" punching ONLY.

****Additional options available with additional cost**

-04-MH(PICTURED)

MODELS			PRICE
- 03	Single-Temp Non-Metering Air Control Valve	per valve	\$454
- 03-MA2	Single-Temp Non-Metering Air Control Manifold to service (2) units	per valve	\$874
- 03-MA3	Single-Temp Non-Metering Air Control Manifold to service (3) units	per valve	\$1,267
- 03-MA4	Single-Temp Non-Metering Air Control Manifold to service (4) units	per valve	\$1,626
- 04	Hot & Cold Non-Metering Air Control Valve	per valve	\$780
- 04-MA2	Hot & Cold Non-Metering Air Control Manifold to service (2) units	per valve	\$1,499
- 04-MA3	Hot & Cold Non-Metering Air Control Manifold to service (3) units	per valve	\$2,161
- 04-MA4	Hot & Cold Non-Metering Air Control Manifold to service (4) units	per valve	\$2,764

OPTIONS			
- BC	Bubbler, Code	each	\$118
- BP	Bubbler, Penal	each	\$118
- BPH	Hemispherical Penal Bubbler	each	\$128
- BRS	Brass Valve Bodey	per btn	\$136
- LF	Lav-Filler	each	\$118
- M	Metering Air Control Valve	per unit	N/C
- MH	Metering Air Control Valve, Hot Side Only	per unit	N/C
- PBH	Hemispherical Pushbutton -03____ -04____	per btn	\$32
- PBP	Pushrod Activated Pushbutton	per btn	\$131

AVAILABILITY LEGEND =====

[IN] = In Stock; [PS] = Partial in Stock; [BO] = Built to Order

[RE] = Requires Engineering; [MOD] = Modified with Engineering

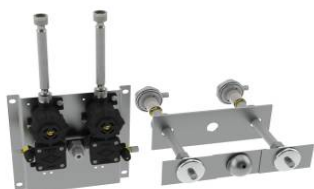


ACORN ENGINEERING COMPANY

LIST PRICE GUIDE

MEMBER OF MORRIS GROUP INTERNATIONAL

TF 800-488-8999 :: PH 626-336-4561 :: info@acorneng.com



Price Includes: Valve assembly on mounting plate, Hemispherical Bubbler with Plate, pushrod activated pushbuttons and lengths of 10' tubing as required. Intended for installation on existing units with punching to be determined (Refer to submittal)

****Additional options available with additional cost**

-R04-M (PICTURED)

MODELS

- R03	Single-Temp Non-Metering Air Control Valve	per valve	\$727
- R03-MA2	Single-Temp Non-Metering Air Control Manifold to service (2) units	per valve	\$1,439
- R03-MA3	Single-Temp Non-Metering Air Control Manifold to service (3) units	per valve	\$2,152
- R03-MA4	Single-Temp Non-Metering Air Control Manifold to service (4) units	per valve	\$2,863
- R04	Hot & Cold Non-Metering Air Control Valve	per valve	\$1,187
- R04-MA2	Hot & Cold Non-Metering Air Control Manifold to service (2) units	per valve	\$2,343
- R04-MA3	Hot & Cold Non-Metering Air Control Manifold to service (3) units	per valve	\$3,500
- R04-MA4	Hot & Cold Non-Metering Air Control Manifold to service (4) units	per valve	\$4,622

OPTIONS

-LBPH	Less Hemispherical Penal Bubbler	Deduct per unit	-\$117
-LPBP	Less Pushrod Activated Pushbuttons	Deduct per btn	-\$32
- M	Metering Air Control Valve	per unit	N/C
- MH	Metering Air Control Valve, Hot Side Only	per unit	N/C
- PBH	Hemispherical Pushbutton -03___ -04___	per btn	\$32

AVAILABILITY LEGEND =====

[IN] = In Stock; [PS] = Partial in Stock; [BO] = Built to Order

[RE] = Requires Engineering; [MOD] = Modified with Engineering



ACORN ENGINEERING COMPANY

LIST PRICE GUIDE

MEMBER OF MORRIS GROUP INTERNATIONAL

TF 800-488-8999 :: PH 626-336-4561 :: info@acorneng.com

L1P00021DM22A

Prices in US\$ Effective November 1, 2022

DURA-WARE 1900 Series

15" Self Rimming Classroom Sink



Price Includes: 16 gage 304 Stainless Steel Rectangular Self Rimming 15" x 25" Sink with 14" x 12" x 6" deep integral bowl

****Additional options available below with additional cost**

1900-CPF1-DMBCPF (PICTURED)

MODELS	WT	FT	PRICE
(BO) 1900	15" X 25" Classroom Sink	92.5	\$608

OPTIONS

- 9	Punched for Valve by Others (Specify Punch)	per unit	N/C
- CPF1	Single-Temp Pantry Faucet with Wrist Blade Handle	per unit	\$407
- CPF2	Hot and Cold Pantr Faucet with Wrist Blade Handles	per unit	\$392
- DMBCLC	Deck Mounted Bubbler with Lever Handle and Chrome Plated Mouth Gua	per unit	\$462
- DMBCLF	Deck Mounted Bubbler with Lever Handle and Flexible Mouth Guard	per unit	\$462
- DMBCPC	Deck Mounted Bubbler with Push Button and Chrome Plated Mouth Guar	per unit	\$406
- DMBCPF	Deck Mounted Bubbler with Push Button and Flexible Mouth Guard	per unit	\$406
- GE	Grid Strainer with Close Elbow	per unit	\$116
- GT	Grid Strainer with Tailpiece	per unit	\$86
- H1	Single Hole Centered Punch for Valve by Others	per unit	N/C
- H24	Two Holes 4" Center Punching for Valve by Others	per unit	N/C
- H28	Two Holes 8" Center Punching for Valve by Others	per unit	N/C
- H34	Three Holes 4" Center Punch for Valve by Others	per unit	N/C
- H38	Three Holes 8" Center Punching for Valve by Others	per unit	N/C



Price Includes: 16 gage 304 Stainless Steel Rectangular Self Rimming 17" x 25" Sink with 14" x 16" x 6" deep integral bowl

****Additional options available below with additional cost**

1901-CPF1-DMBCPF
(PICTURED)

MODELS	WT	FT	PRICE
(BO) 1901	17" X 25" Classroom Sink	92.5	\$728

OPTIONS

- 9	Punched for Valve by Others (Specify Punch)	per unit	N/C
- CPF1	Single-Temp Pantry Faucet with Wrist Blade Handle	per unit	\$407
- CPF2	Hot and Cold Pantr Faucet with Wrist Blade Handles	per unit	\$687
- DMBCLC	Deck Mounted Bubbler with Lever Handle and Chrome Plated Mouth Gua	per unit	\$462
- DMBCLF	Deck Mounted Bubbler with Lever Handle and Flexible Mouth Guard	per unit	\$462
- DMBCPC	Deck Mounted Bubbler with Push Button and Chrome Plated Mouth Guar	per unit	\$406
- DMBCPF	Deck Mounted Bubbler with Push Button and Flexible Mouth Guard	per unit	\$406
- GE	Grid Strainer with Close Elbow	per unit	\$116
- GT	Grid Strainer with Tailpiece	per unit	\$86
- H1	Single Hole Centered Punch for Valve by Others	per unit	N/C
- H24	Two Holes 4" Center Punching for Valve by Others	per unit	N/C
- H28	Two Holes 8" Center Punching for Valve by Others	per unit	N/C
- H34	Three Holes 4" Center Punch for Valve by Others	per unit	N/C
- H38	Three Holes 8" Center Punching for Valve by Others	per unit	N/C



Price Includes: 16 gage 304 Stainless Steel Rectangular Lavy, 18" wide x 15" Deep with 14-1/2" x 9-1/2" x 6" integral bowl, 3" integral backsplash and three holes (1-5/16" Dia.) punched on 4" center to accommodate valve by others.

****Additional options available below with additional cost**

MODELS		WT	FT	PRICE
(IN) 1950-1	18"x 15" Rect. Lavy	25#	92.5	\$938
OPTIONS				PRICE
- 03	Single-temp Air Control Valve		per unit	\$452
- 04	Hot & Cold Air Control Valve		per unit	\$779
- 9	Punched for Valve by Others (Specify Punch if other than below offered)		per unit	N/C
- 316	316 Stainless Steel in lieu of Standard 304		per unit	POA
- AB	Angle Braces		per unit	\$192
- BRS	Brass Valve Body		per btn	\$123
- CI	Cycle Interrupt for Time-trol Valve		per unit	\$16
- CSG	Centerset with Gooseneck Spout and Wrist Blade Handles		each	\$360
- CSS	Centerset with Spout		each	\$133
- DMS	Deck Mounted Spout		per unit	\$210
- EE	Elbow Enclosure		per unit	\$116
- EG	Enviro-Glaze Color, Specify: _____		per unit	\$74
- FG	14 Gage Housing		per unit	N/C
- GE	Grid Strainer w/Close Elbow 1-1/4"		per unit	\$116
- GT	Grid Strainer w/Tailpiece 1-1/4"		per unit	\$86
- H1	Single Hole Centered Punch for Valve by Others		per unit	N/C
- H24	Two Holes 4" Center Punching for Valve by Others		per unit	N/C
- H28	Two Holes 8" Center Punching for Valve by Others		per unit	N/C
- H34	Three Holes 4" Center Punch for Valve by Others (Standard)		per unit	N/C
- H38	Three Holes 8" Center Punching for Valve by Others		per unit	N/C
- IS	Integral Shelf		per unit	\$187
- M	Metering option for Air Control Valve to be 5-60 second cycle		per unit	N/C
- MH	Metering Hot Side Only option for Air Control Valve to be 5-60 second cycle		per unit	N/C
- MVC1	Time-trol Electronic Valve System Single-temp		per unit	\$595
- MVC2	Time-trol Electronic Valve System Hot & Cold		per unit	\$1,132
- OF	Lavatory Overflow		per unit	\$61
- TE	Trap Enclosure		per unit	\$254
- TF	Transformer (for up to 12 solenoids)		each	\$112
- TPT	Tubular P-Trap 1-1/4" x 1-1/2"		per unit	\$89



Price Includes: 16 gage 304 Stainless Steel Rectangular Lavy, 20" wide x 15" Deep with 14-1/2" x 9-1/2" x 6" integral bowl, 3" integral backsplash, sleeves to accommodate carrier by others and three holes (1-5/16" Dia.) punched on 4" center to accommodate valve by others.

****Additional options available below with additional cost**

MODELS		WT	FT	PRICE
(BO) 1950LC-1	20" x 15" Lavy	25#	92.5	\$1,075

OPTIONS			PRICE
- 03	Single-temp Air Control Valve	per unit	\$452
- 04	Hot & Cold Air Control Valve	per unit	\$779
- 9	Punched for Valve by Others (Specify Punch)	per unit	N/C
- 316	316 Stainless Steel in lieu of Standard 304	per unit	POA
- BRS	Brass Valve Body	per btn	\$123
- CI	Cycle Interrupt for Time-trol Valve	per unit	\$16
- CSG	Centerset with Gooseneck Spout and Wrist Blade Handles	each	\$360
- CSS	Centerset with Spout	each	\$133
- DMS	Deck Mounted Spout	per unit	\$210
- EE	Elbow Enclosure	per unit	\$116
- EG	Enviro-Glaze Color, Specify: _____	per unit	\$74
- FG	14 Gage Housing	per unit	N/C
- GE	Grid Strainer w/Close Elbow 1-1/4"	per unit	\$116
- GT	Grid Strainer w/Tailpiece 1-1/4"	per unit	\$86
- H1	Single Hole Centered Punch for Valve by Others	per unit	N/C
- H24	Two Holes 4" Center Punching for Valve by Others	per unit	N/C
- H28	Two Holes 8" Center Punching for Valve by Others	per unit	N/C
- H34	Three Holes 4" Center Punch for Valve by Others (Standard)	per unit	N/C
- H38	Three Holes 8" Center Punching for Valve by Others	per unit	N/C
- IS	Integral Shelf	per unit	\$187
- M	Metering option for Air Control Valve to be 5-60 second cycle	per unit	N/C
- MH	Metering Hot Side Only option for Air Control Valve to be 5-60 second cycle	per unit	N/C
- MVC1	Time-trol Electronic Valve System Single-temp	per unit	\$595
- MVC2	Time-trol Electronic Valve System Hot & Cold	per unit	\$1,132
- OF	Lavatory Overflow	per unit	\$61
- TE	Trap Enclosure	per unit	\$254
- TF	Transformer (for up to 12 solenoids)	each	\$112
- TPT	Tubular P-Trap 1-1/4" x 1-1/2"	per unit	\$89



Price Includes: 16 gage 304 Stainless Steel Rectangular Lavy, 18" wide x 18" Deep with 14-1/2" x 12" x 6" integral bowl, 3" integral backsplash and three holes (1-5/16" Dia.) punched on 4" center to accommodate valve by others.

****Additional options available below with additional cost**

1951-1-DMS-04 & 1951-1-CSG-GT-TPT (PICTURED)

MODELS		WT	FT	PRICE
(BO) 1951-1	Std.18" x 18"	25#	92.5	\$958

OPTIONS			PRICE
- 03	Single-temp Air Control Valve	per unit	\$452
- 04	Hot & Cold Air Control Valve	per unit	\$779
- 9	Punched for Valve by Others (Specify Punch if other than below offered)	per unit	N/C
- 316	316 Stainless Steel in lieu of Standard 304	per unit	POA
- AB	Angle Braces	per unit	\$192
- BRS	Brass Valve Body	per btn	\$123
- CI	Cycle Interrupt for Time-trol Valve	per unit	\$16
- CSG	Centerset with Gooseneck Spout and Wrist Blade Handles	each	\$360
- CSS	Centerset with Spout	each	\$133
- DMS	Deck Mounted Spout	per unit	\$210
- EE	Elbow Enclosure	per unit	\$116
- EG	Enviro-Glaze Color, Specify: _____	per unit	\$74
- FG	14 Gage Housing	per unit	N/C
- GE	Grid Strainer w/Close Elbow 1-1/4"	per unit	\$116
- GT	Grid Strainer w/Tailpiece 1-1/4"	per unit	\$86
- H1	Single Hole Centered Punch for Valve by Others	per unit	N/C
- H24	Two Holes 4" Center Punching for Valve by Others	per unit	N/C
- H28	Two Holes 8" Center Punching for Valve by Others	per unit	N/C
- H34	Three Holes 4" Center Punch for Valve by Others (Standard)	per unit	N/C
- H38	Three Holes 8" Center Punching for Valve by Others	per unit	N/C
- IS	Integral Shelf	per unit	\$187
- M	Metering option for Air Control Valve to be 5-60 second cycle	per unit	N/C
- MH	Metering Hot Side Only option for Air Control Valve to be 5-60 second cyc	per unit	N/C
- MVC1	Time-trol Electronic Valve System Single-temp	per unit	\$595
- MVC2	Time-trol Electronic Valve System Hot & Cold	per unit	\$1,132
- OF	Lavatory Overflow	per unit	\$61
- TE	Trap Enclosure	per unit	\$254
- TF	Transformer (for up to 12 solenoids)	each	\$112
- TPT	Tubular P-Trap 1-1/4" x 1-1/2"	per unit	\$89



Price Includes: 16 gage 304 Stainless Steel Rectangular Lavy, 20" wide x 18" Deep with 14-1/2" x 12" x 6" integral bowl, 3" integral backsplash, sleeves to accommodate carrier by others and three holes (1-5/16" Dia.) punched on 4" center to accommodate valve by others.

****Additional options available below with additional cost**

MODELS		WT	FT	PRICE	
(BO)	1951LC-1	20" x 18" Lavy	25#	92.5	\$1,096
OPTIONS					PRICE
- 03	Single-temp Air Control Valve		per unit	\$452	
- 04	Hot & Cold Air Control Valve		per unit	\$779	
- 9	Punched for Valve by Others (Specify Punch)		per unit	N/C	
- 316	316 Stainless Steel in lieu of Standard 304		per unit	POA	
- BRS	Brass Valve Body		per btn	\$123	
- CI	Cycle Interrupt for Time-trol Valve		per unit	\$16	
- CSG	Centerset with Gooseneck Spout and Wrist Blade Handles		each	\$360	
- CSS	Centerset with Spout		each	\$133	
- DMS	Deck Mounted Spout		per unit	\$210	
- EE	Elbow Enclosure		per unit	\$116	
- EG	Enviro-Glaze Color, Specify:_____		per unit	\$74	
- FG	14 Gage Housing		per unit	N/C	
- GE	Grid Strainer w/Close Elbow 1-1/4"		per unit	\$116	
- GT	Grid Strainer w/Tailpiece 1-1/4"		per unit	\$86	
- H1	Single Hole Centered Punch for Valve by Others		per unit	N/C	
- H24	Two Holes 4" Center Punching for Valve by Others		per unit	N/C	
- H28	Two Holes 8" Center Punching for Valve by Others		per unit	N/C	
- H34	Three Holes 4" Center Punch for Valve by Others (Standard)		per unit	N/C	
- H38	Three Holes 8" Center Punching for Valve by Others		per unit	N/C	
- IS	Integral Shelf		per unit	\$187	
- M	Metering option for Air Control Valve to be 5-60 second cycle		per unit	N/C	
- MH	Metering Hot Side Only option for Air Control Valve to be 5-60 second cycle		per unit	N/C	
- MVC1	Time-trol Electronic Valve System Single-temp		per unit	\$595	
- MVC2	Time-trol Electronic Valve System Hot & Cold		per unit	\$1,132	
- OF	Lavatory Overflow		per unit	\$61	
- TE	Trap Enclosure		per unit	\$254	
- TF	Transformer (for up to 12 solenoids)		each	\$112	
- TPT	Tubular P-Trap 1-1/4" x 1-1/2"		per unit	\$89	



Price Includes: 16 gage 304 Stainless Steel Rectangular Lavy, 18" wide x 22" Deep with 14-1/2" x 12" x 5" integral bowl, 3" integral backsplash, angle braces and three holes (1-5/16" Dia.) punched on 4" center to accommodate valve by others.

****Additional options available below with additional cost**

1953-1-DMS-04-GT-TPT & 1951-1-CSG (PICTURED)

MODELS		WT	FT	PRICE
(IN) 1953-1	18" x 22" Lavy	35#	92.5	\$1,102
OPTIONS				PRICE
- 03	Single-temp Air Control Valve		per unit	\$452
- 04	Hot & Cold Air Control Valve		per unit	\$779
- 9	Punched for Valve by Others (Specify Punch if other than below offered)		per unit	N/C
- 316	316 Stainless Steel in lieu of Standard 304		per unit	POA
- BRS	Brass Valve Body		per btn	\$123
- CI	Cycle Interrupt for Time-trol Valve		per unit	\$16
- CSG	Centerset with Gooseneck Spout and Wrist Blade Handles		each	\$360
- DMS	Deck Mounted Spout		per unit	\$210
- EE	Elbow Enclosure		per unit	\$116
- EG	Enviro-Glaze Color, Specify: _____		per unit	\$74
- FG	14 Gage Housing		per unit	N/C
- GE	Grid Strainer w/Close Elbow 1-1/4"		per unit	\$116
- GT	Grid Strainer w/Tailpiece 1-1/4"		per unit	\$86
- H1	Single Hole Centered Punch for Valve by Others		per unit	N/C
- H24	Two Holes 4" Center Punching for Valve by Others		per unit	N/C
- H28	Two Holes 8" Center Punching for Valve by Others		per unit	N/C
- H34	Three Holes 4" Center Punch for Valve by Others (Standard)		per unit	N/C
- H38	Three Holes 8" Center Punching for Valve by Others		per unit	N/C
- IS	Integral Shelf		per unit	\$187
- M	Metering option for Air Control Valve to be 5-60 second cycle		per unit	N/C
- MH	Metering Hot Side Only option for Air Control Valve to be 5-60 second cyc		per unit	N/C
- MVC1	Time-trol Electronic Valve System Single-temp		per unit	\$595
- MVC2	Time-trol Electronic Valve System Hot & Cold		per unit	\$1,132
- OF	Lavatory Overflow		per unit	\$61
- TE	Trap Enclosure		per unit	\$254
- TF	Transformer (for up to 12 solenoids)		each	\$112
- TPT	Tubular P-Trap 1-1/4" x 1-1/2"		per unit	\$89



Price Includes: 16 gage 304 Stainless Steel Rectangular Lavy, 20" wide x 22" Deep with 14-1/2" x 12" x 5" integral bowl, 3" integral backsplash, sleeves for carrier by others and three holes (1-5/16" Dia.) punched on 4" center to accommodate valve by others.

****Additional options available below with additional cost**

MODELS		WT	FT	PRICE	
(BO)	1953LC-1	20" X 22" Lavy	35#	92.5	\$1,239
OPTIONS					PRICE
- 03	Single-temp Air Control Valve		per unit	\$452	
- 04	Hot & Cold Air Control Valve		per unit	\$779	
- 9	Punched for Valve by Others (Specify Punch if other than below offered)		per unit	N/C	
- 316	316 Stainless Steel in lieu of Standard 304		per unit	POA	
- BRS	Brass Valve Body		per btn	\$123	
- CI	Cycle Interrupt for Time-trol Valve		per unit	\$16	
- CSG	Centerset with Gooseneck Spout and Wrist Blade Handles		each	\$360	
- DMS	Deck Mounted Spout		per unit	\$210	
- EE	Elbow Enclosure		per unit	\$116	
- EG	Enviro-Glaze Color, Specify:_____		per unit	\$74	
- FG	14 Gage Housing		per unit	N/C	
- GE	Grid Strainer w/Close Elbow 1-1/4"		per unit	\$116	
- GT	Grid Strainer w/Tailpiece 1-1/4"		per unit	\$86	
- H1	Single Hole Centered Punch for Valve by Others		per unit	N/C	
- H24	Two Holes 4" Center Punching for Valve by Others		per unit	N/C	
- H28	Two Holes 8" Center Punching for Valve by Others		per unit	N/C	
- H34	Three Holes 4" Center Punch for Valve by Others (Standard)		per unit	N/C	
- H38	Three Holes 8" Center Punching for Valve by Others		per unit	N/C	
- IS	Integral Shelf		per unit	\$187	
- M	Metering option for Air Control Valve to be 5-60 second cycle		per unit	N/C	
- MH	Metering Hot Side Only option for Air Control Valve to be 5-60 second cycle		per unit	N/C	
- MVC1	Time-trol Electronic Valve System Single-temp		per unit	\$595	
- MVC2	Time-trol Electronic Valve System Hot & Cold		per unit	\$1,132	
- OF	Lavatory Overflow		per unit	\$61	
- TE	Trap Enclosure		per unit	\$254	
- TF	Transformer (for up to 12 solenoids)		each	\$112	
- TPT	Tubular P-Trap 1-1/4" x 1-1/2"		per unit	\$89	



Price Includes: 18 gage 304 Stainless Steel Econo Trapezoidal Lavy, 19-3/4" wide x 15-3/4" deep with 16" x 12" x 5" integral bowl, three holes (1-5/16" Dia.) punched on 4" center to accommodate valve by others, and angle braces.

****Additional options available below with additional cost**

1955-1-CSG-GT-TPT (PICTURED)

MODELS		WT	FT	PRICE
(BO) 1955-1	19-3/4" x 15-3/4" Lavy	25#	92.5	\$630
OPTIONS				PRICE
- 9	Punched for Valve by Others (Specify Punch if other than below offered)	per unit		N/C
- CSG	Centerset with Gooseneck Spout and Wrist Blade Handles	each		\$327
- CSS	Centerset with Spout	each		\$121
- EG	Enviro-Glaze Color, Specify: _____	per unit		\$67
- GE	Grid Strainer w/Close Elbow 1-1/4"	per unit		\$105
- GT	Grid Strainer w/Tailpiece 1-1/4"	per unit		\$78
- H1	Single Hole Centered Punch for Valve by Others	per unit		N/C
- H24	Two Holes 4" Center Punching for Valve by Others	per unit		N/C
- H28	Two Holes 8" Center Punching for Valve by Others	per unit		N/C
- H34	Three Holes 4" Center Punch for Valve by Others (Standard)	per unit		N/C
- H38	Three Holes 8" Center Punching for Valve by Others	per unit		N/C
- TPT	Tubular P-Trap 1-1/4" x 1-1/2"	per unit		\$80



Price Includes: 16 gage 304 Stainless Steel Drinking Fountain 18" wide x 12" deep with 4" integral backsplash and enclosed bottom.

****Additional options available below with additional cost**

2010-1-BC-03-GT-TPT (PICTURED)

MODELS		WT	FT	PRICE
(BO) 2010-1	18" Drinking Fountain	25#	85	\$1,128
OPTIONS				PRICE
- 03	Single-temp Air Control Valve		per unit	\$452
- 316	316 Stainless Steel in lieu of Standard 304		per unit	POA
- AB	Angle Braces (Available only when -GE is specified)		per unit	\$192
- BC	Bubbler, Code Style with Mouth guard		per unit	\$119
- BP	Bubbler, Penal Style		per unit	\$119
- BRS	Brass Valve Body		per btn	\$123
- EG	Enviro-Glaze Color, Specify: _____		per unit	\$74
- FG	14 gage Housing		per unit	N/C
- FP	Freeze Resistant Box		per unit	\$702
- GE	Grid Strainer w/Plain End Elbow Waste 1-1/4"		per unit	\$116
- GT	Grid Strainer w/Tailpiece 1-1/4"		per unit	\$86
- MVC1	Time-trol Electronic Valve System Single-temp		per unit	\$595
- TF	Transformer (for up to 12 solenoids)		each	\$112
- TPT	Tubular P-Trap 1-1/4" x 1-1/2"		per unit	\$89



Price Includes: 16 gage 304 Stainless Steel Drinking Fountain 15" wide x 18" deep with 4" integral backsplash and enclosed bottom.

****Additional options available below with additional cost**

2012-1-BC-03-GE (PICTURED)

MODELS		WT	FT	PRICE	
(BO)	2012-1	15" Drinking Fountain	25	85	\$1,166

OPTIONS				PRICE
- 03	Single-temp Air Control Valve		per unit	\$452
- 316	316 Stainless Steel in lieu of Standard 304		per unit	POA
- AB	Angle Braces (Available only when -GE is specified)		per unit	\$192
- BC	Bubbler, Code Style with Mouth guard		per unit	\$119
- BP	Bubbler, Penal Style		per unit	\$119
- BPH	Deck Mounted Hemispherical Bubbler		per unit	\$116
- BRS	Brass Valve Body		per btn	\$123
- EG	Enviro-Glaze Color, Specify: _____		per unit	\$74
- FG	14 gage Housing		per unit	N/C
- FP	Freeze Resistant Box		per unit	\$702
- GE	Grid Strainer w/Plain End Elbow Waste 1-1/4"		per unit	\$116
- GT	Grid Strainer w/Tailpiece 1-1/4"		per unit	\$86
- MVC1	Time-trol Electronic Valve System Single-temp		per unit	\$595
- TF	Transformer (for up to 12 solenoids)		each	\$112
- TPT	Tubular P-Trap 1-1/4" x 1-1/2"		per unit	\$89



Price Includes: 16 gage 304 Stainless Steel Multi-Station ADA compliant Drinking Fountain, 2020-1, 2-Station is 30" wide x 17" deep & 2030-1, 3-Station is 50" wide x 18-1/4" deep with 2" integral backsplash and enclosed bottom.

****Additional options available below with additional cost**

2030-1-BC-03-GE (PICTURED)

MODELS		WT	FT	PRICE	
(BO)	2020-1	2-Station (30" Long)	65#	85	\$1,630
(BO)	2030-1	3- Station (50" Long)	35#	85	\$2,688

OPTIONS				PRICE
- 03	Single-temp Air Control Valve		per stn	\$452
- 316	316 Stainless Steel in lieu of Standard 304		per unit	POA
- AB	Angle Braces (Available only when -GE is specified)		per unit	\$192
- BC	Bubbler, Code Style with Mouth guard		per stn	\$119
- BP	Bubbler, Penal Style		per stn	\$119
- BRS	Brass Valve Body		per btn	\$136
- EG	Enviro-Glaze Color, Specify: _____		per unit	\$74
- FG	14 gage Housing		per unit	N/C
- FP	Freeze Resistant Box		per unit	\$702
- GE	Grid Strainer w/Plain End Elbow Waste 1-1/4"		per unit	\$116
- GT	Grid Strainer w/Tailpiece 1-1/4"		per unit	\$86
- MVC1	Time-trol Electronic Valve System Single-temp		per stn	\$595
- TF	Transformer (for up to 12 solenoids)		each	\$112
- TPT	Tubular P-Trap 1-1/4" x 1-1/2"		per unit	\$89



Price Includes: 16 gage 304 Stainless Steel Off-Floor, Wall Outlet Blowout Jet Toilet with standard 2-3/8" gasketed waste outlet

****Additional options available below with additional cost**

****ADA Compliant when mounted per recommended heights and provided with Hydraulic Flush Valves**

2100-W-1-CN (PICTURED)

MODELS		WT	FT	PRICE	
(IN)	2100-T-1	Top Supply (Exposed)	35#	92.5	\$1,909
(IN)	2100-W-1	Wall Supply (Concealed)	35#	92.5	\$1,909

	OPTIONS	PRICE
- 3395	Anchoring Assembly (See Submittal Sheet in Replace-ware)	each \$213
- 316	316 Stainless Steel in lieu of 304	per unit POA
- BCN	Blind Cap Nuts	per unit \$91
- BL	Bedpan Lugs	per unit \$116
- CN	Cap Nuts (3) per unit	per unit \$89
- EG	Enviro-Glaze, Exterior Only (DOES NOT INCLUDE INTERIOR OF TOILET)	per unit \$74
- FG	14 gage Unit	per unit N/C
- FT	Flood-trol Manual Reset N/A with Top Supply Units	per unit \$541
- FTA	Flood-trol Auto-reset N/A with Top Supply Units	per unit \$727
- FV	Flush Valve (Mechanical) N/A with ADA Units	each \$445
- FVC	Flush Valve Cover w/Mech. FV for Top Supply Units N/A with ADA	per unit \$1,124
- FVCH	Flush Valve Cover w/Hydraulic FV for Top Supply Units	per unit \$1,286
- FVH	Flush Valve (Hydraulic)	each \$679
- FVL	Flush Valve for Top Supply with Lever Handle ADA Compliant	per unit \$364
- FVT	Flush Valve thru Wall Connection for Wall Supply	per unit \$65
- HET	High Efficiency Toilet	per unit \$184
- HPS	High Polish Seat with #7 Finish	per unit \$27
- HS-OFLC	Hinged Seat Open Front Less Cover	per unit \$194
- HS-OFWC	Hinged Seat Open Front with Cover	per unit \$194
- MVCFV	Time-trol Electronic Flush Valve N/A with Top Supply	per unit \$1,099
- PE	Plain End Toilet Waste 2-3/8" in lieu of standard Gasketed	per unit N/C
- PFS	Punched for Hinged Seat by Others	per unit N/C
- PH	Paper Holder Integral for Flush Valve Cover Option Only (-FVC)	per unit \$97
- TF	Transformer for Time-trol (for up to 12 solenoids)	per unit \$112
- TSC	Toilet Shipping Cover	per unit \$35
- VAC	Acorn-Vac System	per unit POA
- WO3	Waste Outlet 3" P-Trap N/A with 1.6 GPF	per unit \$264



Price Includes: 16 gage 304 Stainless Steel Off-Floor, Wall Outlet siphon Jet Toilet with standard 2-3/8" gasketed waste outlet.

****Additional options available below with additional cost**

****ADA compliant when mounted per recommended heights and provided with hydraulic flush valves**

2105-W-1-CN (PICTURED)

MODELS		WT	FT	PRICE	
(IN)	2105-T-1	Top Supply (Exposed)	45#	92.5	\$2,380
(IN)	2105-W-1	Wall Supply (Concealed)	45#	92.5	\$2,380

	OPTIONS	PRICE
- 316	316 Stainless Steel in lieu of 304	per unit POA
- BCN	Blind Cap Nuts	per unit \$91
- BL	Bedpan Lugs	per unit \$116
- CN	Cap Nuts (4) per unit	per unit \$117
- EG	Enviro-Glaze, Exterior Only (DOES NOT INCLUDE INTERIOR OF TOILET)	per unit \$74
- FG	14 gage Unit	per unit N/C
- FT	Flood-trol Manual Reset N/A with Top Supply Units	per unit \$541
- FTA	Flood-trol Auto-reset N/A with Top Supply Units	per unit \$727
- FV	Flush Valve (Mechanical) N/A with ADA Units	each \$445
- FVC	Flush Valve Cover w/Mech. for Top Supply Units N/A with ADA	per unit \$1,124
- FVCH	Flush Valve Cover w/Hydraulic FV for Top Supply Units	per unit \$1,286
- FVH	Flush Valve (Hydraulic)	each \$679
- FVL	Flush Valve for Top Supply with Lever Handle ADA Compliant	per unit \$364
- FVT	Flush Valve thru Wall Connection for Wall Supply	per unit \$65
- HET	High Efficiency Toilet	per unit \$184
- HPS	High Polish Seat with #7 Finish	per unit \$27
- HS-OFLC	Hinged Seat Open Front Less Cover	per unit \$194
- HSOFWC	Hinged Seat Open Front with Cover	per unit \$194
- MVCFV	Time-trol Electronic Flush Valve N/A with Top Supply	per unit \$1,099
- PE	Plain End Toilet Waste 2-3/8" in lieu of standard Gasketed	per unit N/C
- PFS	Punched for Hinged Seat by Others	per unit N/C
- PH	Paper Holder Integral for Flush Valve Cover Option Only (-FVC)	per unit \$97
- TF	Transformer for Time-trol (for up to 12 solenoids)	per unit \$112
- TSC	Toilet Shipping Cover	per unit \$35
- VAC	Acorn-Vac System	per unit POA
- WO3	Waste Outlet 3" P-Trap N/A with 1.6 GPF	per unit \$264



Price Includes: 16 gage 304 Stainless Steel Off-Floor, Wall Outlet siphon Jet Toilet with standard 2-3/8" gasketed waste outlet and reinforced housing to accommodate an optional mounting carrier with up to 1000 lb.load rating.

****Additional options available below with additional cost**

****ADA compliant when mounted per recommended heights and provided with correct Flush Valve**

2105BAR-W-1-CN (PICTURED)

	MODELS		WT	FT	PRICE
(IN)	2105BAR-T-1	Top Supply (Exposed)	45#	92.5	\$3,671
(IN)	2105BAR-W-1	Wall Supply (Concealed)	45#	92.5	\$3,671

	OPTIONS		PRICE
- 316	316 Stainless Steel in lieu of 304	per unit	POA
- BCN	Blind Cap Nuts	per unit	\$91
- BL	Bedpan Lugs	per unit	\$116
- CN	Cap Nuts (4) per unit	per unit	\$117
- EG	Enviro-Glaze, Exterior Only (DOES NOT INCLUDE INTERIOR OF TOILET)	per unit	\$74
- FT	Flood-trol Manual Reset N/A with Top Supply Units	per unit	\$541
- FTA	Flood-trol Auto-reset N/A with Top Supply Units	per unit	\$727
- FV	Flush Valve (Mechanical) N/A with ADA Units	each	\$445
- FVC	Flush Valve Cover w/Mech. FV for Top Supply Units N/A with ADA	per unit	\$1,124
- FVCH	Flush Valve Cover w/Hydraulic FV for Top Supply Units	per unit	\$1,286
- FVH	Flush Valve (Hydraulic)	each	\$679
- FVL	Flush Valve for Top Supply with Lever Handle ADA Compliant	per unit	\$364
- FVT	Flush Valve thru Wall Connection for Wall Supply	per unit	\$65
- HET	High Efficiency Toilet	per unit	\$184
- HPS	High Polish Seat with #7 Finish	per unit	\$27
- HSBJ	Big John Hinged Toilet Seat, Open Front Less Cover	per unit	\$330
	Big John Hinged Toilet Seat, open Front, With Cover	per unit	\$392
- MC	Mounting Carrier Bariatric with 1000 lb. Rating	per unit	POA
- MVCFV	Time-trol Electronic Flush Valve N/A with Top Supply	per unit	\$1,099
- PFS	Punched for Hinged Seat by Others	per unit	N/C
- PH	Paper Holder Integral for Flush Valve Cover Option Only (-FVC)	per unit	\$97
- TF	Transformer for Time-trol (for up to 12 solenoids)	per unit	\$112
- TSC	Toilet Shipping Cover	per unit	\$35
- VAC	Acorn-Vac System	per unit	POA
- WO3	Waste Outlet 3" P-Trap N/A with 1.6 GPF	per unit	\$264



Price Includes: 16 gage 304 Stainless Steel On-Floor, Wall Outlet Blowout Jet Toilet with standard 2-3/8" gasketed waste outlet

****Additional options available below with additional cost**

2110-W-2 (PICTURED)

	MODELS		WT	FT	PRICE
(BO)	2110-T-2	Top Supply (Exposed)	40#	92.5	\$2,475
(IN)	2110-W-2	Wall Supply (Concealed)	40#	92.5	\$2,475

	OPTIONS		PRICE
- 316	316 Stainless Steel in lieu of 304	per unit	POA
- ADA	18" Integral Seat Rim Height	per unit	\$86
- BCN	Blind Cap Nuts	per unit	\$91
- BL	Bedpan Lugs	per unit	\$116
- CN	Cap Nuts (2) per unit	per unit	\$59
- EG	Enviro-glaze, Exterior Only (DOES NOT INCLUDE INTERIOR OF TOILET)	per unit	\$74
- FG	14 gage Unit	per unit	N/C
- FT	Flood-trol Manual Reset N/A with Top Supply Units	per unit	\$541
- FTA	Flood-trol Auto-reset N/A with Top Supply Units	per unit	\$727
- FV	Flush Valve (Mechanical) N/A with ADA Units	each	\$445
- FVC	Flush Valve Cover w/Mech. FV for Top Supply Units N/A with ADA	per unit	\$1,124
- FVCH	Flush Valve Cover w/Hydraulic FV for Top Supply Units	per unit	\$1,286
- FVH	Flush Valve (Hydraulic)	each	\$679
- FVL	Flush Valve for Top Supply with Lever Handle ADA Compliant	per unit	\$364
- FVT	Flush Valve thru Wall Connection for Wall Supply	per unit	\$65
- HET	High Efficiency Toilet	per unit	\$184
- HPS	High Polish Seat with #7 Finish	per unit	\$27
- HS-OFLC	Hinged Seat Open Front Less Cover	per unit	\$194
- HS-OFWC	Hinged Seat Open Front with Cover	per unit	\$194
- MVCFV	Time-trol Electronic Flush Valve N/A with Top Supply	per unit	\$1,099
- PE	Plain End Toilet Waste 2-3/8" in lieu of standard Gasketed	per unit	N/C
- PFS	Punched for Hinged Seat by Others	per unit	N/C
- PH	Paper Holder Integral for Flush Valve Cover Option Only (-FVC)	per unit	\$97
- TF	Transformer for Time-trol (for up to 12 solenoids)	per unit	\$112
- TSC	Toilet Shipping Cover	per unit	\$35
- VAC	Acorn-Vac System	per unit	POA
- WO3	Waste Outlet 3" P-Trap N/A with 1.6 GPF	per unit	\$264



Price Includes: 16 gage 304 Stainless Steel On-Floor, Wall Outlet Siphon Jet Toilet with standard 2-3/8" gasketed waste outlet

****Additional options available below with additional cost**

2115-W-2 (PICTURED)

MODELS			WT	FT	PRICE
(BO)	2115-T-2	Top Supply (Exposed)	40#	92.5	\$2,475
(BO)	2115-W-2	Wall Supply (Concealed)	40#	92.5	\$2,475

	OPTIONS	PRICE
- 316	316 Stainless Steel in lieu of 304	per unit POA
- ADA	18" Integral Seat Rim Height	per unit \$86
- BCN	Blind Cap Nuts	per unit \$91
- BL	Bedpan Lugs	per unit \$116
- CN	Cap Nuts (4) per unit	per unit \$117
- EG	Enviro-Glaze, Exterior Only (DOES NOT INCLUDE INTERIOR OF TOILET)	per unit \$74
- FG	14 gage Unit	per unit N/C
- FT	Flood-trol Manual Reset N/A with Top Supply Units	per unit \$541
- FTA	Flood-trol Auto-reset N/A with Top Supply Units	per unit \$727
- FV	Flush Valve (Mechanical) N/A with ADA Units	each \$445
- FVC	Flush Valve Cover w/Mech. FV for Top Supply Units N/A with ADA	per unit \$1,124
- FVCH	Flush Valve Cover w/Hydraulic FV for Top Supply Units	per unit \$1,286
- FVH	Flush Valve (Hydraulic)	each \$679
- FVL	Flush Valve for Top Supply with Lever Handle ADA Compliant	per unit \$364
- FVT	Flush Valve thru Wall Connection for Wall Supply	per unit \$65
- HET	High Efficiency Toilet	per unit \$184
- HPS	High Polish Seat with #7 Finish	per unit \$27
- HS-OFLC	Hinged Seat Open Front Less Cover	per unit \$194
- HSOFWC	Hinged Seat Open Front with Cover	per unit \$194
- MVCFV	Time-trol Electronic Flush Valve N/A with Top Supply	per unit \$1,099
- PE	Plain End Toilet Waste 2-3/8" in lieu of standard Gasketed	per unit N/C
- PFS	Punched for Hinged Seat by Others	per unit N/C
- PH	Paper Holder Integral for Flush Valve Cover Option Only (-FVC)	per unit \$97
- TF	Transformer for Time-trol (for up to 12 solenoids)	per unit \$112
- TSC	Toilet Shipping Cover	per unit \$35
- VAC	Acorn-Vac System	per unit POA
- WO3	Waste Outlet 3" P-Trap N/A with 1.6 GPF	per unit \$264



Price Includes: 16 gage 304 Stainless Steel On-Floor, Floor Outlet Siphon Jet Toilet with standard 2-3/8" gasketed waste outlet

****Additional options available below with additional cost**

2120-W-3-CN (PICTURED)

	MODELS		WT	FT	PRICE
(BO)	2120-T-3	Top Supply (Exposed)	50#	92.5	\$2,518
(BO)	2120-W-3	Wall Supply (Concealed)	50#	92.5	\$2,518

	OPTIONS		PRICE
- 316	316 Stainless Steel in lieu of 304	per unit	POA
- ADA	18" Integral Seat Rim Height	per unit	\$86
- BCN	Blind Cap Nuts	per unit	\$91
- BL	Bedpan Lugs	per unit	\$116
- CN	Cap Nuts (2) per unit Floor hardware not included	per unit	\$59
- EG	Enviuro-glaze, Exterior Only (DOES NOT INCLUDE INTERIOR OF TOILET)	per unit	\$74
- FG	14 gage Unit	per unit	N/C
- FT	Flood-trol Manual Reset N/A with Top Supply Units	per unit	\$541
- FTA	Flood-trol Auto-reset N/A with Top Supply Units	per unit	\$727
- FV	Flush Valve (Mechanical) N/A with ADA Units	each	\$445
- FVC	Flush Valve Cover w/Mech. FV for Top Supply Units N/A with ADA	per unit	\$1,124
- FVCH	Flush Valve Cover w/Hydraulic FV for Top Supply Units	per unit	\$1,286
- FVH	Flush Valve (Hydraulic)	each	\$679
- FVL	Flush Valve for Top Supply with Lever Handle ADA Compliant	per unit	\$364
- FVT	Flush Valve thru Wall Connection for Wall Supply	per unit	\$65
- HET	High Efficiency Toilet	per unit	\$184
- HPS	High Polish Seat with #7 Finish	per unit	\$27
- HS-OFLC	Hinged Seat Open Front Less Cover	per unit	\$194
- HS-OFWC	Hinged Seat Open Front with Cover	per unit	\$194
- MVCFV	Time-trol Electronic Flush Valve N/A with Top Supply	per unit	\$1,099
- PE	Plain End Toilet Waste 2-3/8" in lieu of standard Gasketed	per unit	N/C
- PFS	Punched for Hinged Seat by Others	per unit	N/C
- PH	Paper Holder Integral for Flush Valve Cover Option Only (-FVC)	per unit	\$97
- TF	Transformer for Time-trol (for up to 12 solenoids)	per unit	\$112
- TSC	Toilet Shipping Cover	per unit	\$35
- VAC	Acorn-Vac System	per unit	POA
- WO3	Waste Outlet 3" P-Trap N/A with 1.6 GPF	per unit	\$264



Price Includes: 14 gage 304 Stainless Steel On-Floor, Wall or Floor Outlet with access panels, 2-3/8" waste and "NEW" contour design and ADA compliant.

****Additional options available below with additional cost**

2125A-W-2-EG-HS (PICTURED)

MODELS	WT	FT	PRICE
2125A-W/T-2	On-Floor, Wall Outlet	92.5	\$3,296
2125A-W/T-3	On-Floor, Floor Outlet	92.5	\$3,296

OPTIONS	PRICE
- 316 316 Stainless Steel in lieu of 304	per unit POA
- BL Bedpan Lugs	per unit \$116
- EG Enviro-glaze, Exterior Only (DOES NOT INCLUDE INTERIOR OF TOILET)	per unit \$74
- FM Front Mount Unit	per unit N/C
- FT Flood-trol Manual Reset N/A with Top Supply Units	per unit \$541
- FTA Flood-trol Auto-reset N/A with Top Supply Units	per unit \$727
- FV Flush Valve (Mechanical) N/A with ADA Units	each \$445
- FVC Flush Valve Cover w/Mech. FV for Top Supply Units N/A with ADA	per unit \$1,124
- FVCH Flush Valve Cover w/Hydraulic FV For Top Supply Units	per unit \$1,286
- FVH Flush Valve (Hydraulic)	each \$679
- FVL Flush Valve for Top Supply with Lever Handle ADA Compliant	per unit \$364
- FVT Flush Valve thru Wall Connection for Wall Supply	per unit \$65
- HET High Efficiency Toilet	per unit \$184
- HSBJ Big John Hinged Toilet Seat, Open Front Less Cover	each \$330
Big John Hinged Toilet Seat, Open Front With Cover	each \$392
- MVCFV Time-trol Electronic Flush Valve N/A with Top Supply	per unit \$1,099
- PE Plain End Toilet Waste 2-3/8" in lieu of standard Gasketed	per unit N/C
- PH Paper Holder Integral for Flush Valve Cover Option Only (-FVC)	per unit \$97
- RM Rear Mount Unit	per unit N/C
- TF Transformer for Time-trol (for up to 12 solenoids)	per unit \$112
- TSC Toilet Shipping Cover	per unit \$35
- VAC Acorn-Vac System	per unit POA
- WO3 Waste Outlet 3" P-Trap N/A with 1.6 GPF	per unit \$264



Price Includes: 18 gage 304 Stainless Steel Waterless Toilet Stool, 16-1/2" x 20-5/8" oval with 1" wide floor flange and 6" below-floor flange extension

****Additional options available below with additional cost**

2131 (PICTURED)

MODELS	WT	FT	PRICE
(IN) 2131	On-Floor, Floor Outlet Toilet	N/A 92.5	\$1,986

OPTIONS	PRICE
- EG Enviro-Glaze, Exterior Only (DOES NOT INCLUDE INTERIOR OF TOILET)	per unit \$74
- HSC Hinged Seat with Cover	per unit \$194



Price Includes: 18 gage fixture, 16 gage bowl type 304 Stainless Steel with contour surface to facilitate cleaning, will accommodate 1/8 gpf to 1/2 gpf flush valve for low consumption and includes 3/4" inlet and 1-1/2" plain end P-trap.

****Additional options available with additional cost**
2158-T-1-FVL (PICTURED)

MODELS	WT	FT	PRICE
2158-W-1	High Efficiency Urinal, Off-Floor Wall Supply		\$1,364
2158-T-1	High Efficiency Urinal, Off-Floor Top Supply		\$1,364

OPTIONS	PRICE
- ADA ADA 17" Rim Height	per unit N/C
- EG Enviro-Glaze Color to be specified	per unit \$74
- FV Flush Valve (Mechanical Non-ADA) .5 GPF	per unit \$445
- FVBO Flush Valve by Others	per unit N/C
- FVC Flush Valve Cover w/Flush Valve .5 GPF for Top Supply Units Non-ADA	per unit \$1,124
- FVCH Flush Valve Cover w/Hydraulic FV .5 GPF for Top Supply Units	per unit \$1,286
- FVH Flush Valve (Hydraulic) .5 GPF N/A on Top Supply	per unit \$679
- FVL Flush Valve with Lever Handle .5 GPF for Top Supply ADA Compliant	per unit \$364
- HP High Polish Fixture	per unit \$1,285



Price Includes: 18 gage fixture, 16 gage bowl with contour surface to facilitate cleaning, a removable strainer acting as a retainer for the drain duck billed diaphragm and an elbow waste.

****Additional options available with additional cost**
2159-1 (PICTURED)

MODELS	WT	FT	PRICE
2159-1	Waterless Urinal		\$1,343

OPTIONS	PRICE
- ADA ADA 17" Rim Height	per unit N/C
- EG Enviro-Glaze Color, Specify: _____	per unit \$74
- FM Front Mount Unit	per unit N/C



Price Includes: 16 gage 304 Stainless Steel Off-Floor, Wall Outlet Blowout Jet Urinal 14" wide with back wall wash down, fully enclosed 2-1/2" p-trap and o-ring seal waste adapter x 2" NCT

****Additional options available with additional cost**

2160-T-1-FV3.5 & 2160-W-1-FV3.5 W/2898 PANEL (PICTURED)

MODELS		WT	FT	PRICE	
(IN)	2160-T-1	Top Supply (Exposed)	40#	77.5	\$2,917
(IN)	2160-W-1	Wall Supply (Concealed)	40#	77.5	\$2,917

OPTIONS			PRICE
- CFR	Continuous Flushing Rim	per unit	\$117
- EG	Enviro-glaze, Exterior Only (DOES NOT INCLUDE INTERIOR OF URINAL)	per unit	\$74
- FG	Fourteen Gage	per unit	N/C
- FV	Flush Valve (Mechanical)	per unit	\$445
- FVC	Flush Valve Cover w/Flush Valve for Top Supply Units	per unit	\$1,124
- FVCH	Flush Valve Cover w/Hydraulic FV for Top Supply Units	per unit	\$1,286
- FVH	Flush Valve (Hydraulic) N/A on Top Supply	per unit	\$679
- FVL	Flush Valve for Top Supply with Lever Handle ADA Compliant	per unit	\$364
- FVT	Flush Valve Thru Wall Connection for Wall Supply Units	per unit	\$65
- MVCFV	Time-trol Electronic Flush Valve N/A on Top Supply	per unit	\$1,099
- TF	Transformer for Time-trol (for up to 12 solenoids)	each	\$112
- WA1	Waste Adapter to 2" NCT Female	each	\$86
- WA2	Waste Adapter to 2" NPT Male	each	\$86
- WA3	Waste Adapter to 2" NPT Female	each	\$86
- WA4	Waste Adapter to 2" No-Hub	each	\$86



Price Includes: 16 gage 304 Stainless Steel Off-Floor, Wall Outlet Washout Urinal 14" wide with back wall wash down, fully enclosed 2-1/2" p-trap and o-ring seal waste adapter x 2" NCT

****Additional options available below with additional cost**

2162-T-1-FVL & 2162-W-1-FV W/2898 PANEL (PICTURED)

MODELS			WT	FT	PRICE
(BO)	2162-T-1	Top Supply (Exposed)	40#	77.5	\$2,952
(BO)	2162-W-1	Wall Supply (Concealed)	40#	77.5	\$2,952

OPTIONS			PRICE
- CFR	Continuous Flushing Rim	per unit	\$117
- EG	Enviro-glaze, Exterior Only (DOES NOT INCLUDE INTERIOR OF URINAL)	per unit	\$74
- FG	Fourteen Gage	per unit	N/C
- FV	Flush Valve (Mechanical)	per unit	\$445
- FVC	Flush Valve Cover w/Flush Valve for Top Supply Units	per unit	\$1,124
- FVCH	Flush Valve Cover w/Hydraulic FV for Top Supply Units	per unit	\$1,286
- FVH	Flush Valve (Hydraulic) N/A on Top Supply	per unit	\$679
- FVL	Flush Valve for Top Supply with Lever Handle ADA Compliant	per unit	\$364
- FVT	Flush Valve Thru Wall Connection for Wall Supply Units	per unit	\$65
- MVCFV	Time-trol Electronic Flush Valve N/A on Top Supply	per unit	\$1,099
- TF	Transformer for Time-trol (for up to 12 solenoids)	each	\$112
- WA1	Waste Adapter to 2" NCT Female	each	\$86
- WA2	Waste Adapter to 2" NPT Male	each	\$86
- WA3	Waste Adapter to 2" NPT Female	each	\$86
- WA4	Waste Adapter to 2" No-Hub	each	\$86



Price Includes: 16 gage 304 Stainless Steel Off-Floor, Wall Outlet Blowout Jet ADA Compliant Urinal 12" wide with back wall wash down, fully enclosed 2-1/2" p-trap and o-ring seal waste adapter x 2" NCT

****Additional options available below with additional cost**

****ADA Compliant when mounted per recommended heights and provided with**

MODELS		WT	FT	PRICE	
(IN)	2165-T-1	Top Supply (Exposed)	40#	77.5	\$2,966
(IN)	2165-W-1	Wall Supply (Concealed)	40#	77.5	\$2,966

OPTIONS			PRICE
- CFR	Continuous Flushing Rim	per unit	\$117
- EG	Enviro-glaze, Exterior Only (DOES NOT INCLUDE INTERIOR OF URINAL)	per unit	\$74
- FG	Fourteen Gage	per unit	N/C
- FV	Flush Valve (Mechanical) ADA w/Top Supply Only	per unit	\$445
- FVC	Flush Valve Cover w/FV for Top Supply Units N/A with ADA	per unit	\$1,124
- FVCH	Flush Valve Cover w/Hydraulic FV for Top Supply Units	per unit	\$1,286
- FVH	Flush Valve (Hydraulic) N/A on Top Supply	per unit	\$679
- FVL	Flush Valve for Top Supply with Lever Handle ADA Compliant	per unit	\$364
- FVT	Flush Valve Thru Wall Connection for Wall Supply Units	per unit	\$65
- MVCFV	Time-trol Electronic Flush Valve 3.5 GPF N/A on Top Supply	per unit	\$1,099
- TF	Transformer for Time-trol (for up to 12 solenoids)	each	\$112
- WA1	Waste Adapter to 2" NCT Female	each	\$86
- WA2	Waste Adapter to 2" NPT Male	each	\$86
- WA3	Waste Adapter to 2" NPT Female	each	\$86
- WA4	Waste Adapter to 2" No-Hub	each	\$86



Price Includes: 16 gage 304 Stainless Steel Off-Floor, Wall Outlet Washout ADA Compliant Urinal 12" wide with back wall wash down, fully enclosed 2-1/2" p-trap and o-ring seal waste adapter x 2" NCT

****Additional options available below with additional cost**

****ADA Compliant when mounted per recommended heights and provided with the appropriate flush valve**

MODELS			WT	FT	PRICE
(IN)	2167-T-1	Top Supply (Exposed)	40#	77.5	\$3,031
(IN)	2167-W-1	Wall Supply (Concealed)	40#	77.5	\$3,031

OPTIONS			PRICE
- CFR	Continuous Flushing Rim	per unit	\$117
- EG	Enviro-glaze, Exterior Only (DOES NOT INCLUDE INTERIOR OF URINAL)	per unit	\$74
- FG	Fourteen Gage	per unit	N/C
- FV	Flush Valve (Mechanical) ADA w/Top Supply Only	per unit	\$445
- FVC	Flush Valve Cover w/FV for Top Supply Units N/A with ADA	per unit	\$1,124
- FVCH	Flush Valve Cover w/Hydraulic FV for Top Supply Units	per unit	\$1,286
- FVH	Flush Valve (Hydraulic) N/A on Top Supply	per unit	\$679
- FVL	Flush Valve for Top Supply with Lever Handle ADA Compliant	per unit	\$364
- FVT	Flush Valve Thru Wall Connection for Wall Supply Units	per unit	\$65
- MVCFV	Time-trol Electronic Flush Valve N/A on Top Supply	per unit	\$1,099
- TF	Transformer for Time-trol (for up to 12 solenoids)	each	\$112
- WA1	Waste Adapter to 2" NCT Female	each	\$86
- WA2	Waste Adapter to 2" NPT Male	each	\$86
- WA3	Waste Adapter to 2" NPT Female	each	\$86
- WA4	Waste Adapter to 2" No-Hub	each	\$86



Price Includes: 16 gage 304 Stainless Steel Off-Floor, Wall Outlet Washout Multi-Person Trough Urinal with back wall wash down, fully enclosed 2-1/2" p-trap and o-ring seal waste adapter x 2" NCT

****Additional options available below with additional cost**

2174-T-1-FVL & 2174-W-1-FV W/2898 PANEL (PICTURED)

MODELS		WT	FT	PRICE	
TOP SUPPLY URINALS					
(BO)	2173-T-1	Top Supply 3' Long	65#	77.5	\$4,259
(BO)	2174-T-1	Top Supply 4' Long	85#	77.5	\$4,683
(BO)	2175-T-1	Top Supply 5' Long	105#	77.5	\$5,202
(BO)	2176-T-1	Top Supply 6' Long	125#	77.5	\$5,543
(BO)	2178-T-1	Top Supply 8' Long	145#	77.5	\$6,241
WALL SUPPLY URINALS					
(BO)	2173-W-1	Wall Supply 3' Long	65#	77.5	\$4,259
(BO)	2174-W-1	Wall Supply 4' Long	85#	77.5	\$4,683
(BO)	2175-W-1	Wall Supply 5' Long	105#	77.5	\$5,202
(BO)	2176-W-1	Wall Supply 6' Long	125#	77.5	\$5,543
(BO)	2178-W-1	Wall Supply 8' Long	145#	77.5	\$6,241
OPTIONS				PRICE	
- CFR	Continuous Flushing Rim		per unit	\$264	
- EG	Enviro-glaze, Exterior Only (DOES NOT INCLUDE INTERIOR OF URINAL)		per unit	\$147	
- FG	Fourteen Gage		per unit	N/C	
- FV	Flush Valve (Mechanical) ADA w/Top Supply Only		per unit	\$445	
- FVC	Flush Valve Cover w/Flush Valve for Top Supply Units		per unit	\$1,124	
- FVCH	Flush Valve Cover w/Hydraulic FV for Top Supply Units		per unit	\$1,286	
- FVH	Flush Valve (Hydraulic) N/A on Top Supply		per unit	\$679	
- FVL	Flush Valve for Top Supply with Lever Handle ADA Compliant		per unit	\$364	
- FVT	Flush Valve Thru Wall Connection for Wall Supply Units		per unit	\$65	
- MVCFV	Time-trol Electronic Flush Valve N/A on Top Supply		per unit	\$1,099	
- TF	Transformer for Time-trol (for up to 12 solenoids)		each	\$112	
- WA1	Waste Adapter to 2" NCT Female		each	\$86	
- WA2	Waste Adapter to 2" NPT Male		each	\$86	
- WA3	Waste Adapter to 2" NPT Female		each	\$86	
- WA4	Waste Adapter to 2" No-Hub		each	\$86	



Price Includes: 16 gage 304 Stainless Steel Stall Type On-Floor, Floor Outlet Washout Urinal, 18" wide with back wall wash down and 2" inside caulk waste connection

****Additional options available below with additional cost**

2180-T-3-FVL & 2180-W-1-FV W/2898 PANEL (PICTURED)

MODELS		WT	FT	PRICE	
(BO)	2180-T-3	Top Supply (Exposed)	65#	77.5	\$3,920
(BO)	2180-W-3	Wall Supply (Concealed)	65#	77.5	\$3,920
OPTIONS					PRICE
- CFR	Continuous Flushing Rim			per unit	\$177
- EG	Enviro-glaze, Exterior Only (DOES NOT INCLUDE INTERIOR OF URINAL)			per unit	\$147
- FG	Fourteen Gage			per unit	N/C
- FV	Flush Valve (Mechanical) N/A with ADA			per unit	\$445
- FVC	Flush Valve Cover w/FV for Top Supply Units N/A with ADA			per unit	\$1,124
- FVCH	Flush Valve Cover w/Hydraulic FV Top Supply N/A with ADA			per unit	\$1,286
- FVH	Flush Valve (Hydraulic) N/A on Top Supply			per unit	\$679
- FVL	Flush Valve for Top Supply with Lever Handle ADA Compliant			per unit	\$364
- FVT	Flush Valve Thru Wall Connection for Wall Supply Units			per unit	\$65
- MVCFV	Time-trol Electronic Flush Valve N/A on Top Supply			per unit	\$1,099
- TF	Transformer for Time-trol (for up to 12 solenoids)			each	\$112



Price Includes: 16 gage 304 Stainless Steel Top Supply Flush Valve Cover which includes specified Flush Valve

****See below for additional cost for particular flush valves required**

2802 (PICTURED)

MODELS		WT	FT	PRICE
(BO) 2802	Flush Valve Cover	5#	77.5	\$628
OPTIONS				PRICE
- EG	Enviro-Glaze Color, Specify: _____		per unit	\$74
- EVSFV	Master-trol Electronic Flush Valve		per unit	POA
- FV	Flush Valve (Mechanical) N/A with ADA		per unit	\$1,124
- FVH	Flush Valve (Hydraulic)		per unit	\$1,286
- MVCFV	Time-trol Electronic Flush Valve		per unit	POA
- PH	Paper Holder		per unit	\$97
- SLPT	Sloping Top		per unit	N/C
- TF	Transformer for Time-trol (for up to 12 solenoids)		each	\$112



Price Includes: 16 gage 304 Stainless Steel Recessed Wall Box and Internal Flush Valve with removable front Panel made from 14 gage 304 stainless steel

****See below for additional cost for particular flush valves required**

2803-1-FV (PICTURED)

MODELS		WT	FT	PRICE
(BO) 2803-1	Wall Box with Mechanical FV	5#	77.5	\$1,279
(BO) 2803-1H	Wall Box with Hydraulic FV	5#	77.5	\$1,279
OPTIONS				PRICE
- EG	Enviro-Glaze Color, Specify: _____		per unit	\$74
- EVSFV	Master-trol Electronic Flush Valve		per unit	POA
- MVCFV	Time-trol Electronic Flush Valve		per unit	POA



Price Includes: 20 gage Galvanized Wall Frame/Sleeve and 14 gage 304 Stainless Steel removable front panel punched for flush valve (not included) which is designed to be installed inside the wall not within the access panel

MODELS		WT	FT	PRICE
(BO) 2898	Access Panel	5#	77.5	\$304
OPTIONS				PRICE
- EG	Enviro-Glaze Color, Specify: _____		per unit	\$74



ACORN ENGINEERING COMPANY

LIST PRICE GUIDE

MEMBER OF MORRIS GROUP INTERNATIONAL

TF 800-488-8999 :: PH 626-336-4561 :: info@acorneng.com

L1P00021DM22A

Prices in US\$ Effective November 1, 2022

MERIDIAN 2140 Series

Blowout Jet Toilet



Price Includes: 16 gage 304 Stainless Steel Blowout Jet Toilet with standard 2-3/8" plain end waste on rear mount units and standard 2-3/8" gasketed waste on front mount units and punched for optional or seat by others

****Additional options below with additional cost**

2140-W-2-RM (PICTURED)

	MODELS		WT	FT		PRICE
(BO)	2140-T-1	Top Supply Off-Floor, Wall Outlet	35#	92.5	per unit	\$2,846
(BO)	2140-T-2	Top Supply On-Floor, Wall Outlet	35#	92.5	per unit	\$2,846
(BO)	2140-W-1	Wall Supply Off-Floor, Wall Outlet	35#	92.5	per unit	\$2,846
(BO)	2140-W-2	Wall Supply On-Floor, Wall Outlet	35#	92.5	per unit	\$2,846

	OPTIONS		PRICE
- 316	316 Stainless Steel in lieu of 304	per unit	POA
- ADA	18" Integral Seat Rim Height Additional cost only applies On-Floor Units	per unit	\$86
- CO1	Cleanout w/O-Ring Connection to No-Hub 2-3/8" X 4" for Rear Mount Units Only	each	\$78
- CO1_3	Cleanout w/O-Ring Connection to No-Hub 2-3/8" X 3" for Rear Mount Units Only	each	\$78
- EG	Enviro-Glaze Color, Specify _____	per unit	\$74
- EVSFV	Master-trol Electronic Flush Valve N/A with Top Supply	per unit	POA
- EVSFTE	Master-trol Electronic Flood-trol N/A with Top Supply	per unit	POA
- EVSPFV	Master-Trol Elect. Flush Valve w/Piezo Button	per unit	POA
- FG	14 gage Unit	per unit	N/C
- FM	Front Mount Unit	per unit	N/C
- FV	Flush Valve (Mechanical) 1.6/3.5 GPF N/A with ADA Units	each	\$445
- FVC	Flush Valve Cover w/Flush Valve 1.6/3.5 GPF N/A WITH ADA	each	\$1,124
- FVCH	Flush Valve Cover w/Hydraulic FV 1.6/3.5 GPF for Top Supply	each	\$1,286
- FVH	Flush Valve (Hydraulic) 1.6/3.5 GPF N/A on Top Supply	each	\$679
- FVL	Flush Valve with Lever Handle for Top Supply ADA Compliant	each	\$364
- FVT	Flush Valve thru Wall Connection for Wall Supply	per unit	\$65
- GW	Gasketed Waste	per unit	\$42
- HET	High Efficiency Toilet	per unit	\$184
- HP	High Polish Exterior Finish Only	per unit	\$1,176
- HPS	High Polish Seat with #7 finish	per unit	\$27
- HS-LC	Hinged Seat Open Front Less Cover	per unit	\$194
- HS-WC	Hinged Seat, Open Front With Cover	per unit	\$194
- LPFS	Less Punch for Hinged Seat	per unit	N/C
- MC	Mounting Carrier Available only on Front Mount Top Supply Units	per unit	\$482
- MCVFV	Time-trol Electronic Flush Valve 1.6/3.5 GPF N/A with Top Supply	per unit	\$1,099
- MT	Metal Template	each	\$170
- RM	Rear mount Unit	per unit	N/C
- SW	Wall Sleeve for Rear Mount units Only	each	\$205
- TF	Transformer for Time-trol (for up to 12 solenoids)	per unit	\$112
- VAC	Acorn-Vac System	per unit	POA
- WO3	Waste Outlet 3" P-Trap N/A with 1.6 GPF	per unit	\$264

AVAILABILITY LEGEND =====

[IN] = In Stock; [PS] = Partial in Stock; [BO] = Built to Order

[RE] = Requires Engineering; [MOD] = Modified with Engineering



ACORN ENGINEERING COMPANY

LIST PRICE GUIDE

MEMBER OF MORRIS GROUP INTERNATIONAL

TF 800-488-8999 :: PH 626-336-4561 :: info@acorneng.com

L1P00021DM22A

Prices in US\$ Effective November 1, 2022



Price Includes: 16 gage 304 Stainless Steel Siphon Jet Toilet with standard 2-3/8" plain end waste on rear mount units and standard 2-3/8" gasketed waste on front mount units and punched for optional or seat by others

****Additional options below with additional cost**

2141-W-2-RM (PICTURED)

	MODELS		WT	FT		PRICE
(BO)	2141-T-1	Top Supply Off-Floor, Wall Outlet	35#	92.5	per unit	\$2,846
(BO)	2141-T-2	Top Supply On-Floor, Wall Outlet	35#	92.5	per unit	\$2,846
(BO)	2141-T-3	Top Supply On-Floor, Floor Outlet	35#	92.5	per unit	\$2,983
(BO)	2141-W-1	Wall Supply Off-Floor, Wall Outlet	35#	92.5	per unit	\$2,846
(BO)	2141-W-2	Wall Supply On-Floor, Wall Outlet	35#	92.5	per unit	\$2,846
(BO)	2141-W-3	Wall Supply On-Floor, Floor Outlet	35#	92.5	per unit	\$2,983

	OPTIONS			PRICE
- 316	316 Stainless Steel in lieu of 304		per unit	POA
- ADA	18" Integral Seat Rim Height Additional cost only applies On-Floor Units		per unit	\$86
- CO1	Cleanout w/O-Ring Connection to No-Hub 2-3/8" X 4" for Rear Mount Units Only		each	\$78
- CO1_3	Cleanout w/O-Ring Connection to No-Hub 2-3/8" X 3" for Rear Mount Units Only		each	\$78
- EG	Enviro-Glaze Color, Specify _____		per unit	\$74
- EVSFV	Master-trol Electronic Flush Valve N/A with Top Supply		per unit	POA
- EVSFTE	Master-trol Electronic Flood-trol N/A with Top Supply		per unit	POA
- EVSPFV	Master-Trol Elect. Flush Valve w/Piezo Button		per unit	POA
- FG	14 gage Unit		per unit	N/C
- FM	Front Mount Unit		per unit	N/C
- FV	Flush Valve (Mechanical) 1.6/3.5 GPF N/A with ADA Units		each	\$445
- FVC	Flush Valve Cover w/Flush Valve 1.6/3.5 GPF N/A WITH ADA		each	\$1,124
- FVCH	Flush Valve Cover w/Hydraulic FV 1.6/3.5 GPF for Top Supply		each	\$1,286
- FVH	Flush Valve (Hydraulic) 1.6/3.5 GPF N/A on Top Supply		each	\$679
- FVL	Flush Valve with Lever Handle for Top Supply ADA Compliant		each	\$364
- FVT	Flush Valve thru Wall Connection for Wall Supply		per unit	\$65
- GW	Gasketed Waste		per unit	\$42
- HET	High Efficiency Toilet		per unit	\$184
- HP	High Polish Exterior Finish Only		per unit	\$1,176
- HPS	High Polish Seat with #7 finish		per unit	\$27
- HS-LC	Hinged Seat Open Front Less Cover		per unit	\$194
- HS-WC	Hinged Seat, Open Front With Cover		per unit	\$194
- LPFS	Less Punch for Hinged Seat		per unit	N/C
- MC	Mounting Carrier Available only on Front Mount Top Supply Units		per unit	\$482
- MCVFV	Time-trol Electronic Flush Valve 1.6/3.5 GPF N/A with Top Supply		per unit	\$1,099
- MT	Metal Template		each	\$170
- RM	Rear Mount Unit		per unit	N/C
- SW	Wall Sleeve for Rear Mount units Only		each	\$205
- TF	Transformer for Time-trol (for up to 12 solenoids)		per unit	\$112
- VAC	Acorn-Vac System		per unit	POA
- WO3	Waste Outlet 3" P-Trap N/A with 1.6 GPF		per unit	\$264

AVAILABILITY LEGEND =====

[IN] = In Stock; [PS] = Partial in Stock; [BO] = Built to Order

[RE] = Requires Engineering; [MOD] = Modified with Engineering



ACORN ENGINEERING COMPANY

LIST PRICE GUIDE

MEMBER OF MORRIS GROUP INTERNATIONAL

TF 800-488-8999 :: PH 626-336-4561 :: info@acorneng.com

L1P00021DM22A

Prices in US\$ Effective November 1, 2022

REPLACE-WARE 3315 Series

15" Lavatory - Toilet Comby - Replacement



Price Includes: 14 gage 304 Stainless Steel 15" wide Replacement Comby with integral multi-sided lavy, elbow waste 1-1/4" NPT female outlet, toilet with standard 2-3/8" gasketed waste and intended for use with existing hardware, waste and valves

****Additional options below with additional cost**

3315-CT-2-BP-04 & 3315-AL-2-BP-04-PHRF (PICTURED)

MODELS		WT	FT	PRICE	
ANGLED LEFT (-AL), ANGLED RIGHT (-AR) OR CENTERED (-CT) TOILET					
(RE)	3315-AL/AR/CT-1	Off-Floor, Wall Outlet	75#	92.5	\$3,853
(RE)	3315-AL/AR/CT-2	On-Floor, Wall Outlet	75#	92.5	\$3,853
(RE)	3315-AL/AR/CT-3	On-Floor, Floor Outlet	75#	92.5	\$3,991

OPTIONS			PRICE
- 03	Single-Temp Air Control Valve	per unit	\$467
- 03-MA2	Single-Temp Air Control Manifold to service (2) units	per unit	\$836
- 03-MA3	Single-Temp Air Control Manifold to service (3) units	per unit	\$1,260
- 03-MA4	Single-Temp Air Control Manifold to service (4) units	per unit	\$1,678
- 04	Hot & Cold Air Control Valve	per unit	\$807
- 04-MA2	Hot & Cold Air Control Manifold to service (2) units	per unit	\$1,439
- 04-MA3	Hot & Cold Air Control Manifold to service (3) units	per unit	\$2,143
- 04-MA4	Hot & Cold Air Control Manifold to service (4) units	per unit	\$2,849
- 9	Punched for Valve by Others (Specify Punching)	per unit	N/C
- 316	316 Stainless Steel in lieu of 304	per unit	POA
- BC	Bubbler, Code	each	\$119
- BP	Bubbler, Penal	each	\$119
- BPH	Hemispherical Penal Bubbler	each	\$128
- BRS	Brass Valve Body	per btn	\$136
- CO1	Cleanout w/O-Ring Connecting to No-Hub 4" -PE Option Req'd	each	\$78
- CO1_3	Cleanout w/O-ring Connecting to No-Hub 3" -PE Option Req'd	each	\$78
- COH	Cleanout Hook Assembly -PE Options Req'd	each	\$215
- CW	Combined Waste	per unit	\$106
- EG	Enviro-Glaze, Specify Color: _____	per unit	\$147
- FMT	Fixture Mounted Trim	per unit	\$48
- FT	Flood-Trol (Manual Reset)	per unit	\$541
- FTA	Flood-Trol Auto-reset	per unit	\$727
- HET	High Efficiency Toilet (for use with 2-3/8" waste ONLY)	per unit	\$184
- HPS	High Polish Seat with #7 finish	per unit	\$27
- HS	Hinged Seat	each	\$194
- IS	Integral Shelf	per unit	\$187
- LF	Lav-Filler	each	\$119
- M	Metering Air Control Valve	per unit	N/C
- MH	Metering Air Control Valve, Hot Side Only	per unit	N/C
- OF	Lavatory Overflow	per unit	\$61
- PBH	Hemispherical Pushbutton -03____ -04____	per btn	\$33
- PBP	Pushrod Activated Pushbutton	per btn	\$129

AVAILABILITY LEGEND =====

[IN] = In Stock; [PS] = Partial in Stock; [BO] = Built to Order

[RE] = Requires Engineering; [MOD] = Modified with Engineering



ACORN ENGINEERING COMPANY

LIST PRICE GUIDE

MEMBER OF MORRIS GROUP INTERNATIONAL

TF 800-488-8999 :: PH 626-336-4561 :: info@acorneng.com

L1P00021DM22A

Prices in US\$ Effective November 1, 2022

OPTIONS CONT'D			PRICE
- PC	Pinned Cleanout Plug (available only with -CO1 or -CO1_3)	each	\$55
- PFS	Punched for Seat by Others	per unit	N/C
- PH	Paper Holder __ L __ R __ C	per unit	\$97
- PT	P-Trap Waste	per unit	\$103
- SPS	Suicide Prevention Skirt (On-Floor Model Toilets Only)	per unit	\$551
- TB	Toothbrush Holder __ Left __ Right	each	\$35
- TF	Transformer for up to Twelve Solenoids	each	\$112
- TG	12 Gage Cabinet	per unit	\$303
- TH	Towel Hook __ Left __ Right	each	\$61
- TSC	Toilet Shipping Cover	per unit	\$35
- TWE	Toilet Waste Extended Beyond Standard 3" -PE Option Req'd	per inch	\$5
- VG1	Ventilation Grille 5-3/4" x 8-3/4" __ Left __ Right	each	\$106
- VG2	Ventilation Grille 8-3/4" x 13" (Bottom Only)	each	\$106
- WO3	3" Toilet P-Trap (3.5 gpf Only)	per unit	\$264

AVAILABILITY LEGEND =====

[IN] = In Stock; [PS] = Partial in Stock; [BO] = Built to Order

[RE] = Requires Engineering; [MOD] = Modified with Engineering



ACORN ENGINEERING COMPANY

LIST PRICE GUIDE

MEMBER OF MORRIS GROUP INTERNATIONAL

TF 800-488-8999 :: PH 626-336-4561 :: info@acorneng.com

L1P00021DM22A

Prices in US\$ Effective November 1, 2022



Price Includes: 14 gage 304 Stainless Steel 18" wide Replacement Comby with integral oval lavy, elbow waste 1-1/4" NPT female outlet, toilet with standard 2-3/8" gasketed waste and intended for use with existing hardware, waste and valves

****Additional options below with additional cost**

3318-CT-2-BP-04-PHLF & 3318-AL-2-BP-04-PHF (PICTURED)

MODELS		WT	FT	PRICE
ANGLED LEFT (-AL), ANGLED RIGHT (-AR) OR CENTERED (-CT) TOILET				
(RE)	3318-AL/AR/CT-1	Off-Floor, Wall Outlet	75# 92.5	\$4,030
(RE)	3318-AL/AR/CT-2	On-Floor, Wall Outlet	75# 92.5	\$4,030
(RE)	3318-AL/AR/CT-3	On-Floor, Floor Outlet	75# 92.5	\$4,164
OPTIONS				PRICE
- 03	Single-Temp Air Control Valve		per unit	\$467
- 03-MA2	Single-Temp Air Control Manifold to service (2) units		per unit	\$836
- 03-MA3	Single-Temp Air Control Manifold to service (3) units		per unit	\$1,260
- 03-MA4	Single-Temp Air Control Manifold to service (4) units		per unit	\$1,678
- 04	Hot & Cold Air Control Valve		per unit	\$807
- 04-MA2	Hot & Cold Air Control Manifold to service (2) units		per unit	\$1,439
- 04-MA3	Hot & Cold Air Control Manifold to service (3) units		per unit	\$2,143
- 04-MA4	Hot & Cold Air Control Manifold to service (4) units		per unit	\$2,849
- 9	Punched for Valve by Others (Specify Punching)		per unit	N/C
- 316	316 Stainless Steel in lieu of 304		per unit	POA
- BC	Bubbler, Code		each	\$119
- BP	Bubbler, Penal		each	\$119
- BPH	Hemispherical Penal Bubbler		each	\$128
- BRS	Brass Valve Body		per btn	\$136
- CO1	Cleanout w/O-Ring Connecting to No-Hub 4" -PE Option Req'd		each	\$78
- CO1_3	Cleanout w/O-ring Connecting to No-Hub 3" -PE Option Req'd		each	\$78
- COH	Cleanout Hook Assembly -PE Options Req'd		each	\$215
- CW	Combined Waste		per unit	\$106
- EG	Enviro-Glaze, Specify Color: _____		per unit	\$147
- FMT	Fixture Mounted Trim		per unit	\$48
- FT	Flood-Trol (Manual Reset)		per unit	\$541
- FTA	Flood-Trol Auto-reset		per unit	\$727
- HET	High Efficiency Toilet (for use with 2-3/8" waste ONLY)		per unit	\$184
- HPS	High Polish Seat with #7 finish		per unit	\$27
- HS	Hinged Seat		each	\$194
- IS	Integral Shelf		per unit	\$187
- LF	Lav-Filler		each	\$119
- M	Metering Air Control Valve		per unit	N/C
- MH	Metering Air Control Valve, Hot Side Only		per unit	N/C
- OF	Lavatory Overflow		per unit	\$61
- PBH	Hemispherical Pushbutton -03____ -04____		per btn	\$33
- PBP	Pushrod Activated Pushbutton		per btn	\$129

AVAILABILITY LEGEND =====

[IN] = In Stock; [PS] = Partial in Stock; [BO] = Built to Order

[RE] = Requires Engineering; [MOD] = Modified with Engineering



ACORN ENGINEERING COMPANY

LIST PRICE GUIDE

MEMBER OF MORRIS GROUP INTERNATIONAL

TF 800-488-8999 :: PH 626-336-4561 :: info@acorneng.com

L1P00021DM22A

Prices in US\$ Effective November 1, 2022

OPTIONS CONT'D			PRICE
- PC	Pinned Cleanout Plug (available only with -CO1 or -CO1_3)	each	\$55
- PFS	Punched for Seat by Others	per unit	N/C
- PH	Paper Holder __ L __ R __ C	per unit	\$97
- PT	P-Trap Waste	per unit	\$103
- SPS	Suicide Prevention Skirt (On-Floor Model Toilets Only)	per unit	\$551
- TB	Toothbrush Holder __ Left __ Right	each	\$35
- TF	Transformer for up to Twelve Solenoids	each	\$112
- TG	12 Gage Cabinet	per unit	\$303
- TH	Towel Hook __ Left __ Right	each	\$61
- TSC	Toilet Shipping Cover	per unit	\$35
- TWE	Toilet Waste Extended Beyond Standard 3" -PE Option Req'd	per inch	\$5
- VG1	Ventilation Grille 5-3/4" x 8-3/4" __ Left __ Right	each	\$106
- VG2	Ventilation Grille 8-3/4" x 13" (Bottom Only)	each	\$106
- WO3	3" Toilet P-Trap (3.5 gpf Only)	per unit	\$264

AVAILABILITY LEGEND =====

[IN] = In Stock; [PS] = Partial in Stock; [BO] = Built to Order

[RE] = Requires Engineering; [MOD] = Modified with Engineering



ACORN ENGINEERING COMPANY

LIST PRICE GUIDE

MEMBER OF MORRIS GROUP INTERNATIONAL

TF 800-488-8999 :: PH 626-336-4561 :: info@acorneng.com

L1P00021DM22A

Prices in US\$ Effective November 1, 2022



Price Includes: 14 gage 304 Stainless Steel Repl. Lavy 15" wide x 11" deep with integral multi-sided bowl, 1-1/4" p-trap with NPT female fitting and intended for use with existing hardware, waste and valves

****Additional options available below with additional cost**

3325-1-BP-04 (PICTURED)

MODELS		WT	FT	PRICE
(RE) 3325-1	15" Repl. Lavy	30#	92.5	\$1,538
OPTIONS				PRICE
- 03	Single-Temp Air Control Valve		per unit	\$467
- 03-MA2	Single-Temp Air Control Manifold to service (2) units		per unit	\$836
- 03-MA3	Single-Temp Air Control Manifold to service (3) units		per unit	\$1,260
- 03-MA4	Single-Temp Air Control Manifold to service (4) units		per unit	\$1,678
- 04	Hot & Cold Air Control Valve		per unit	\$807
- 04-MA2	Hot & Cold Air Control Manifold to service (2) units		per unit	\$1,439
- 04-MA3	Hot & Cold Air Control Manifold to service (3) units		per unit	\$2,143
- 04-MA4	Hot & Cold Air Control Manifold to service (4) units		per unit	\$2,849
- 9	Punched for Valve by Others (Specify Punching)		per unit	N/C
- 316	316 Stainless Steel in lieu of 304		per unit	POA
- BC	Bubbler, Code		each	\$119
- BP	Bubbler, Penal		each	\$119
- BPH	Hemispherical Penal Bubbler		each	\$128
- BRS	Brass Valve Body		per btn	\$136
- EG	Enviro-Glaze, Specify Color: _____		per unit	\$74
- FMT	Fixture Mounted Trim		per unit	\$48
- IS	Integral Shelf		per unit	\$187
- LF	Lav-Filler		each	\$119
- M	Metering		per unit	N/C
- MH	Metering, Hot Side Only		per unit	N/C
- OF	Overflow (Lavy)		per unit	\$61
- PBH	Hemispherical Pushbutton		per btn	\$33
- PBP	Pushrod Activated Pushbutton		per btn	\$129
- PH	Integral Paper Holder		per unit	\$97
- PT	P-Trap Waste		per unit	\$103
- TB	Toothbrush Holder ___ Left ___ Right		each	\$35
- TF	Transformer (for up to 12 solenoids)		each	\$112
- TG	12 Gage Cabinet		per unit	\$151
- TH	Towel Hook ___ Left ___ Right		each	\$61
- VG3	Ventilation Grille 8-3/4" x 8-3/4" ___ Left ___ Right		each	\$106
- VG4	Ventilation Grille 8-3/4" x 17" (Bottom Only)		each	\$106

AVAILABILITY LEGEND =====

[IN] = In Stock; [PS] = Partial in Stock; [BO] = Built to Order

[RE] = Requires Engineering; [MOD] = Modified with Engineering



ACORN ENGINEERING COMPANY

LIST PRICE GUIDE

MEMBER OF MORRIS GROUP INTERNATIONAL

TF 800-488-8999 :: PH 626-336-4561 :: info@acorneng.com

L1P00021DM22A

Prices in US\$ Effective November 1, 2022



Price Includes: 14 gage 304 Stainless Steel Repl. Lavy 18" wide x 12-1/2" deep with integral multi-sided bowl, 1-1/4" p-trap with NPT female fitting and intended for use with existing hardware, waste and valves

****Additional options available below with additional cost**

3326-1-BP-04 (PICTURED)

MODELS		WT	FT	PRICE	
(RE)	3326-1	18" Repl. Lavy	35#	92.5	\$1,608
OPTIONS					PRICE
- 03	Single-Temp Air Control Valve			per unit	\$467
- 03-MA2	Single-Temp Air Control Manifold to service (2) units			per unit	\$836
- 03-MA3	Single-Temp Air Control Manifold to service (3) units			per unit	\$1,260
- 03-MA4	Single-Temp Air Control Manifold to service (4) units			per unit	\$1,678
- 04	Hot & Cold Air Control Valve			per unit	\$807
- 04-MA2	Hot & Cold Air Control Manifold to service (2) units			per unit	\$1,439
- 04-MA3	Hot & Cold Air Control Manifold to service (3) units			per unit	\$2,143
- 04-MA4	Hot & Cold Air Control Manifold to service (4) units			per unit	\$2,849
- 9	Punched for Valve by Others (Specify Punching)			per unit	N/C
- 316	316 Stainless Steel in lieu of 304			per unit	POA
- BC	Bubbler, Code			each	\$119
- BP	Bubbler, Penal			each	\$119
- BPH	Hemispherical Penal Bubbler			each	\$128
- BRS	Brass Valve Body			per btn	\$136
- EG	Enviro-Glaze, Specify Color:_____			per unit	\$74
- FMT	Fixture Mounted Trim			per unit	\$48
- IS	Integral Shelf			per unit	\$187
- LF	Lav-Filler			each	\$119
- M	Metering			per unit	N/C
- MH	Metering, Hot Side Only			per unit	N/C
- OF	Overflow (Lavy)			per unit	\$61
- PBH	Hemispherical Pushbutton			per btn	\$33
- PBP	Pushrod Activated Pushbutton			per btn	\$129
- PH	Integral Paper Holder			per unit	\$97
- PT	P-Trap Waste			per unit	\$103
- TB	Toothbrush Holder ___Left ___Right			each	\$35
- TF	Transformer (for up to 12 solenoids)			each	\$112
- TG	12 Gage Cabinet			per unit	\$151
- TH	Towel Hook ___Left ___Right			each	\$61
- VG3	Ventilation Grille 8-3/4" x 8-3/4" ___ Left ___ Right			each	\$106
- VG4	Ventilation Grille 8-3/4" x 17" (Bottom Only)			each	\$106

AVAILABILITY LEGEND =====

[IN] = In Stock; [PS] = Partial in Stock; [BO] = Built to Order

[RE] = Requires Engineering; [MOD] = Modified with Engineering



ACORN ENGINEERING COMPANY

LIST PRICE GUIDE

MEMBER OF MORRIS GROUP INTERNATIONAL

TF 800-488-8999 :: PH 626-336-4561 :: info@acorneng.com

L1P00021DM22A

Prices in US\$ Effective November 1, 2022



Price Includes: 14 gage 304 Stainless Steel Off-Floor, Wall Outlet Blowout Jet Toilet for Rear or Front Mount Installation with standard 2-3/8" gasketed waste outlet and intended for use with existing hardware, waste and valve

****Additional options available below with additional cost**

****ADA Compliant when mounted per recommended heights and provided with Hydraulic Flush Valves**

3331-W-1-CN (PICTURED)

MODELS		WT	FT	PRICE	
REAR MOUNTED TOILET					
(RE)	3330-T-1	Top Supply (Exposed)	40#	92.5	\$2,268
(RE)	3330-W-1	Wall Supply (Concealed)	40#	92.5	\$2,268
FRONT MOUNTED TOILET					
(RE)	3331-T-1	Top Supply (Exposed)	40#	92.5	\$2,268
(RE)	3331-W-1	Wall Supply (Concealed)	40#	92.5	\$2,268
OPTIONS				PRICE	
- 3395	Anchoring Assembly		each	\$213	
- 316	316 Stainless Steel in lieu of 304		per unit	POA	
- BCN	Blind Cap Nuts		per unit	\$91	
- BL	Bedpan Lugs		per unit	\$116	
- CN	Cap Nuts		per unit	\$89	
- EG	Enviro-Glaze Color, Specify _____		per unit	\$74	
- FG	14 gage Unit		per unit	N/C	
- FT	Flood-trol Manual Reset N/A with Top Supply Units		per unit	\$541	
- FTA	Flood-trol Auto-reset N/A with Top Supply Units		per unit	\$727	
- FV	Flush Valve (Mechanical) 1.6/3.5 GPF N/A with ADA Units		each	\$445	
- FVC	Flush Valve Cover w/Mech. FV 1.6/3.5 GPF for Top Supply Units N/A with ADA		per unit	\$1,124	
- FVCH	Flush Valve Cover w/Hydraulic FV 1.6/3.5 GPF for Top Supply Units		per unit	\$1,286	
- FVH	Flush Valve (Hydraulic) 1.6/3.5 GPF		each	\$679	
- FVL	Flush Valve with Lever Handle for Top Supply ADA Compliant		per unit	\$364	
- FVT	Flush Valve thru Wall Connection for Wall Supply		per unit	\$65	
- HET	High Efficiency Toilet (for use with 2-3/8" waste ONLY)		per unit	\$184	
- HPS	High Polish Seat with #7 finish		per unit	\$27	
- HS	Hinged Seat Open Front Less Cover		per unit	\$194	
- HSC	Hinged Seat with Cover		per unit	\$194	
- MCVFV	Time-trol Electronic Flush Valve 1.6/3.5 GPF N/A with Top Supply		per unit	\$1,099	
- PE	Plain End Toilet Waste 2-3/8" in lieu of standard Gasketed		per unit	N/C	
- PFS	Punched for Hinged Seat by Others		per unit	N/C	
- PH	Paper Holder Integral for Flush Valve Cover Option Only (-FVC)		per unit	\$97	
- TF	Transformer for Time-trol (for up to 12 solenoids)		per unit	\$112	
- TSC	Toilet Shipping Cover		per unit	\$35	
- WO3	Waste Outlet 3" P-Trap N/A with 1.6 GPF		per unit	\$264	

AVAILABILITY LEGEND =====

[IN] = In Stock; [PS] = Partial in Stock; [BO] = Built to Order

[RE] = Requires Engineering; [MOD] = Modified with Engineering



ACORN ENGINEERING COMPANY

LIST PRICE GUIDE

MEMBER OF MORRIS GROUP INTERNATIONAL

TF 800-488-8999 :: PH 626-336-4561 :: info@acorneng.com

L1P00021DM22A

Prices in US\$ Effective November 1, 2022



Price Includes: 14 gage 304 Stainless Steel Off-Floor, Wall Outlet Siphon Jet Toilet for Rear or Front Mount Installation with standard 2-3/8" gasketed waste outlet and intended for use with existing hardware, waste and valve

****Additional options available below with additional cost**

****ADA Compliant when mounted per recommended heights and provided with Hydraulic Flush Valves**

3333-W-1-CN (PICTURED)

MODELS		WT	FT	PRICE	
REAR MOUNTED TOILET					
(RE)	3332-T-1	Top Supply (Exposed)	45#	92.5	\$2,739
(RE)	3332-W-1	Wall Supply (Concealed)	45#	92.5	\$2,739
FRONT MOUNTED TOILET					
(RE)	3333-T-1	Top Supply (Exposed)	45#	92.5	\$2,739
(RE)	3333-W-1	Wall Supply (Concealed)	45#	92.5	\$2,739
OPTIONS					PRICE
- 316	316 Stainless Steel in lieu of 304			per unit	POA
- BCN	Blind Cap Nuts			per unit	\$91
- BL	Bedpan Lugs			per unit	\$116
- CN	Cap Nuts			per unit	\$89
- EG	Enviro-Glaze Color, Specify _____			per unit	\$74
- FG	14 gage Unit			per unit	N/C
- FT	Flood-trol Manual Reset N/A with Top Supply Units			per unit	\$541
- FTA	Flood-trol Auto-reset N/A with Top Supply Units			per unit	\$727
- FV	Flush Valve (Mechanical) 1.6/3.5 GPF N/A with ADA Units			each	\$445
- FVC	Flush Valve Cover w/Mech. FV 1.6/3.5 GPF for Top Supply Units N/A with ADA			per unit	\$1,124
- FVCH	Flush Valve Cover w/Hydraulic FV 1.6/3.5 GPF for Top Supply Units			per unit	\$1,286
- FVH	Flush Valve (Hydraulic) 1.6/3.5 GPF			each	\$679
- FVL	Flush Valve with Lever Handle for Top Supply ADA Compliant			per unit	\$364
- FVT	Flush Valve thru Wall Connection for Wall Supply			per unit	\$65
- HET	High Efficiency Toilet (for use with 2-3/8" waste ONLY)			per unit	\$184
- HPS	High Polish Seat with #7 finish			per unit	\$27
- HS	Hinged Seat Open Front Less Cover			per unit	\$194
- HSC	Hinged Seat with Cover			per unit	\$194
- MCVFV	Time-trol Electronic Flush Valve 1.6/3.5 GPF N/A with Top Supply			per unit	\$1,099
- PE	Plain End Toilet Waste 2-3/8" in lieu of standard Gasketed			per unit	N/C
- PFS	Punched for Hinged Seat by Others			per unit	N/C
- PH	Paper Holder Integral for Flush Valve Cover Option Only (-FVC)			per unit	\$97
- TF	Transformer for Time-trol (for up to 12 solenoids)			per unit	\$112
- TSC	Toilet Shipping Cover			per unit	\$35
- WO3	Waste Outlet 3" P-Trap N/A with 1.6 GPF			per unit	\$264

AVAILABILITY LEGEND =====

[IN] = In Stock; [PS] = Partial in Stock; [BO] = Built to Order

[RE] = Requires Engineering; [MOD] = Modified with Engineering



ACORN ENGINEERING COMPANY

LIST PRICE GUIDE

MEMBER OF MORRIS GROUP INTERNATIONAL

TF 800-488-8999 :: PH 626-336-4561 :: info@acorneng.com

L1P00021DM22A

Prices in US\$ Effective November 1, 2022



Price Includes: 14 gage 304 Stainless Steel On-Floor, Wall Outlet Blowout Jet Toilet for Rear or Front Mount Installation with standard 2-3/8" gasketed waste outlet and intended for use with existing hardware, waste and valve

****Additional options available below with additional cost**

3335-W-2 (PICTURED)

MODELS		WT	FT	PRICE
REAR MOUNTED TOILET				
(RE) 3334-T-2	Top Supply (Exposed)	40#	92.5	\$2,834
(RE) 3334-W-2	Wall Supply (Concealed)	40#	92.5	\$2,834
FRONT MOUNTED TOILET				
(RE) 3335-T-2	Top Supply (Exposed)	40#	92.5	\$2,834
(RE) 3335-W-2	Wall Supply (Concealed)	40#	92.5	\$2,834
OPTIONS		PRICE		
- 316	316 Stainless Steel in lieu of 304		per unit	POA
- ADA	18" Integral Seat Rim Height		per unit	\$86
- BCN	Blind Cap Nuts		per unit	\$91
- BL	Bedpan Lugs		per unit	\$116
- CN	Cap Nuts		per unit	\$89
- EG	Enviro-Glaze Color, Specify _____		per unit	\$74
- FG	14 gage Unit		per unit	N/C
- FT	Flood-trol Manual Reset N/A with Top Supply Units		per unit	\$541
- FTA	Flood-trol Auto-reset N/A with Top Supply Units		per unit	\$727
- FV	Flush Valve (Mechanical) 1.6/3.5 GPF N/A with ADA Units		each	\$445
- FVC	Flush Valve Cover w/Mech. FV 1.6/3.5 GPF for Top Supply Units N/A with ADA		per unit	\$1,124
- FVCH	Flush Valve Cover w/Hydraulic FV 1.6/3.5 GPF for Top Supply Units		per unit	\$1,286
- FVH	Flush Valve (Hydraulic) 1.6/3.5 GPF		each	\$679
- FVL	Flush Valve with Lever Handle for Top Supply ADA Compliant		per unit	\$364
- FVT	Flush Valve thru Wall Connection for Wall Supply		per unit	\$65
- HET	High Efficiency Toilet (for use with 2-3/8" waste ONLY)		per unit	\$184
- HPS	High Polish Seat with #7 finish		per unit	\$27
- HS	Hinged Seat Open Front Less Cover		per unit	\$194
- HSC	Hinged Seat with Cover		per unit	\$194
- MVCFV	Time-trol Electronic Flush Valve 1.6/3.5 GPF N/A with Top Supply		per unit	\$1,099
- PE	Plain End Toilet Waste 2-3/8" in lieu of standard Gasketed		per unit	N/C
- PFS	Punched for Hinged Seat by Others		per unit	N/C
- PH	Paper Holder Integral for Flush Valve Cover Option Only (-FVC)		per unit	\$97
- TF	Transformer for Time-trol (for up to 12 solenoids)		per unit	\$112
- TSC	Toilet Shipping Cover		per unit	\$35
- WO3	Waste Outlet 3" P-Trap N/A with 1.6 GPF		per unit	\$264

AVAILABILITY LEGEND =====

[IN] = In Stock; [PS] = Partial in Stock; [BO] = Built to Order

[RE] = Requires Engineering; [MOD] = Modified with Engineering



ACORN ENGINEERING COMPANY

LIST PRICE GUIDE

MEMBER OF MORRIS GROUP INTERNATIONAL

TF 800-488-8999 :: PH 626-336-4561 :: info@acorneng.com

L1P00021DM22A

Prices in US\$ Effective November 1, 2022



Price Includes: 14 gage 304 Stainless Steel On-Floor, Floor Outlet Blowout Jet Toilet for Rear or Front Mount Installation with standard 2-3/8" gasketed waste outlet and intended for use with existing hardware, waste and valve

****Additional options available below with additional cost**

3337-W-3 (PICTURED)

MODELS		WT	FT	PRICE
REAR MOUNTED TOILET				
(RE) 3336-T-3	Top Supply (Exposed)	50#	92.5	\$2,877
(RE) 3336-W-3	Wall Supply (Concealed)	50#	92.5	\$2,877
FRONT MOUNTED TOILET				
(RE) 3337-T-3	Top Supply (Exposed)	50#	92.5	\$2,877
(RE) 3337-W-3	Wall Supply (Concealed)	50#	92.5	\$2,877
OPTIONS		PRICE		
- 316	316 Stainless Steel in lieu of 304	per unit	POA	
- ADA	18" Integral Seat Rim Height	per unit	\$86	
- BCN	Blind Cap Nuts	per unit	\$91	
- BL	Bedpan Lugs	per unit	\$116	
- CN	Cap Nuts	per unit	\$89	
- EG	Enviro-Glaze Color, Specify _____	per unit	\$74	
- FG	14 gage Unit	per unit	N/C	
- FT	Flood-trol Manual Reset N/A with Top Supply Units	per unit	\$541	
- FTA	Flood-trol Auto-reset N/A with Top Supply Units	per unit	\$727	
- FV	Flush Valve (Mechanical) 1.6/3.5 GPF N/A with ADA Units	each	\$445	
- FVC	Flush Valve Cover w/Mech. FV 1.6/3.5 GPF for Top Supply Units N/A with ADA	per unit	\$1,124	
- FVCH	Flush Valve Cover w/Hydraulic FV 1.6/3.5 GPF for Top Supply Units	per unit	\$1,286	
- FVH	Flush Valve (Hydraulic) 1.6/3.5 GPF	each	\$679	
- FVL	Flush Valve with Lever Handle for Top Supply ADA Compliant	per unit	\$364	
- FVT	Flush Valve thru Wall Connection for Wall Supply	per unit	\$65	
- HET	High Efficiency Toilet (for use with 2-3/8" waste ONLY)	per unit	\$184	
- HPS	High Polish Seat with #7 finish	per unit	\$27	
- HS	Hinged Seat Open Front Less Cover	per unit	\$194	
- HSC	Hinged Seat with Cover	per unit	\$194	
- MVCFV	Time-trol Electronic Flush Valve 1.6/3.5 GPF N/A with Top Supply	per unit	\$1,099	
- PE	Plain End Toilet Waste 2-3/8" in lieu of standard Gasketed	per unit	N/C	
- PFS	Punched for Hinged Seat by Others	per unit	N/C	
- PH	Paper Holder Integral for Flush Valve Cover Option Only (-FVC)	per unit	\$97	
- TF	Transformer for Time-trol (for up to 12 solenoids)	per unit	\$112	
- TSC	Toilet Shipping Cover	per unit	\$35	
- WO3	Waste Outlet 3" P-Trap N/A with 1.6 GPF	per unit	\$264	

AVAILABILITY LEGEND =====

[IN] = In Stock; [PS] = Partial in Stock; [BO] = Built to Order

[RE] = Requires Engineering; [MOD] = Modified with Engineering



ACORN ENGINEERING COMPANY

LIST PRICE GUIDE

MEMBER OF MORRIS GROUP INTERNATIONAL

TF 800-488-8999 :: PH 626-336-4561 :: info@acorneng.com

L1P00021DM22A

Prices in US\$ Effective November 1, 2022



Price Includes: 14 gage 304 stainless steel and are seamless welded construction. Exterior has a satin finish. Interior has a matte finish. Fixture has a back wall washdown and is optionally available with a continuous flushing rim, which allows for washing all four walls. Corners are coved to facilitate cleaning. P-trap is fully enclosed. Back of fixture is sounddeadened with fire resistant material.

****Additional options available below with additional cost**

****ADA Compliant when mounted per recommended heights and provided with the appropriate flush valve**

MODELS		WT	FT	PRICE	
(RE)	3346-T-1	Top Supply (Exposed)	40#	92.5	\$1,157
(RE)	3346-W-1	Wall Supply (Concealed)	40#	92.5	\$1,157

OPTIONS			PRICE
- EG	Enviro-Glaze Color, Specify: _____	per unit	\$74
- EVSFV	Master-trol Electronic Flush Valve	per unit	POA
- FV	Flush Valve (Mechanical) N/A with ADA	per unit	\$1,124
- FVBO	Flush Valve by Others	per unit	N/C
- FVL	Flush Valve for Top Supply with Lever Handle ADA Compliant	per unit	\$364
- MVCFV	Time-trol Electronic Flush Valve	per unit	POA
- TF	Transformer for Time-trol (for up to 12 solenoids)	each	\$112



Price Includes: 14 gage 304 Stainless Steel Off-Floor, Wall Outlet Blow-out Jet ADA compliant Urinal 13" wide with back wall wash down, fully enclosed 2-1/2" p-trap with gasketed waste outlet

****Additional options available below with additional cost**

****ADA Compliant when mounted per recommended heights and provided with the appropriate flush valve**

3349-W-1 (PICTURED)

MODELS		WT	FT	PRICE	
(RE)	3349-W-1	Wall Supply (Concealed)	40#	92.5	\$3,380

OPTIONS			PRICE
- CFR	Continuous Flushing Rim	per unit	\$117
- EG	Enviro-Glaze Color, Specify: _____	per unit	\$74
- FG	Fourteen Gage	per unit	N/C
- FV	Flush Valve (Mechanical) 3.5 GPF N/A on ADA Units	per unit	\$445
- FVH	Flush Valve (Hydraulic) 3.5 GPF	per unit	\$679
- FVT	Flush Valve Thru Wall Connection for Wall Supply Units	per unit	\$65
- MVCFV	Time-trol Electronic Flush Valve 3.5 GPF	per unit	\$1,099
- TF	Transformer for Time-trol (for up to 12 solenoids)	each	\$112

AVAILABILITY LEGEND =====

[IN] = In Stock; [PS] = Partial in Stock; [BO] = Built to Order

[RE] = Requires Engineering; [MOD] = Modified with Engineering



ACORN ENGINEERING COMPANY

LIST PRICE GUIDE

MEMBER OF MORRIS GROUP INTERNATIONAL

TF 800-488-8999 :: PH 626-336-4561 :: info@acorneng.com

L1P00021DM22A

Prices in US\$ Effective November 1, 2022



Price Includes: 304 Stainless Steel Retro-Fit Assembly for Existing Bradley Foot Operated Wash Fountains; Acorn supplies Spray head, stanchion, upper and lower support castings, tie rods, gasket, Air Control Valve and Pressure Balance Mixing valve

****Additional options available below with additional cost**

3350-H Repl. Head for 4-Station (PICTURED)

MODELS			WT	FT	PRICE
CORNER 2 STATION					
(RE)	- H	Hand Operated		92.5	\$963
(RE)	- SO	Sensor Operated		92.5	\$1,334
CORNER 3 STATION					
(RE)	- H	Hand Operated		92.5	\$1,149
(RE)	- SO	Sensor Operated		92.5	\$1,522
SEMI-CIRCULAR 2 STATION					
(RE)	- H	Hand Operated		92.5	\$963
(RE)	- SO	Sensor Operated		92.5	\$1,334
SEMI-CIRCULAR 3 STATION					
(RE)	- H	Hand Operated		92.5	\$1,265
(RE)	- SO	Sensor Operated		92.5	\$1,675
SEMI-CIRCULAR 4 STATION					
(RE)	- H	Hand Operated		92.5	\$1,480
(RE)	- SO	Sensor Operated		92.5	\$1,875
CIRCULAR 6 STATION					
(RE)	- H	Hand Operated		92.5	\$1,883
(RE)	- SO	Sensor Operated		92.5	\$2,491
CIRCULAR 8 STATION					
(RE)	- H	Hand Operated		92.5	\$2,290
(RE)	- SO	Sensor Operated		92.5	\$2,722
OPTIONS					PRICE
- BAT-SO	Battery Operated (-SO)			per stn	\$81
- CS	Compact Sprayhead (9" diameter, 4" high)			per unit	N/C
- DP-DV	Powder or Lotion/Liquid Soap Dispenser(s)				
	2-Station (1) Dispenser			per unit	\$90
	3-Station or 4-Station (2) Dispensers			per unit	\$177
	6-Station (3) Dispensers			per unit	\$265
	8-Station (4) Dispensers			per unit	\$354
- PDM	Metering Liquid Soap Dispenser			per unit	\$560
- SC	Supply and Vent Cover, Ceiling Height _____			per unit	\$1,229
- ST	Single Temperature Supply			per unit	N/C
- WW	Non-Sectional Control			per unit	N/C

AVAILABILITY LEGEND =====

[IN] = In Stock; [PS] = Partial in Stock; [BO] = Built to Order

[RE] = Requires Engineering; [MOD] = Modified with Engineering



ACORN ENGINEERING COMPANY

LIST PRICE GUIDE

MEMBER OF MORRIS GROUP INTERNATIONAL

TF 800-488-8999 :: PH 626-336-4561 :: info@acorneng.com

L1P00021DM22A

Prices in US\$ Effective November 1, 2022



Price Includes: 304 Stainless Steel Retro-Fit Assembly for Existing Bradley Hand Operated Wash Fountains; Acorn supplies Spray head, stanchion, upper and lower support castings, tie rods, gasket, Air Control Valve and Pressure Balance Mixing valve

****Additional options available below with additional cost**

3351-H Repl. Head for 4-Station (PICTURED)

MODELS			WT	FT	PRICE
CORNER 2 STATION					
(RE)	- H	Hand Operated		92.5	\$1,027
(RE)	- SO	Sensor Operated		92.5	\$1,426
CORNER 3 STATION					
(RE)	- H	Hand Operated		92.5	\$1,265
(RE)	- SO	Sensor Operated		92.5	\$1,675
SEMI-CIRCULAR 2 STATION					
(RE)	- H	Hand Operated		92.5	\$1,059
(RE)	- SO	Sensor Operated		92.5	\$1,469
SEMI-CIRCULAR 3 STATION					
(RE)	- H	Hand Operated		92.5	\$1,265
(RE)	- SO	Sensor Operated		92.5	\$1,675
SEMI-CIRCULAR 4 STATION					
(RE)	- H	Hand Operated		92.5	\$1,480
(RE)	- SO	Sensor Operated		92.5	\$1,875
CIRCULAR 6 STATION					
(RE)	- H	Hand Operated		92.5	\$1,883
(RE)	- SO	Sensor Operated		92.5	\$2,491
CIRCULAR 8 STATION					
(RE)	- H	Hand Operated		92.5	\$2,290
(RE)	- SO	Sensor Operated		92.5	\$2,722
OPTIONS					PRICE
- BAT-SO	Battery Operated (-SO)		per stn		\$95
- CS	Compact Sprayhead (9" diameter, 4" high)		per unit		N/C
- DP/-DV	Powder or Lotion/Liquid Soap Dispenser(s)				
	2-Station (1) Dispenser		per unit		\$90
	3-Station or 4-Station (2) Dispensers		per unit		\$177
	6-Station (3) Dispensers		per unit		\$266
	8-Station (4) Dispensers		per unit		\$354
- PDM	Metering Liquid Soap Dispenser		per unit		\$560
- SC	Supply and Vent Cover, Ceiling Height _____		per unit		\$1,228
- ST	Single Temperature Supply		per unit		N/C
- WW	Non-Sectional Control		per unit		N/C

AVAILABILITY LEGEND =====

[IN] = In Stock; [PS] = Partial in Stock; [BO] = Built to Order

[RE] = Requires Engineering; [MOD] = Modified with Engineering



ACORN ENGINEERING COMPANY

LIST PRICE GUIDE

MEMBER OF MORRIS GROUP INTERNATIONAL

TF 800-488-8999 :: PH 626-336-4561 :: info@acorneng.com

L1P00021DM22A

Prices in US\$ Effective November 1, 2022

IMAGE NOT
AVAILABLE

Price Includes: Terrazzo Spray head Retro fit Assembly with Air Control Valve Assembly with Pressure Balance Mixing Valve to replace existing Acorn Terrazzo units and change out operation

****Additional options available below with additional cost**

MODELS			WT	FT	PRICE
FOR 3603 THREE STATION					
(RE)	3363	- H	Hand Operated	92.5	\$2,123
(RE)	3363	- SO	Sensor Operated	92.5	\$2,536
FOR 3604 FOUR STATION					
(RE)	3364	- H	Hand Operated	92.5	\$2,343
(RE)	3364	- SO	Sensor Operated	92.5	\$2,729
OPTIONS					PRICE
	- BAT-SO	Battery Operated (-SO)		per stn	\$95
	- PDM	Metering Liquid Soap Dispenser		per unit	\$949
	- ST	Single Temperature Supply		per unit	N/C

AVAILABILITY LEGEND =====

[IN] = In Stock; [PS] = Partial in Stock; [BO] = Built to Order

[RE] = Requires Engineering; [MOD] = Modified with Engineering



ACORN ENGINEERING COMPANY

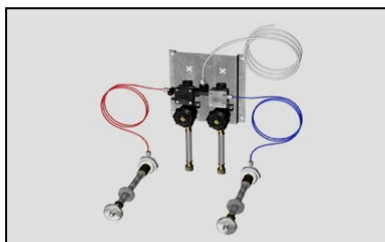
LIST PRICE GUIDE

MEMBER OF MORRIS GROUP INTERNATIONAL

TF 800-488-8999 :: PH 626-336-4561 :: info@acorneng.com

L1P00021DM22A

Prices in US\$ Effective November 1, 2022

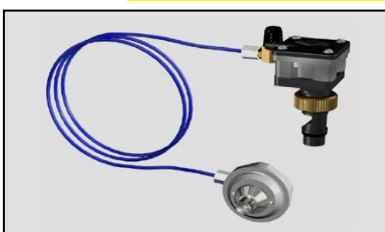


Price Includes: Retro-Fit Air Control Valve Assembly for existing china or aluminum fixtures only with an integral bubbler. Assembly includes Air Control valve assembly on a plate, pushrod activated pushbutton(s) and bubbler connection.

****Additional options available below with additional cost**

3383-M (PICTURED)

MODELS		WT	FT	PRICE
(IN)	3382 Single Temp	N/A	92.5	\$601
(IN)	3383 Hot & Cold	N/A	92.5	\$1,074
OPTIONS				PRICE
- BRS	Brass Valve Body		per btn	\$136
- M	Metering			N/C
- MA2	Manifold Valve to Service (2) units			2X
- MA3	Manifold Valve to Service (3) Units			3X
- MA4	Manifold Valve to Service (4) Units			4X
- MH	Metering Hot Side Only			N/C



Price Includes: Retro-Fit Valve Assembly for specific existing Acorn, Metcraft or Willoughby Models to use on existing valve bodies. Assembly includes Air Control Servomotor and push button assembly

****Additional options available below with additional cost**

3386-M (PICTURED)

MODELS		WT	FT	PRICE
(BO)	3386 Single Temp	N/A	92.5	\$325
(BO)	3387 Hot & Cold	N/A	92.5	\$584
OPTIONS				PRICE
- BRS	Brass Valve Body		per btn	\$136
- M	Metering			N/C
- MH	Metering Hot Side Only			N/C
- RAA	For Acorn Penal-trol 1978 to present - 1-1/8" dia. Escutcheon			N/C
- RAM	For Metcraft Tempus II			N/C
- RAW	For Willoughby Temp 1/Temp 2			N/C

AVAILABILITY LEGEND =====

[IN] = In Stock; [PS] = Partial in Stock; [BO] = Built to Order

[RE] = Requires Engineering; [MOD] = Modified with Engineering



ACORN ENGINEERING COMPANY

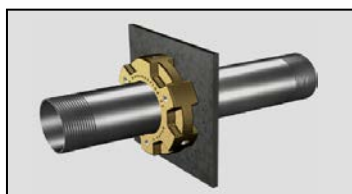
LIST PRICE GUIDE

MEMBER OF MORRIS GROUP INTERNATIONAL

TF 800-488-8999 :: PH 626-336-4561 :: info@acorneng.com

L1P00021DM22A

Prices in US\$ Effective November 1, 2022



Price Includes: Anchoring Assembly for use with flushing inlets and replacement lavatory waste outlet fittings for additional support and anchoring consisting of threaded anchoring pipe, thrust plate and adjusting screws.

3395 (PICTURED)

MODELS		WT	FT	PRICE
(BO) 3395	Anchoring Assembly	N/A	92.5	\$201



R2100 Off-Floor, Wall Outlet, Blowout Jet unit to fit **most** Viterous China existing conditions; refer to on-line submittal for dimensions. **IN STOCK**

MODELS		WT	FT	PRICE
(IN) R2100-T-1	Top Supply (Exposed)	35#	92.5	\$1,642
(IN) R2100-W-1	Wall Supply (Concealed)	35#	92.5	\$1,642



R2105 Off-Floor, Wall Outlet, Siphon Jet unit to fit **most** Viterous China existing conditions; refer to on-line submittal for dimensions. **IN STOCK**

MODELS		WT	FT	PRICE
(IN) R2105-T-1	Top Supply (Exposed)	35#	92.5	\$1,789
(IN) R2105-W-1	Wall Supply (Concealed)	35#	92.5	\$1,789



R2115 On-Floor, Wall Outlet, Siphon Jet unit to fit **most** Viterous China existing conditions; refer to on-line submittal for dimensions. **IN STOCK**

MODELS		WT	FT	PRICE
(IN) R2115-T-2	Top Supply (Exposed)	45#	92.5	\$1,755
(IN) R2115-W-2	Wall Supply (Concealed)	45#	92.5	\$1,755



R2141 On-Floor, Floor Outlet, Siphon Jet unit to fit **most** Viterous China existing conditions; refer to on-line submittal for dimensions. **IN STOCK**

MODELS		WT	FT	PRICE
(IN) R2141-T-3	Top Supply (Exposed)	45#	92.5	\$1,825
(IN) R2141-W-3	Wall Supply (Concealed)	45#	92.5	\$1,825

AVAILABILITY LEGEND =====

[IN] = In Stock; [PS] = Partial in Stock; [BO] = Built to Order

[RE] = Requires Engineering; [MOD] = Modified with Engineering