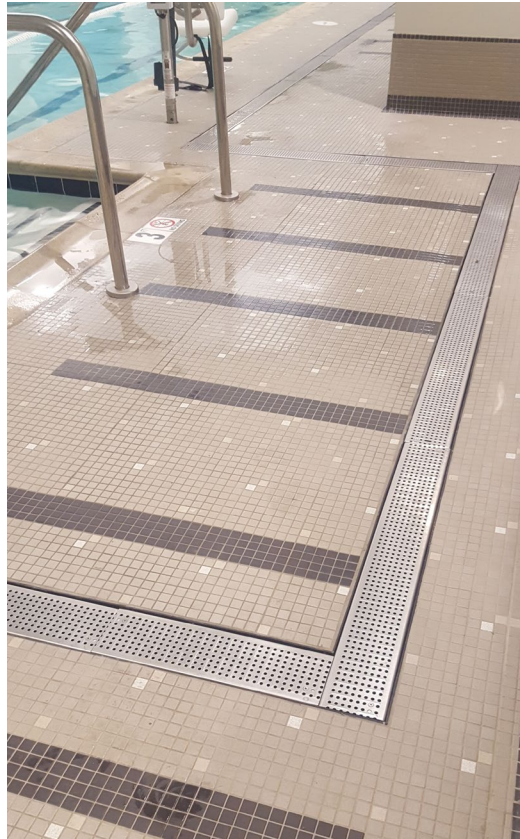




TRENCH DRAIN PRICE GUIDE (2025) *TX*

Effective Date: April 21, 2025



ENVIRO-FLO[®]
STAINLESS STEEL
FIBERGLASS & POLYMER CONCRETE

Jay R. Smith Mfg. Co.

Member of Morris Group International

P.O. BOX 3237 • MONTGOMERY, AL 36109-0237 • Tel: (334) 277-8520 • www.jrsmith.com

SMITH TRENCH DRAIN DEPARTMENT

1-800-GO-SMITH

Jim DelRe - Sr. VP Sales

Pricing/Technical Assistance, Competitive Information, Product Specifications

Product/Market Development

334-398-4921

jim.delre@jrsmith.com

Pace Josey — Manager Trench Drains

Technical Assistance, Product/Custom Layouts, Quotations, Specifications

Ext. 7225

pace.josey@jrsmith.com

Anna Fenn — Trench Drain Customer Service Specialist

Order Entry, Product Availability, Shipping Inquiries

Ext. 7235

anna.fenn@jrsmith.com

Robin McMillan-Sr. Trench Drain Customer Service

Order Entry, Product Availability, Shipping Inquiries

Ext. 7311

robin.mcmillan@jrsmith.com

Mike Donley —Sr. Trench Drain Sales Engineer

Technical Assistance, Product/Custom Layouts, Quotations, Order Entry

Ext. 7283

mike.donley@jrsmith.com

William Simpson - Jr. Trench Drain Sales Engineer

Technical Assistance, Product/Custom Layouts, Quotations

Ext. 7349

william.simpson@jrsmith.com

Al Bonner - Jr. Trench Drain Sales Engineer

Technical Assistance, Product/Custom Layouts, Quotations

Ext. 7229

al.bonner@jrsmith.com



Jay R. Smith Mfg. Co.

Member of Morris Group International

P.O. BOX 3237 • MONTGOMERY, AL 36109-0237 • Tel: (334) 277-8520 • www.jrsmith.com

TABLE OF CONTENTS

ENVIRO-FLO® TRENCH DRAIN SYSTEMS

LOAD CLASS A: LIGHT DUTY TRENCH DRAINS

Galvanized.....	1
Stainless Steel.....	1
Polypropylene.....	1-2

LOAD CLASS C: HEAVY DUTY TRENCH DRAINS

Galvanized.....	2-3
Stainless Steel.....	3
Ductile.....	3-4
Resin.....	4

LOAD CLASS E: EXTRA HEAVY DUTY

Ductile Iron.....	4
Locking Device Specification.....	5

9930 and 9931 GRATES

Load Class A: Light Duty.....	5
Load Class C: Heavy Duty.....	6
Load Class E: Extra Heavy Duty.....	6
9930 and 9931 Accessories.....	7

9940 ZIP TRENCH™ 6" WIDE TRENCH DRAIN SYSTEMS.....	8
---	----------

9960 ZIP TRENCH™ 12" WIDE TRENCH DRAIN SYSTEMS.....	13
--	-----------

9940/9960 Catch Basins.....	14
------------------------------------	-----------

STAINLESS STEEL TRENCH DRAIN SYSTEMS

9660 SERIES TRENCH DRAIN SYSTEM

Load Class A: Light Duty Systems.....	15
Load Class C: Heavy Duty Systems.....	15-16
Load Class E: Extra Heavy Duty.....	17

9660 SERIES GRATING AND CHANNELS

Load Class A: Light Duty Grates.....	18
Load Class C: Heavy Duty Grates.....	18
Load Class E: Extra Heavy Duty Grates & Channels.....	19

9660 ACCESSORIES.....	20
------------------------------	-----------

9670 12" Wide Stainless steel Trench Drain.....	20
---	----

9671 3/4" Wide Stainless Steel Slot Drain.....	20
--	----

9666 and 9667 SERIES STAINLESS STEEL SHOWER DRAINS.....	21
--	-----------

9675 STAINLESS STEEL FLOOR TROUGH DRAIN.....	22
---	-----------

9678 STAINLESS STEEL THRESHOLD DRAIN.....	23
--	-----------

9679 STAINLESS STEEL THRESHOLD DRAIN.....	23
--	-----------

TABLE OF CONTENTS

FIBERGLASS & POLYMER CONCRETE

Presloped Fiberglass Trench Drain Systems – 10” and 12” Wide

9812 Series 10” Wide Trench Drain Systems.....	24
9812 Series Grates, Catch Basins and Accessories	24-25
9872 Series 12” Wide Trench Drain Systems.....	26
9812 Series Outlet, End Caps and Accessories.....	25-26
9812-LC Series Frame and Grate System	25
9895 Series Channels for Medium Capacity Trench Drains Channels.....	27
9895-CB Series Catch Basins	28
9832 Series Neutral Channels for Restricted Installation Applications.....	29
9833, 9835 Series.....	29
9836 Series 1 Meter Shallow channel with Edge Rail	30

For Special Applications, Including Neutral Channels, Sump Boxes, and Oil Separators

9846, 9847, 9848 Series Modular Sump Boxes	30
9857 Oil Separators.....	30
9877 Series Channel w/Integral Ductile Iron Frame.....	31

Precast Polymer Concrete Trench Drain Systems–6” Wide Channels in Polyester Material

9805 Series Channels w/Integral Ductile Iron Rail & Ductile Iron ADA Grate.....	32
---	----

9870 Grate Systems for 6” Wide Channel Systems

Class “A” Rated Grates.....	33
Class “C” Rated Grates.....	33-34
DIN Class “E” Rated Grates.....	34
Grate Accessories.....	35

Presloped, Precast Polymer Concrete Trench Drain Systems- 10” Wide

9806 Series Neutral Shallow Channel w/ Integral Ductile Iron Rail & Ductile Iron Slotted Grate	36
9878 Series with Integral Ductile Iron Frames	37
9880 Series Grates for 10” Wide Systems.....	38
9896 Series with Integral Metal Rail	39
9898 Series with Integral Metal Rail	39

Presloped, Precast Polymer Concrete Trench Drain Systems- 14” Wide

9807 Series Neutral Shallow Channel w/ Integral Ductile Iron Rail & Ductile Iron Slotted ADA Grate.....	40
9879 Series with Integral Ductile Iron Rail Edge & Ductile Iron Grates	40
9890 Series Grates.....	41
9897 Series Channel Slope System with Metal Rails.....	41-42
9899 Series Shallow Neutral Channel w/ Integral Metal Edge Rail	42

Accessories and Miscellaneous

9852 Channel Chair	43
9853 Shovel Head	43
9854 Strainer	43
Fiberglass or Polymer Joint Sealant for Polyester	43

9930 & 9931 ENVIRO-FLO TRENCH DRAIN SYSTEMS



Load Class A: Light Duty

EN 1433, Class A—3,500 lbs., 70 psi Pedestrian, Wheel Chair & Bicycle Traffic

Figure Number	Description	-LD (2 per m)	List Price	List Price/Ft*
GALVANIZED GRATES				
9930-GP	1 m Sloped Channel w/Perforated Galvanized Steel Grate & LD	QL	\$360.80	\$109.90
9930-N-GP	1 m Neutral Channel w/Perforated Galvanized Steel Grate & LD	QL	\$360.80	\$109.90
9930-N-5-GP	1/2 m Neutral Channel w/Perforated Galvanized Steel Grate & LD	QL	\$233.80	\$142.60
9935-GP	1/2 m Catch Basin w/Perforated Galvanized Steel Grate & LD	QL	\$533.10	
9930-G	1 m Sloped Channel w/Slotted Galvanized Steel Grate & LD	QL	\$334.80	\$102.00
9930-N-G	1 m Neutral Channel w/Slotted Galvanized Steel Grate & LD	QL	\$334.80	\$102.00
9930-N-5-G	1/2 m Neutral Channel w/Slotted Galvanized Steel Grate & LD	QL	\$211.60	\$127.50
9935-G	1/2 m Catch Basin w/Slotted Galvanized Steel Grate & LD	QL	\$510.90	

STAINLESS STEEL GRATES				
9930-SSADA	1 m Sloped Channel w/Slotted ADA Compliant SS Grate & LD	QL	\$1,237.00	\$377.10
9930-N-SSADA	1 m Neutral Channel w/Slotted ADA Compliant SS Grate & LD	QL	\$1,237.00	\$377.10
9930-N-5-SSADA	1/2 m Neutral Channel w/Slotted ADA Compliant SS Grate & LD	QL	\$819.50	\$499.70
9935-SSADA	1/2 m Catch Basin w/Slotted ADA Compliant SS Grate & LD	QL	\$1,118.90	
9930-SS	1 m Sloped Channel w/Slotted SS Grate & LD	QL	\$505.20	\$153.90
9930-N-SS	1 m Neutral Channel w/Slotted SS Grate & LD	QL	\$505.20	\$153.90
9930-N-5-SS	1/2 m Neutral Channel w/Slotted SS Grate & LD	QL	\$326.70	\$199.10
9935-SS	1/2 m Catch Basin w/Slotted SS Grate & LD	QL	\$626.10	
9930-SSPA	1 m Sloped Channel w/Perforated SS Grate & LD	QL	\$537.10	\$148.90
9930-N-SSPA	1 m Neutral Channel w/Perforated SS Grate & LD	QL	\$537.10	\$148.90
9930-N-5-SSPA	1/2 m Neutral Channel w/Perforated SS Grate & LD	QL	\$339.50	\$188.50
9935-SSPA	1/2 m Catch Basin w/Perforated SS Grate & LD	QL	\$638.80	

POLYPROPYLENE GRATES				
9930-HPP	1 m Sloped Channel w/Heelproof Poly Grate & LD	814LD	\$517.30	\$157.80
9930N-N-HPP	1 m Neutral Channel w/Heelproof Poly Grate & LD	814LD	\$517.30	\$157.80
9930-N-5-HPP	1/2 m Neutral Channel w/Heelproof Poly Grate & LD	814LD	\$297.90	\$181.70
9935-HPP	1/2 m Catch Basin w/Heelproof Poly Grate & LD	814LD	\$597.20	

Chem-Caulk 915 Sealant (**one** tube joins approximately **seven** 9930 channel sections)

* List price per foot for estimating only, final price may vary as meters are 3.28 feet and is such why the final price may vary.

9930 & 9931 ENVIRO-FLO TRENCH DRAIN SYSTEMS



Load Class A: Light Duty

EN 1433, Class A—3,500 lbs., 70 psi
Pedestrian, Wheel Chair & Bicycle Traffic

Figure Number	Description	-LD (2 per m)	List Price	List Price/Ft*
POLYPROPYLENE GRATES				
9930-PADAB	1 m Sloped Channel w/Black ADA Compliant Polypropylene Grt&LD	QL	\$430.40	\$131.30
9930-N-PADAB	1 m Neutral Channel w/Black ADA Compliant Polypropylene Grt&LD	QL	\$430.40	\$131.30
9930-N-5-PADAB	1/2 m Neutral Channel w/Black ADA Compliant Polypropylene Grt & LD	QL	\$254.50	\$155.10
9935-PADAB	1/2 m Catch Basin w/Black ADA Compliant Polypropylene Grt&LD	QL	\$553.80	
9930-PADAG	1 m Sloped Channel w/Gray ADA Compliant Polypropylene Grate & LD	QL	\$435.80	\$132.90
9930-N-PADAG	1 m Neutral Channel w/Gray ADA Compliant Polypropylene Grate & LD	QL	\$435.80	\$132.90
9930N-5-PADAG	1/2 m Neutral Channel w/Gray ADA Compliant Polypropylene Grt & LD	QL	\$257.20	\$156.90
9935-PADAG	1/2 m Catch Basin w/Gray ADA Compliant Polypropylene Grt & LD	QL	\$556.50	

Load Class C: Heavy Duty

EN 1433, Class C—56,000 lbs., 1,162 psi
Commercial Pneumatic Tire Traffic Patterns, Forklifts & Tractor
Trailers; Cast Grates only recommended for 9931

Figure Number	Description	-LD (2 per m)	List Price	List Price/Ft*
GALVANIZED GRATES				
9930-GPHD	1 m Sloped Channel w/HD Perforated Galv Steel Grate & LD	QL	\$434.10	\$145.60
9930-N-GPHD	1 m Neutral Channel w/HD Perforated Galv Steel Grate & LD	QL	\$434.10	\$145.60
9930-N-5-GPHD	1/2 m Neutral Channel w/HD Perforated Galv Steel Grate & LD	QL	\$267.00	\$179.00
9935-GPHD	1/2 m Catch Basin w/HD Perforated Galv Steel Grate & LD	QL	\$566.20	

Chem-Caulk 915 Sealant (**one** tube joins approximately **seven** 9930 channel sections)

* List price per foot for estimating only, final price may vary as meters are 3.28 feet and is such why the final price may vary.

9930 & 9931 ENVIRO-FLO TRENCH DRAIN SYSTEMS



Load Class C: Heavy Duty

**EN 1433, Class C—56,000 lbs., 1,162 psi
Commercial Pneumatic Tire Traffic Patterns, Forklifts & Tractor
Trailers; Cast Grates only recommended for 9931**

Figure Number	Description	-LD (2 per m)	List Price	List Price/Ft*
GALVANIZED GRATES				
9930-GHD	1 m Sloped Channel w/Heavy Duty Slotted Galv Steel Grate & LD	QL	\$385.20	\$117.30
9930-N-GHD	1 m Neutral Channel w/Heavy Duty Slotted Galv Steel Grate & LD	QL	\$385.20	\$117.30
9930-N-5-GHD	1/2 m Neutral Channel w/Heavy Duty Slotted Galv Steel Grate & LD	QL	\$256.90	\$156.42
9935-GHD	1/2 m Catch Basin w/Heavy Duty Slotted Galv Steel Grate & LD	QL	\$556.20	

STAINLESS STEEL GRATES				
9930-SSM	1 m Sloped Channel w/Heavy Duty SS Mesh Grate & LD	QL	\$1,075.10	\$327.70
9930-N-SSM	1 m Neutral Channel w/Heavy Duty SS Mesh Grate & LD	QL	\$1,075.10	\$327.70
9930-N-5-SSM	1/2 m Neutral Channel w/Heavy Duty SS Mesh Grate & LD	QL	\$738.80	\$450.40
9935-SSM	1/2 m Catch Basin w/Heavy Duty SS Mesh Grate & LD	QL	\$1,038.10	
9930-SSHD	1 m Sloped Channel w/Heavy Duty Slotted SS Grate & LD	QL	\$779.70	\$237.80
9930-N-SSHD	1 m Neutral Channel w/Heavy Duty Slotted SS Grate & LD	QL	\$779.70	\$237.80
9930-N-5-SSHD	1/2 m Neutral Channel w/Heavy Duty Slotted SS Grate & LD	QL	\$494.90	\$301.80
9935-SSHD	1/2 m Catch Basin w/Heavy Duty Slotted SS Grate & LD	QL	\$794.20	
9930-SSP	1 m Sloped Channel w/Heavy Duty Perforated SS Grate & LD	QL	\$853.10	\$260.10
9930-N-SSP	1 m Neutral Channel w/Heavy Duty Perforated SS Grate & LD	QL	\$853.10	\$260.10
9930-N-5-SSP	1/2 m Neutral Channel w/Heavy Duty Perforated SS Grate & LD	QL	\$514.80	\$313.80
9935-SSP	1/2 m Catch Basin w/Heavy Duty Perforated SS Grate	QL	\$814.20	

DUCTILE IRON GRATES				
9930-MD	1 m Sloped Channel w/Mosaic Pattern DI Grates & LD	QL	\$493.10	\$150.30
9930-N-MD	1 m Neutral Channel w/Mosaic Pattern DI Grates & LD	QL	\$493.10	\$150.30
9930-N-5-MD	1/2 m Neutral Channel w/Mosaic Pattern DI Grate & LD	QL	\$285.80	\$174.20
9935-MD	1/2 m Catch Basin w/Mosaic Pattern DI Grate & LD	QL	\$585.10	

Chem-Caulk 915 Sealant (**one** tube joins approximately **seven** 9930 channel sections)

* List price per foot for estimating only, final price may vary as meters are 3.28 feet and is such why the final price may vary.

9930 & 9931 ENVIRO-FLO TRENCH DRAIN SYSTEMS



Load Class C: Heavy Duty

EN 1433, Class C—56,000 lbs., 1,162 psi
Commercial Pneumatic Tire Traffic Patterns, Forklifts & Tractor
Trailers; Cast Grates only recommended for 9931

-LD

Figure Number	Description	(2 per m)	List Price	List Price/Ft*
DUCTILE IRON GRATES				
9930-DGC	1 m Sloped Channel w/ Class C Ductile Iron Slotted Grate & LD	QL	\$452.60	\$138.10
9930-N-DGC	1 m Neutral Channel w/ Class C Ductile Iron Slotted Grate & LD	QL	\$452.60	\$138.10
9930-N-5-DGC	1/2 m Neutral Channel w/ Class C Ductile Iron Slotted Grate & LD	QL	\$265.70	\$162.20
9935-DGC	1/2 m Catch Basin w/ Class C Ductile Iron Slotted Grate & LD	QL	\$564.90	
9930-MADAC	1 m Sloped Channel w/ADA Compliant Class C DI Slotted Grate&LD	QL	\$480.30	\$142.50
9930-N-MADAC	1 m Neutral Channel w/ADA Compliant Class C DI Slotted Grate&LD	QL	\$480.30	\$142.50
9930-N-5-MADAC	1/2 m Neutral Channel w/ADA Compliant Class C DI Slotted Grt & LD	QL	\$279.40	\$166.50
9935-MADAC	1/2 m Catch Basin w/ADA Compliant Class C DI Slotted Grate & LD	QL	\$578.80	

RESIN COMPOSITE GRATES				
9930-RC	1 m Sloped Channel w/Slotted Resin Composite Grates & LD	QL	\$468.90	\$142.90
9930-N-RC	1 m Neutral Channel w/Slotted Resin Composite Grates & LD	QL	\$468.90	\$142.90
9930-N-5-RC	1/2 m Neutral Channel w/Slotted Resin Composite Grate & LD	QL	\$273.70	\$166.90
9935-RC	1/2 m Catch Basin w/Slotted Resin Composite Grate & LD	QL	\$573.00	

Load Class E: Extra Heavy Duty

EN 1433, Class E—135,000 lbs., 2,788 psi
Commercial Solid Tire Traffic Patterns, Forklifts & Impacts
from Steel Struts/Metal Wheel

DUCTILE IRON GRATES				
9931-M	1 m Sloped Channel w/Extra HD Frame, Slotted DI Grates & LD	QL	\$633.90	\$193.30
9931-N-M	1 m Neutral Channel w/Extra HD Frame, Slotted DI Grates & LD	QL	\$633.90	\$193.30
9931-N-5-M	1/2 m Neutral Channel w/Extra HD Frame, Slotted DI Grate & LD	QL	\$364.90	\$222.40
9936-M	1/2 m Catch Basin w/Extra Hvy Duty Frame, Slotted DI Grate & LD	QL	\$664.20	
9931-ADA	1 m Sloped Channel w/Extra HD Frame, Slotted DI ADA Grts & LD	QL	\$633.90	\$193.30
9931-N-ADA	1 m Neutral Channel w/Extra HD Frame, Slotted DI ADA Grts & LD	QL	\$633.90	\$193.30
9931-N-5-ADA	1/2 m Neutral Channel w/Extra HD Frame, Slotted DI ADA Grt & LD	QL	\$364.90	\$244.70
9936-ADA	1/2 m Catch Basin w/Extra HD Frame, Slotted DI ADA Grt & LD	QL	\$664.20	

Chem-Caulk 915 Sealant (**one** tube joins approximately **seven** 9930 channel sections)

* List price per foot for estimating only, final price may vary as meters are 3.28 feet and is such why the final price may vary.

9930 & 9931 ENVIRO-FLO TRENCH DRAIN SYSTEMS



Locking Device Specification (All Locking Bolts are 5/16 x 18 Thread)

Figure Number	Description	List Price
QL	QuickLok™ Securing Device, Stainless Steel Grate Lug and Spring Clip Type Locking Bar	\$13.70
814LD	2" Stainless Steel Socket Head Bolt with Stainless Steel Locking Bar	\$38.40

Grates Specification for 9930 & 9931 Series Channels/Catch Basins

Load Class A: Light Duty

EN 1433, Class A—3,500 lbs., 70 psi
Pedestrian, Wheel Chair & Bicycle Traffic

Figure Number	Description	Length (m)	Wt (lbs.)		Grate Only		Grate w/ LD	
					List ea.	List / Ft.*	List ea.	List / Ft.*
9870-410-GP	Galvanized Steel Perforated	1	4.4	QL	\$94.40	\$28.80	\$121.80	\$37.10
		1/2	2.2	QL	\$61.30	\$37.30	\$75.00	\$45.60
9870-420-G	Galvanized Steel Slotted	1	3.5	QL	\$68.40	\$20.80	\$95.80	\$29.20
		1/2	1.7	QL	\$39.10	\$23.80	\$52.80	\$32.20
9870-447-SSADA	SS Slotted ADA Compliant	1	3.5	QL	\$970.60	\$295.80	\$998.00	\$304.30
		1/2	1.7	QL	\$647.10	\$394.60	\$660.80	\$403.00
9870-450-SS	SS Slotted	1	6.0	QL	\$238.70	\$72.80	\$266.10	\$81.20
		1/2	3.0	QL	\$154.00	\$94.10	\$167.70	\$102.30
9870-451-SSPA	SS Perforated	1	5.5	QL	\$271.30	\$82.90	\$298.70	\$91.00
		1/2	2.8	QL	\$167.00	\$102.00	\$180.70	\$110.30
9930-491-HPP	Black Polypropylene, HP	1/2	4.0	814LD	\$100.70		\$139.10	
9870-494-PADAB	Black Polypropylene, ADA Compliant	1/2	6.5	QL	\$82.00	\$50.10	\$95.70	\$58.30
9870-494-PADAG	Gray Polypropylene, ADA Compliant	1/2	6.5	QL	\$84.70	\$51.60	\$98.40	\$60.00

* List price per foot for estimating only, final price may vary as meters are 3.28 feet and is such why the final price may vary.

Grates Specification for 9930 & 9931 Series Channels/Catch Basins

Load Class C: Heavy Duty

EN 1433, Class C—56,000 lbs., 1,162 psi
Commercial Pneumatic Tire Traffic Patterns, Forklifts & Tractor
Trailers; Cast Grates only recommended for 9931

Figure Number	Description	Length (m)	Weight (lbs.)		Grate Only		Grate w/ LD	
					List ea.	List / Ft.*	List ea.	List / Ft.*
9870-411-GPHD	Galv Steel Perf (Reinforced)	1	10.0	QL	\$167.60	\$51.10	\$195.00	\$59.40
		1/2	5.0	QL	\$94.40	\$58.10	\$108.10	\$65.80
9870-425-GHD	Galv Steel Slotted(Reinforced)	1	8.5	QL	\$118.70	\$36.20	\$146.10	\$44.60
		1/2	4.2	QL	\$84.40	\$51.50	\$98.10	\$59.70
9870-430-SSM	SS Heavy Duty Mesh	1	5.5	QL	\$808.70	\$246.60	\$836.10	\$254.90
		1/2	2.8	QL	\$566.30	\$345.20	\$580.00	\$353.70
9870-455-SSHD	SS Slotted, Heavy Duty	1	9.0	QL	\$513.30	\$156.60	\$540.70	\$164.80
		1/2	4.5	QL	\$322.50	\$196.60	\$336.20	\$204.90
9870-462-DGC	Ductile Iron Slotted (Class C)	1/2	10.5	QL	\$93.40	\$57.00	\$107.10	\$65.40
9870-465-SSP	SS Perforated (Reinforced)	1	9.0	QL	\$586.70	\$178.90	\$611.10	\$190.70
9870-479-MD	Mosaic Pattern HD DI	1/2	10.0	QL	\$113.30	\$69.00	\$127.00	\$77.40
9870-487-MADAC	ADA Compliant DI Longitudinal (Class C)	1/2	13.8	QL	\$93.40	\$57.00	\$107.10	\$65.40
9870-492-RC	Resin Composite Slotted	1/2	4.0	QL	\$101.20	\$61.80	\$114.90	\$70.10

Load Class E: Extra Heavy Duty

EN 1433, Class E—135,000 lbs., 2,788 psi
Commercial Solid Tire Traffic Patterns, Forklifts & Impacts from
Steel Struts/Metal Wheel

Figure Number	Description	Length (m)	Wt. (lbs.)		Grate Only		Grate w/ LD	
					List ea.	List / Ft.*	List ea.	List / Ft.*
9870-461-M	Ductile Iron Slotted	1/2	10.5	QL	\$100.70	\$61.30	\$114.40	\$69.50
9870-478-MADA	DI Longitudinal ADA	1/2	13.8	QL	\$100.70	\$61.30	\$114.40	\$69.50

* List price per foot for estimating only, final price may vary as meters are 3.28 feet and is such why the final price may vary.

Accessories for 9930 & 9931 Series Channels/Catch Basins

Figure Number	Description	List Price
9930-CLG	1 meter Sloped Replacement Channel (less Grate)	\$239.20
9930-CLG-N	1 meter Neutral Replacement Channel (less Grate)	\$239.20
9930-CLG-N-5	1/2 meter Neutral Replacement Channel (less Grate)	\$158.90
9931-CLG	1 meter Neutral replacement Channel w/Steel Heavy Duty Frame (less Grate)	\$432.60
9931-CLG-N	1 meter Neutral replacement Channel w/Steel Heavy Duty Frame (less Grate)	\$432.60
9931-CLG-N-5	1/2 meter Neutral replacement Channel w/Steel Heavy Duty Frame (less Grate)	\$264.30
9935-CBLG	Replacement Catch Basin (1/2 m less Grate)	\$458.20
9936-CBLG	Replacement Catch Basin w/Steel Heavy Duty Frame (1/2 m less Grate)	\$563.60
-ES	Universal (Male) End Cap For Shallow End of Channel (less Frame)	\$21.80
-ED	Universal (Female) End Cap For Deep End of Channel (less Frame)	\$21.80
-H4	4" Horizontal Outlet Cap	\$38.70
-BO	4" No-hub bottom outlet adaptor	\$38.70
-TA	Tee adaptor	\$29.90
-MC	Double male coupling	\$16.20
-EF-5	1/2 meter Extra Heavy Duty Closing End Frame	\$105.40
-F-5	1/2 meter Extra Heavy Duty Frame Only for 9931 Channel or Catch Basin	\$81.20
-EF-1	1 meter Extra Heavy Duty End Frame Only for 9931 Channel	\$202.00
-F-1	1 meter Extra Heavy Duty Frame Only for 9931 Channel	\$193.40
-BP	Plastic Sediment Bucket for Catch Basin	\$138.00
-SSRHD-1	1 meter Extra Heavy Duty 9931 Stainless Steel Frame	\$659.50
-SSRHDEF-1	1 meter Extra Heavy Duty 9931 Stainless Steel Frame with End Plate	\$667.20
-SSRHD-5	1/2 meter Extra Heavy Duty Stainless Steel Frame Only for 9931 Channel or Catch Basin	\$428.80
-SSRHDEF-5	1/2 meter Extra Heavy Duty Stainless Steel Frame with End Plate Only for 9931 Channel or Catch Basin	\$436.50
-SSR	SS Rails, Add to 9930 Series per meter (load class "A") (Pair) See above for 9931 SS Frame	\$217.40
-SSRCB	SS Rails for Catch Basin, Add to 9935 Series (load class "A") (Pair) See above for 9931 SS Frame	\$206.80
-SSREC	SS Rails for End Cap	\$48.20
9849-NS	Rante-Arrow Installation Device	\$58.20
37251-45-6	Top Rante Arrow	\$20.90
9853	Shovel Head Shaped to match the interior bottom of trench	\$145.10
9854	Strainer--Prevents debris from entering the sewer system.	\$96.80
9859	QuickLok™ Grate Lifting Tool	\$48.80
Chem-Caulk 915	Sealant (one tube joins approximately seven 9930 channel sections)	\$37.00

9940 ZIP TRENCH™ 6" WIDE TRENCH DRAIN SYSTEMS



Load Class A: Light Duty

EN 1433, Class A—3,500 lbs., 70 psi
Pedestrian, Wheel Chair & Bicycle Traffic

Figure Number	Description	List Price	List Price/Ft*
GALVANIZED GRATES			
9940-GP	3 m Sloped Channel w/ Perforated Galv Steel Grate, Painted Mild Steel Frame & LD	\$1,515.40	\$154.00
9940-N-GP	3 m Neutral Channel w/ Perforated Galv Steel Grate, Painted Mild Steel Frame & LD	\$1,515.40	\$154.00
9940-G	3 m Sloped Channel w/ Slotted Galvanized Steel Grate, Painted Mild Stl Frame & LD	\$1,437.20	\$146.10
9940-N-G	3 m Neutral Channel w/ Slotted Galv Steel Grate, Painted Mild Stl Frame & LD	\$1,437.20	\$146.10

STAINLESS STEEL GRATES			
9940-SSADA	3 m Sloped Channel w/ Slotted ADA Compliant SS Grate, Painted Mild Stl Frm & LD	\$4,143.90	\$421.10
9940-N-SSADA	3 m Neutral Channel w/ Slotted ADA Compliant SS Grate, Painted Mild Stl Frm & LD	\$4,143.90	\$421.10
9940-SS	3 m Sloped Channel w/ Slotted SS Grate, Painted Mild Steel Frame & LD	\$1,948.40	\$198.00
9940-N-SS	3 m Neutral Channel w/ Slotted SS Grate, Painted Mild Steel Frame & LD	\$1,948.40	\$198.00
9940-SSPA	3 m Sloped Channel w/ Perforated SS Grate, Painted Mild Steel Frame & LD	\$2,046.00	\$207.90
9940-N-SSPA	3 m Neutral Channel w/ Perforated SS Grate, Painted Mild Steel Frame & LD	\$2,046.00	\$207.90

POLYPROPYLENE GRATES				
9940-HPP	3 m Sloped Channel w/HP Poly Grate, Painted Mild Stl Frame & LD	814	\$2,230.80	\$211.90
9940N-N-HPP	3 m Neutral Channel w/ HP Poly Grate, Painted Mild Stl Frame & LD	814	\$2,230.80	\$211.90
9940-PADAB	3 m Sloped Channel w/Black ADA Compliant Polypropylene Grt, Painted Mild Stl Frm&LD		\$1,724.00	\$175.30
9940-N-PADAB	3 m Neutral Channel w/Black ADA Compliant Polypropylene Grt, Painted Mild Stl Frm&LD		\$1,724.00	\$175.30
9940-PADAG	3 m Sloped Channel w/Gray ADA Compliant Polypropylene Grt, Painted Mild Stl Frm&LD		\$1,740.50	\$176.90
9940-N-PADAG	3 m Neutral Channel w/Gray ADA Compliant Polypropylene Grt, Painted Mild Stl Frm&LD		\$1,740.50	\$176.90

Chem-Caulk 915 Sealant (**one** tube joins approximately **four** 9940 channel sections)

The 9940 Frame comes with the Locking Device Already Assembled

* List price per foot for estimating only, final price may vary as meters are 3.28 feet and is such why the final price may vary.

9940 ZIP TRENCH™ 6" WIDE TRENCH DRAIN SYSTEMS



Load Class C: Heavy Duty

EN 1433, Class C—56,000 lbs., 1,162 psi
Commercial Pneumatic Tire Traffic Patterns, Forklifts & Tractor
Trailers; Cast Grates only recommended for 9931

GALVANIZED GRATES

Figure Number	Description	List Price	List Price/Ft*
9940-GPHD	3 m Sloped Channel w/ HD Perforated Galv Steel Grate, Painted Mild Stl Frame & LD	\$1,735.20	\$176.40
9940-N-GPHD	3 m Neutral Channel w/ HD Perforated Galv Steel Grate, Painted Mild Stl Frame & LD	\$1,735.20	\$176.40
9940-GHD	3 m Sloped Channel w/ HD Slotted Galv Steel Grate, Painted Mild Steel Frame & LD	\$1,588.30	\$161.40
9940-N-GHD	3 m Neutral Channel w/ HD Slotted Galv Steel Grate, Painted Mild Steel Frame & LD	\$1,588.30	\$161.40

STAINLESS STEEL GRATES

9940-SSM	3 m Sloped Channel w/ Heavy Duty SS Mesh Grate, Painted Mild Steel Frame & LD	\$3,658.10	\$371.70
9940-N-SSM	3 m Neutral Channel w/ Heavy Duty SS Mesh Grate, Painted Mild Steel Frame & LD	\$3,658.10	\$371.70
9940-SSHD	3 m Sloped Channel w/ Heavy Duty Slotted SS Grate, Painted Mild Steel Frame & LD	\$2,772.00	\$281.80
9940-N-SSHD	3 m Neutral Channel w/ Heavy Duty Slotted SS Grate, Painted Mild Steel Frame & LD	\$2,772.00	\$281.80
9940-SSP	3 m Sloped Channel w/ HD Perforated SS Grate, Painted Mild Steel Frame & LD	\$2,992.20	\$304.10
9940-N-SSP	3 m Neutral Channel w/ HD Perforated SS Grate, Painted Mild Steel Frame & LD	\$2,992.20	\$304.10

DUCTILE IRON GRATES

Figure Number	Description	List Price	List Price/Ft*
9940-MD	3 m Sloped Channel w/ Mosaic Pattern DI Grate, Painted Mild Steel Frame & LD	\$1,912.10	\$194.30
9940-N-MD	3 m Neutral Channel w/ Mosaic Pattern DI Grate, Painted Mild Steel Frame & LD	\$1,912.10	\$194.30
9940-DGC	3 m Sloped Channel w/ Frame, DI Grate Load Class C, Painted Mild Stl Frame & LD	\$1,790.60	\$182.20
9940-N-DGC	3 m Neutral Channel w/ Frame, Ductile Iron Grates, Painted Mild Stl Frame & LD	\$1,790.60	\$182.20
9940-MADAC	3 m Sloped Channel w/ Frame, Ductile Iron ADA Grate, Painted Mild Stl Frame & LD	\$1,873.80	\$182.20
9940-N-MADAC	3 m Sloped Channel w/ Frame, Ductile Iron ADA Grate, Painted Mild Stl Frame & LD	\$1,873.80	\$182.20

RESIN COMPOSITE GRATES

9940-RC	3 m Sloped Channel w/ Slotted Resin Composite Grate, Painted Mild Stl Frame & LD	\$1,839.50	\$186.90
9940-N-RC	3 m Neutral Channel w/ Slotted Resin Composite Grate, Painted Mild Stl Frame & LD	\$1,839.50	\$186.90

Chem-Caulk 915 Sealant (**one** tube joins approximately **four** 9940 channel sections)

* List price per foot for estimating only, final price may vary as meters are 3.28 feet and is such why the final price may vary.

9940 ZIP TRENCH™ 6" WIDE TRENCH DRAIN SYSTEMS



Load Class E: Extra Heavy Duty

EN 1433, Class E—135,000 lbs., 2,788 psi
Commercial Solid Tire Traffic Patterns, Forklifts & Impacts
from Steel Struts/Metal Wheel

Figure Number	Description	List Price	List Price/Ft*
DUCTILE IRON GRATES			
9940-M	3 m Sloped Channel w/Extra HD Painted Mild Steel Frame, Slotted DI Grates, & LD	\$1,836.20	\$186.50
9940-N-M	3 m Neutral Channel w/Extra HD Painted Mild Steel Frame, Slotted DI Grates, & LD	\$1,836.20	\$186.50
9940-ADA	3 m Sloped Channel w/Extra HD Painted Mild Steel Frame, Slotted DI ADA Grts & LD	\$1,836.20	\$186.50
9940-N-ADA	3 m Neutral Channel w/Extra HD Painted Mild Steel Frame, Slotted DI ADA Grt & LD	\$1,836.20	\$186.50
STAINLESS STEEL GRATES			
9940-SSHDE	3 m Sloped Channel w/Extra HD Painted Mild Steel Frame, Slotted SS Grates, & LD	\$3,091.80	\$314.20
9940-N-SSHDE	3 m Neutral Channel w/Extra HD Painted Mild Steel Frame, Slotted SS Grates, & LD	\$3,091.80	\$314.20

Chem-Caulk 915 Sealant (**one** tube joins approximately **four** 9940 channel sections)

* List price per foot for estimating only, final price may vary as meters are 3.28 feet and is such why the final price may vary.

Locking Device Specification for -HPP Grate Only, All Other Grates Are QuickLok™ Style

Figure Number	Description	List ea.	List / Ft.*
9940-HPP-LD	2" Stainless Steel Socket Head Bolt with Stainless Steel Locking Bar	\$65.80	\$40.20

Grates Specification for 9940 ZIP Trench™ Systems

Load Class A: Light Duty

EN 1433, Class A—3,500 lbs., 70 psi
Pedestrian, Wheel Chair & Bicycle Traffic

Figure Number	Description	LD	Length (m)	Wt. (lbs.)	Grate Only - List Price (LD's included in frame)	
					List ea.	List / Ft.*
9870-410-GP	Galvanized Steel Perforated		1	4.4	\$94.40	\$28.80
			1/2	2.2	\$61.30	\$37.30
9870-420-G	Galvanized Steel Slotted		1	3.5	\$68.40	\$20.80
			1/2	1.7	\$39.10	\$23.80
9870-447-SSADA	SS Slotted ADA Compliant		1	3.5	\$970.60	\$295.80
			1/2	1.7	\$647.10	\$394.60
9870-450-SS	SS Slotted		1	6.0	\$238.70	\$72.80
			1/2	3.0	\$154.00	\$94.10
9870-451-SSPA	SS Perforated		1	5.5	\$271.30	\$82.90
			1/2	2.8	\$167.00	\$102.00
9930-491-HPP*	Black Polypropylene, HP	9940-HPP-LD	1/2	4.0	\$100.70	\$61.40
9870-494-PADAB	Black Polypropylene, ADA Compliant		1/2	6.5	\$82.00	\$50.10
9870-494-PADAG	Gray Polypropylene, ADA Compliant		1/2	6.5	\$84.70	\$51.60

* Includes Locking Device for 9940 Frame

* List price per foot for estimating only, final price may vary as meters are 3.28 feet and is such why the final price may vary.

Grates Specification for 9940 ZIP Trench™ Systems

Load Class C: Heavy Duty

EN 1433, Class C—56,000 lbs., 1,162 psi
 Commercial Pneumatic Tire Traffic Patterns, Forklifts & Tractor
 Trailers; Cast Grates only recommended for 9931

Figure Number	Description	Length	Weight	Grate Only - List Price	
				(LD's included in frame)	
				List ea.	List/Ft.*
9870-411-GPHD	Galv Steel Perf (Reinforced)	1	10.0	\$167.60	\$51.10
		1/2	5.0	\$94.40	\$57.60
9870-425-GHD	Galv Steel Slotted (Reinforced)	1	8.5	\$118.70	\$36.20
		1/2	4.2	\$84.40	\$51.50
9870-430-SSM	SS Heavy Duty Mesh	1	5.5	\$808.70	\$246.60
		1/2	2.8	\$566.30	\$345.30
9870-455-SSHD	SS Slotted, Heavy Duty	1	9.0	\$513.30	\$156.60
		1/2	4.5	\$322.50	\$196.60
9870-465-SSP	SS Perforated (Reinforced)	1	9.0	\$586.70	\$179.00
		1/2	4.5	\$342.30	\$208.80
9870-462-DGC	Ductile Iron Slotted Grates	1/2	10.0	\$93.40	\$57.00
9870-479-MD	DI Mosaic Pattern, HD Grates	1/2	10.0	\$113.30	\$69.10
9870-487-MADAC	DI Slotted ADA Grates	1/2	4.0	\$93.40	\$57.00
9870-492-RC	Resin Composite Slotted Grates	1/2	4.0	\$101.20	\$61.90

Load Class E: Extra Heavy Duty

EN 1433, Class E—135,000 lbs., 2,788 psi
 Commercial Solid Tire Traffic Patterns, Forklifts & Impacts from
 Steel Struts/Metal Wheel

Figure Number	Description	Length	Wt.	Grate Only - List Price	
				(LD's included in frame)	
				List ea.	List/Ft.*
9870-435-GHDE	Galv Slotted Extra HD Class E	1	13	\$210.00	\$64.10
9870-461-M	DI Slotted Extra HD Class E	1/2	0.5	\$100.70	\$61.30
9870-478-MADA	DI Longitudinal ADA Extra HD Class E	1/2	13.8	\$100.70	\$61.30
9870-490-SSHDE	SS Slotted Extra HD Class E	1	13	\$619.90	\$189.00

* List price per foot for estimating only, final price may vary as meters are 3.28 feet and is such why the final price may vary.

9940 ZIP TRENCH™ 6" WIDE TRENCH DRAIN ACCESSORIES



Figure Number	Description	List Price	List Price/Ft*
9940-CFLG	3 meter Sloped Channel w/ Heavy Duty Painted Mild Steel Frame (less Grate)	\$1,232.30	\$125.20
9940-CFLG-N	3 meter Neutral Channel w/ Heavy Duty Painted Mild Steel Frame (less Grate)	\$1,232.30	\$125.20
9940-CFLG-G	3 meter Sloped Channel w/ Heavy Duty Galvanized Steel Frame (less Grate)	\$1,232.30	\$125.20
9940-CFLG-N-G	3 meter Neutral Channel w/ Heavy Duty Galvanized Steel Frame (less Grate)	\$1,232.30	\$125.20
9940-CFLG-SS	3 meter Sloped Channel w/ Heavy Duty Stainless Steel Frame (less Grate)	\$1,879.80	\$191.10
9940-CFLG-N-SS	3 meter Neutral Channel w/ Heavy Duty Stainless Steel Frame (less Grate)	\$1,879.80	\$191.10
9940-ES-CS	Coated Steel End Cap for Shallow End of Channel	\$21.80	
9940-ED-HCS	Coated Steel End Cap & Horizontal Outlet for Deep End of Channel	\$38.70	
9940-ED-CS	Coated Steel End Cap	\$21.80	
9940-ES-G	Galvanized Steel End Cap for Shallow End of Channel	\$27.10	
9940-ED-HG	Galvanized Steel End Cap & Horizontal Outlet for Deep End of Channel	\$48.30	
9940-ES-SS	Stainless Steel End Cap for Shallow End of Channel	\$52.20	
9940-ED-HSS	Stainless Steel End Cap & Horizontal Outlet for Deep End of Channel	\$52.20	
9940-ED-SS	Stainless Steel End Cap for Deep End of Channel	\$52.20	
9940-ED-G	Galvanized Steel End Cap for Deep End of Channel	\$27.10	
9940-BO4	4" No-hub bottom outlet adaptor	\$38.70	
9940-MC	Double male coupling	\$16.20	
9859	QuickLok™ Grate Lifting Tool	\$43.90	
9940-CB-7-C	Catch Basin for center of Run (Use w/ channel # 7)	\$563.10	
9940-CB-7-E	Catch Basin for end of Run (Use w/ channel # 7)	\$563.10	
9940-CHNL	3 meter channel only	\$474.00	
9940-CHNL-1	1 meter channel only	\$158.30	
9940-F	3 meter Coated Steel Frame only	\$758.30	
9940-F-1	1 meter Coated Steel Frame Only	\$252.80	
9940SS-F	3 meter Stainless Steel Frame only	\$1,405.80	
9940SS-F-1	1 meter Stainless Steel Frame Only	\$468.60	
9940G-F	3 meter Galvanized Steel Frame only	\$758.30	
9940G-F-1	1 meter Galvanized Steel Frame Only	\$252.80	
9940-EF-LC-CS	End Frame for L/C option	\$128.90	
Chem-Caulk 915	Sealant (one tube joins approximately four 9940 channel sections)	\$37.00	
9940SS-CB-7-C	Catch Basin w/ SS Rail for Center of Run (Use w/ Channel 7)	\$910.70	
9940SS-CB-7-E	Catch Basin w/ SS Rail for End of Run (Use w/ Channel 7)	\$910.70	
9940-BP	Polypropylene Sediment Bucket for Catch Basin	\$138.00	

* List price per foot for estimating only, final price may vary as meters are 3.28 feet and is such why the final price may vary.

9960 ZIP TRENCH™ 12" WIDE TRENCH DRAIN SYSTEMS



Figure Number	Description	List Price	List Price/Ft*
9960-M	3 meter channel With Extra Heavy Duty Frame and E Slotted Ductile Iron Grate w / LD	\$3,533.10	\$359.10
9960-MADA	3 meter channel With Extra Heavy Duty Frame and ADA Ductile Iron Grate w / LD	\$3,749.60	\$381.10
9960-MC	3 meter channel With Coated Steel Frame and Class C DI Grate w / LD	\$3,107.20	\$315.90
9960-MADAC	3 meter channel With Coated Steel Frame and Class C MADA Grate w / LD	\$3,189.70	\$324.20
9960G-GM	3 meter Channel with Galvanized Steel Frame and Galvanized Steel Mesh Grate	\$6,122.10	\$622.20
9960G-GPHD	3 meter Channel with Galvanized Steel Frame and Galvanized Steel Perforated Grate	\$6,122.10	\$622.20
9960SS-SSM	3 meter Channel with Stainless Steel Frame and Stainless Steel Mesh Grate	\$9,781.80	\$994.10
9960SS-SSP	3 meter Channel with Stainless Steel Frame and Stainless Steel Perforated Grate	\$9,781.80	\$994.10
9960-LC-M	3 meter Extra Heavy Duty Frame Only With Ductile Iron Slotted Grates	\$2,829.90	\$287.60
9960-LC-MADA	3 meter Extra Heavy Duty Frame Only With ADA Ductile Iron Grates	\$3,046.30	\$309.60
			List Price/Ft*
-M	E Rated Slotted Ductile Iron Grate 1/2 m w/ 9872LD Locking Device	each \$286.60	\$174.70
-MADA	E Rated ADA Ductile Grate 1/2 m w/ 9872LD Locking Device	each \$322.70	\$196.80
-GM	C Rated Galvanized Steel Mesh Grate 1 m w/ 9960QLK LD	each \$1,435.90	\$437.80
-GM .5	C Rated Galvanized Steel Mesh Grate 1/2 m w/ 9960QLK LD	each \$717.90	\$437.80
-GPHD	C Rated Galvanized Steel Perforated Grate 1 m w/ 9960QLK LD	each \$1,435.90	\$437.80
-GPHD .5	C Rated Galvanized Steel Perforated Grate 1/2 m w/ 9960QLK LD	each \$717.90	\$437.80
-MC	C Rated Slotted Ductile Iron Grate 1/2 m w/ 9872LD LD	each \$215.50	\$131.50
-MADAC	C Rated ADA Ductile Grate 1/2 m w/ 9872LD Locking Device	each \$229.30	\$139.70
-SSM	C Rated Stainless Steel Mesh Grate 1 m w/ 9960QLK LD	each \$2,505.50	\$763.90
-SSM.5	C Rated Stainless Steel Mesh Grate 1/2 m w/ 9960QLK LD	each \$1,244.30	\$758.70
-SSP	C Rated Stainless Steel Perforated Grate 1 m w/ 9960QLK LD	each \$2,505.30	\$763.90
-SSP.5	C Rated Stainless Steel Perforated Grate 1/2 m w/ 9960QLK LD	each \$1,244.30	\$758.70
9960-LD	Grate locking Device each (1) per grate w/ LD	\$8.60	
9960-ES-CS	Female End Cap	\$80.50	
9960-ED-HCS	Male End Cap, End Outlets 4", 6" 8"	\$80.50	
9960-ES-G	Female End Cap	\$108.90	
9960-ED-HG	Male End Cap, End Outlets 4", 6" 8"	\$108.90	
9960-ES-SS	Female End Cap	\$112.70	
9960-ED-HSS	Male End Cap, End Outlets 4", 6" 8"	\$112.70	
9960-MC	Double Male Coupling	\$80.50	
9960-BO	Bottom Outlet 4",6",8"	\$80.50	
9960-BO-TRIM	Trim only	\$14.20	
9960-F	3 m Coated Steel Frame Only	\$1,110.50	
9960-F-1	1 m Coated Steel Frame Only	\$370.20	
9960G-F	3 m Galvanized Steel Frame Only	\$1,110.50	
9960G-F-1	1 m Galvanized Steel Frame Only	\$370.20	
9960SS-F	3 m Stainless Steel Frame Only	\$1,562.00	
9960SS-F-1	1 m Stainless Steel Frame Only	\$520.30	
9960-CHNL-3	3 m Polypropylene Channel Only	\$703.40	
9960-CHNL-1	1 meter Polypropylene Channel Only	\$234.50	
9960-CB-Y08-C	Catch Basin for Center of Run (Use w/ channel # 7)	\$2,090.00	
9960-CB-Y08-E	Catch Basin for End of Run (use w/ channel # 7)	\$2,090.00	
9960-EF-LC-CS	End Frame for L/C Option	\$121.40	

Chem-Caulk 915 Sealant (one tube joins approximately three 9960 channel sections)

* List price per foot for estimating only, final price may vary as meters are 3.28 feet and is such why the final price may vary.

9940/9960 CATCH BASIN



Figure Number	Description	Weight (lbs.)	List Price
9960CB-MC-CS	Catch Basin w/-MC slotted grate/coated steel frame	226	\$1,732.50
9960CB-MC-SS	Catch Basin w/-MC slotted grate/stainless steel frame	226	\$4,066.90
9960CB-MC-G	Catch Basin w/-MC slotted grate/galv. Steel frame	226	\$2,251.20
9960CB-ME-CS	Catch Basin w/-ME slotted grate/coated steel frame	253	\$1,908.10
9960CB-ME-SS	Catch Basin w/-ME slotted grate/stainless steel frame	253	\$4,242.40
9960CB-ME-G	Catch Basin w/-ME slotted grate/galv. steel frame	253	\$2,426.80
9960CB-ADAC-CS	CB w/-ADAC ADA grate/coated steel frame	226	\$1,792.60
9960CB-ADAC-SS	CB w/-ADAC ADA grate/stainless steel frame	226	\$4,126.90
9960CB-ADAC-G	CB w/-ADAC ADA grate/galv. steel frame	226	\$2,311.30
9960CB-ADAE-CS	CB w/-ADAE ADA grate/coated steel frame	266	\$1,971.80
9960CB-ADAE-SS	CB w/-ADAE ADA grate/stainless steel frame	266	\$5,157.40
9960CB-ADAE-G	CB w/-ADAE ADA grate/galv. steel frame	266	\$2,490.40
9960CB-CS	Catch Basin with coated steel frame & sump less grate	80	\$1,089.70
9960CB-SS	Catch Basin with stainless steel frame & sump less grate	80	\$3,423.90
9960CB-G	Catch Basin with galvanized steel frame & sump less grate	80	\$1,608.20
9960CB-MC	Ductile iron slotted grate load class "C" w/ securing bolts	146	\$642.90
9960CB-ME	Ductile iron slotted grate load class "E" w/ securing bolts	173	\$817.50
9960CB-ADAC	Ductile iron ADA grate load class "C" w/ securing bolts	146	\$703.60
9960CB-ADAE	Ductile iron ADA grate load class "E" w/ securing bolts	186	\$882.10
9960CB-LD	Grate lock bolt kit	2	\$7.00
9960CB-sump	Sump basin only less frame and grate	48	\$499.00
9940CBCA	Channel collar adapter with securing screws	1.5	\$131.70
9960CBCA	Channel collar adapter with securing screws	2.5	\$234.60
960CB-PA4	4" outlet pipe adapter with securing screws	0.5	\$48.60
9960CB-PA6	6" outlet pipe adapter with securing screws	1	\$48.60
9960CB-PA8	8" outlet pipe adapter with securing screws	1.5	\$48.60
9960CB-B	9960 catch basin stainless steel bucket	20	\$1,225.40

9660 SERIES STAINLESS STEEL TRENCH DRAIN SYSTEM



Load Class A: Light Duty

EN 1433, Class A—3,500 lbs., 70 psi Pedestrian, Wheel Chair & Bicycle Traffic

Figure Number	Description	List Price	List Price/Ft*
9660-SSADA	1m sloped channel w/Slotted ADA Compliant Stainless Steel Grate & Lock Device	\$2,881.80	\$878.60
9660-Y-SSADA	1m sloped channel w/4" No-Hub Vert. Outlet w/Slotted ADA Compliant SS Grt & LD	\$3,059.60	\$932.80
9660-BW-SSADA	1m sloped channel w/4" Butt Weld Vert. Outlet w/Slotted ADA Compliant SS Grt & LD	\$3,059.60	\$932.80
9660-N-SSADA	1m neutral channel w/Slotted ADA Compliant Stainless Steel Grate & Lock Device	\$2,671.30	\$814.50
9660-10N-Y-SSADA	1m neutral channel #10 w/4" Center Outlet w/SSADA Grate & Lock Device	\$3,059.60	\$932.80
9660-CB-SSADA	Catch Basin w/Slotted ADA Compliant Stainless Steel Grate & Lock Device	\$6,558.00	
9660-N-5-SSADA	1/2 meter neutral channel w/Slotted ADA Compliant SS Grate & Lock Device	\$1,901.20	\$1,159.30
9660-SS	1m sloped channel w/Slotted Stainless Steel Grate & Lock Device	\$1,728.00	\$526.80
9660-Y-SS	1m sloped channel w/4" No-Hub Vertical Outlet w/Slotted SS Grate & Lock Device	\$1,909.20	\$582.10
9660-BW-SS	1m sloped channel w/4" Butt Weld Vertical Outlet w/Slotted SS Grate & Lock Device	\$1,909.20	\$582.10
9660-N-SS	1m neutral channel w/Slotted Stainless Steel Grate & Lock Device	\$1,509.40	\$460.20
9660-10N-Y-SS	1m neutral channel #10 w/4" Center Outlet w/SS Grate & Lock Device	\$1,909.20	\$582.10
9660-CB-SS	Catch Basin w/Slotted Stainless Steel Grate & Lock Device	\$6,267.70	
9660-N-5-SS	1/2 meter neutral channel w/Slotted Stainless Steel Grate & Lock Device	\$977.30	\$595.90
9660-SSPA	1m sloped channel w/Perforated Stainless Steel Grate & Lock Device	\$1,740.80	\$530.80
9660-Y-SSPA	1m sloped channel w/4" No-Hub Vertical Outlet w/Perforated SS Grate & LD	\$1,921.90	\$586.00
9660-BW-SSPA	1m sloped channel w/4" Butt Weld Vertical Outlet w/Perforated Stainless Steel Grate & Lock Device	\$1,921.90	\$586.00
9660-N-SSPA	1m neutral channel w/Perforated Stainless Steel Grate & Lock Device	\$1,428.80	\$435.60
9660-10N-Y-SSPA	1m neutral channel #10 w/4" Center Outlet w/SSPA Grate & Lock Device	\$1,921.90	\$586.00
9660-CB-SSPA	Catch Basin w/Perforated Stainless Steel Grate & Lock Device	\$6,273.00	
9660-N-5-SSPA	1/2 meter neutral channel w/Perforated Stainless Steel Grate & Lock Device	\$982.00	\$598.90

Load Class C: Heavy Duty

EN 1433, Class C—56,000 lbs., 1,162 psi Commercial Pneumatic Tire Traffic Patterns, Forklifts & Tractor Trailers

Figure Number	Description	List Price	List Price/Ft*
9660-SSM	1m sloped channel w/Heavy Duty Stainless Steel Mesh Grate & Lock Device	\$2,951.00	\$899.70
9660-Y-SSM	1m sloped channel w/4" No-Hub Vertical Outlet w/Heavy Duty SS Mesh Grt & LD	\$3,130.60	\$954.50
9660-BW-SSM	1m sloped channel w/4" Butt Weld Vertical Outlet w/Heavy Duty SS Mesh Grt & LD	\$3,130.60	\$954.50
9660-N-SSM	1m neutral channel w/Heavy Duty Stainless Steel Mesh Grate & Lock Device	\$2,359.40	\$719.30
9660-10N-Y-SSM	1m neutral channel #10 w/4" Center Outlet w/SSM Grate & Lock Device	\$3,130.60	\$954.50
9660-CB-SSM	Catch Basin w/Heavy Duty Stainless Steel Mesh Grate & Lock Device	\$7,965.50	
9660-N-5-SSM	1/2 meter neutral channel w/Heavy Duty Stainless Steel Mesh Grate & Lock Device	\$1,276.50	\$778.40

* List price per foot for estimating only, final price may vary as meters are 3.28 feet and is such why the final price may vary.

9660 SERIES STAINLESS STEEL TRENCH DRAIN SYSTEM



Load Class C: Heavy Duty

EN 1433, Class C—56,000 lbs., 1,162 psi Commercial Pneumatic Tire Traffic Patterns, Forklifts & Tractor Trailers

Figure Number	Description	LIST Price	List Price/Ft*
9660-SSHD	1m sloped channel w/Heavy Duty Stainless Steel Slotted Grate & Lock Device	\$2,631.10	\$802.20
9660-Y-SSHD	1m sloped channel w/4" No-Hub Vertical Outlet w/HD SS Slotted Grate & LD	\$2,860.90	\$872.20
9660-BW-SSHD	1m sloped channel w/4" Butt Weld Vertical Outlet w/HD SS Slotted Grate & LD	\$2,860.90	\$872.20
9660-10N-Y-SSHD	1m neutral channel #10 w/4" Center Outlet w/SSHD Grate & Lock Device	\$2,860.90	\$872.20
9660-N-SSHD	1m neutral channel w/Heavy Duty Stainless Steel Slotted Grate & Lock Device	\$2,631.10	\$802.20
9660-CB-SSHD	Catch Basin w/Heavy Duty Stainless Steel Slotted Grate & Lock Device	\$8,126.20	
9660-N-5-SSHD	1/2 meter neutral channel w/Heavy Duty SS Slotted Grate & Lock Device	\$1,701.70	\$1,037.70
9660-SSP	1m sloped channel w/Heavy Duty Perforated Stainless Steel Grate & Lock Device	\$2,325.80	\$709.10
9660-Y-SSP	1m sloped channel w/4" No-Hub Vertical Outlet w/HD Perforated SS Grate & LD	\$2,505.40	\$763.90
9660-BW-SSP	1m sloped channel w/4" Butt Weld Vertical Outlet w/HD Perforated SS Grate & LD	\$2,505.40	\$763.90
9660-N-SSP	1m neutral channel w/Heavy Duty Perforated Stainless Steel Grate & Lock Device	\$2,325.60	\$709.00
9660-10N-Y-SSP	1m neutral channel #10 w/4" Center Outlet w/SSP Grate & Lock Device	\$2,505.40	\$763.90
9660-CB-SSP	Catch Basin w/Heavy Duty Perforated Stainless Steel Grate & Lock Device	\$8,142.90	
9660-N-5-SSP	1/2 meter neutral channel w/Heavy Duty Perforated SS Grate & Lock Device	\$1,453.50	\$886.30
9660-466-SBG	1m sloped channel w/Heavy Duty Stainless Steel Bar Grate & Vandal Proof LD	\$3,000.50	\$914.80
9660-Y-466-SBG	1m sloped channel w/4" No-Hub Vertical Outlet w/HD SS Bar Grate & VP LD	\$3,179.90	\$969.50
9660-BW-466-SBG	1m sloped channel w/4" Butt Weld Vertical Outlet w/HD SS Bar Grate & VP LD	\$3,179.90	\$969.50
9660-N-466-SBG	1m neutral channel w/Heavy Duty SS Bar Grate & Vandal Proof Lock Device	\$3,000.50	\$914.80
9660-10N-Y-466-SBG	1m neutral channel #10 w/4" Center Outlet w/SBG Grate & Vandal Proof LD	\$3,179.90	\$969.50
9660-CB-466-SBG	Catch Basin w/Heavy Duty Stainless Steel Bar Grate & Vandal Proof Lock Device	\$8,375.20	
9660-N-5-466-SBG	1/2 meter neutral channel w/Heavy Duty Stainless Steel Bar Grate & VP LD	\$1,686.00	\$1,028.10
9660-466-SBG-316	1m sloped channel (Type 316) w/Heavy Duty SS Bar Grate & LD	\$4,426.80	\$1,349.60
9660-Y-466-SBG-316	1m sloped channel (Type 316) w/4" No-Hub Vertical Outlet w/HD SS Bar Grate & LD	\$4,764.50	\$1,452.60
9660-BW-466-SBG-316	1m sloped channel (Type 316) w/4" BW Vertical Outlet w/HD SS Bar Grate & LD	\$4,764.50	\$1,452.60
9660-N-466-SBG-316	1m neutral channel (Type 316) w/Heavy Duty Stainless Steel Bar Grate & LD	\$4,764.50	\$1,452.60
9660-10N-Y-466-SBG-316	1m neutral channel #10 (Type 316) w/4" Center Outlet w/SBG Grate & LD	\$4,008.60	\$1,222.10
9660-CB-466-SBG-316	Catch Basin (Type 316) w/Heavy Duty Stainless Steel Bar Grate & Lock Device	\$8,258.10	
9660-N-5-466-SBG-316	1/2 meter neutral channel (Type 316) w/Heavy Duty Stainless Steel Bar Grate & LD	\$2,552.40	\$1,556.30
9660-466-ASNG	Anti-Slip Notched Grate add per 1 meter.		\$72.80

* List price per foot for estimating only, final price may vary as meters are 3.28 feet and is such why the final price may vary.

9660 SERIES STAINLESS STEEL TRENCH DRAIN SYSTEMS



Load Class E: Extra Heavy Duty

**EN 1433, Class E—135,000 lbs., 2,788 psi
Commercial Solid Tire Traffic Patterns, Forklifts & Impacts from
Steel Struts/Metal Wheel**

Figure Number	Description	LIST Price	List Price/Ft*
9660-SSHDE	1m sloped channel w/Extra Heavy Duty Stainless Steel Slotted Grate & Lock Device	\$3,599.40	\$1,097.40
9660-Y-SSHDE	1m sloped channel w/4" No-Hub Vertical Outlet w/Extra HD SS Slotted Grate & LD	\$3,814.10	\$1,162.90
9660-BW-SSHDE	1m sloped channel w/4" Butt Weld Vertical Outlet w/Extra HD SS Slotted Grate & LD	\$3,814.10	\$1,162.90
9660-N-SSHDE	1m neutral channel w/Extra Heavy Duty Stainless Steel Slotted Grate & Lock Device	\$3,599.40	\$1,097.40
9660-10N-Y-SSHDE	1m neutral channel #10 w/4" Center Outlet w/SSHDE Grate & Lock Device	\$3,814.10	\$1,162.90
9660-CB-SSHDE	Catch Basin w/Extra Heavy Duty Stainless Steel Slotted Grate & Lock Device	\$10,049.00	
9660-N-5-SSHDE	1/2 meter neutral channel w/Extra Heavy Duty SS Slotted Grate & Lock Device	\$2,017.10	\$1,230.00
Fabrication Charges			
	Shorten Channel	\$405.60	
	Miter (90°,45° etc.)	\$1,655.50	
	Tee	\$3,218.90	
	Clamping Collar	\$1,450.80	

* List price per foot for estimating only, final price may vary as meters are 3.28 feet and is such why the final price may vary.

9660 SERIES STAINLESS STEEL GRATING AND CHANNELS



Load Class A: Light Duty

**EN 1433, Class A—3,500 lbs., 70 psi
Pedestrian, Wheel Chair & Bicycle Traffic**

Figure Number	Description	Length	Wt.	Grate only	
				list ea.	List / Ft.*
9660-447-SSADA.5G	Stainless Steel Slotted ADA Compliant, (Grate Only)	1/2 meter	1.7 lbs.	\$660.70	\$402.90
9660-450-SS.5G	Stainless Steel Slotted, (Grate Only)	1/2 meter	3.0 lbs.	\$167.80	\$102.30
9660-451-SSPA.5G	Stainless Steel Perforated, (Grate Only) 1/2	1/2 meter	2.8 lbs.	\$180.80	\$110.30
9660-447-SSADA1G	Stainless Steel Slotted ADA Compliant	1 meter	3.5 lbs	\$997.70	\$304.20
9660-450-SS1G	Stainless Steel Slotted	1 meter	6.0 lbs	\$265.90	\$81.10
9660-451-SSPA1G	Stainless Steel Perforated	1 meter	5.5 lbs	\$298.40	\$90.90

Load Class C: Heavy Duty

**EN 1433, Class C—56,000 lbs., 1,162 psi
Commercial Pneumatic Tire Traffic Patterns, Forklifts & Tractor Trailers**

Figure Number	Description	Length	Wt.	Grate only	
				List ea.	List / Ft.*
9660-430-SSM1G	Stainless Steel Heavy Duty Mesh	1 meter	5.5 lbs.	\$835.70	\$254.00
9660-455-SSHD1G	Stainless Steel Heavy Duty Slotted	1 meter	9.0 lbs	\$513.30	\$156.60
9660-465-SSP1G	Stainless Steel Heavy Duty Perforated	1 meter	9.0 lbs	\$613.80	\$187.20
9660-466-SBG-LD	(2) 1/2 meter pieces) SS HD Bar Grate w/VP Locking Device	1 meter	14.0 lbs.	\$965.00	\$294.00
9660-466-SBG-LD-316	(2) 1/2 meter pieces) SS HD Bar Grate, Type 316 w/VP LD	1 meter	14.0 lbs.	\$1186.20	\$357.90
9660-430-SSM.5G	Stainless Steel Heavy Duty Mesh, (Grate Only)	1/2 meter	2.8 lbs.	\$566.30	\$353.70
9660-455-SSHD.5G	Stainless Steel Heavy Duty Slotted, (Grate Only)	1/2 meter	4.5 lbs.	\$322.50	\$196.60
9660-465-SSP.5G	Stainless Steel Heavy Duty Perforated, (Grate Only)	1/2 meter	4.5 lbs.	\$356.00	\$217.10

* List price per foot for estimating only, final price may vary as meters are 3.28 feet and is such why the final price may vary.

9660 SERIES STAINLESS STEEL GRATING AND CHANNELS



Load Class E: Extra Heavy Duty

EN 1433, Class E—135,000 lbs., 2,788 psi

Commercial Solid Tire Traffic Patterns, Forklifts & Impacts from Steel Struts/Metal Wheel

Figure Number	Description	Length	Wt.	Grate Only
				List ea. List/Ft.*
9660-490-SSHDE1G	Extra Heavy Duty Stainless Steel Slotted (Grate Only)	1 meter	13.0 lbs.	\$619.90 \$189.00
9660-490-SSHDE.5	Extra Heavy Duty Stainless Steel Slotted (Grate Only)	1/2 meter	6.5 lbs.	\$413.10 \$251.90
	* List price per foot for estimating only, final price may vary as meters are 3.28 feet and is such why the final price may vary.			
				LIST Price
9660-CLG-N5-304	1/2 meter neutral replacement channel (Less Grate)	1/2 meter		\$1,379.30
9660-CLG-304	1 meter sloped replacement channel (Less Grate)	1 meter		\$2,073.00
9660-CLG-Y-304	1 meter sloped replacement channel w/4" No-Hub Vertical Outlet (Less Grate)	1 meter		\$2,347.70
9660-CLG-BW-304	1 meter sloped replacement channel w/4" Butt Weld Vertical Outlet (Less Grate)	1 meter		\$2,347.70
9660-CLG-N-304	1 meter neutral replacement channel (Less Grate)	1 meter		\$1,927.90
9660-CLG-10N-Y-304	1 meter neutral replacement channel #10 w/4" No-Hub Center Vert Outlet(Less Grate)	1 meter		\$2,347.70
9665-CLG-N-304	1 meter neutral shallow (3 1/8") channel (less grate)	1 meter		\$1,927.90
9665-CLG-Y-304	1 meter neutral shallow (3 1/8") channel (less grate)	1 meter		\$2,347.70
9660-CLG-5-316	1/2 meter neutral replacement channel, Type 316 (Less Grate)	1/2 meter		\$1,613.70
9660-CLG-316	1 meter sloped replacement channel, Type 316 (Less Grate)	1 meter		\$2,425.30
9660-CLG-Y-316	1 meter sloped replacement channel, Type 316 w/4" No-Hub Vert Outlet (Less Grate)	1 meter		\$2,746.70
9660-CLG-BW-316	1 meter sloped replacement channel, Type 316 w/4" Butt Weld Vert Outlet (Less Grt)	1 meter		\$2,746.70
9660-CLG-N-316	1 meter neutral replacement channel, Type 316 (Less Grate)	1 meter		\$2,255.60
9660-CLG-10N-Y-316	1m neutral replacement channel #10 Type 316 w/4" Center Outlet (Less Grate)	1 meter		\$2,746.70
9665-CLG-N-316	1 meter neutral shallow (3 1/8") channel, Type 316 (less grate)	1 meter		\$2,255.60
9665-CLG-Y-316	1 meter neutral shallow (3 1/8") channel, Type 316 (less grate)	1 meter		\$2,746.70

9660 STAINLESS STEEL SERIES TRENCH DRAIN ACCESSORIES



Figure Number	Description	List Price
9660-ES	Shallow closing end plate (specify channel)	\$408.40
9660-ED	Deep closing end plate (specify channel)	\$408.40
9660-ES-316	Shallow closing end plate, Type 316 (specify channel)	\$477.80
9660-ED-316	Deep closing end plate, Type 316 (specify channel)	\$477.80
9660-H2Y	2" No-Hub horizontal outlet cap (specify channel #2, #5, #10 or #15)	\$408.40
9660-H3Y	3" No-Hub horizontal outlet cap (specify channel #5, #10 or #15)	\$408.40
9660-H4Y	4" No-Hub horizontal outlet cap (specify channel #10 or #15)	\$408.40
9660-H2Y-316	2" No-Hub horizontal outlet cap, Type 316 (specify channel #2, #5, #10 or #15)	\$477.80
9660-H3Y-316	3" No-Hub horizontal outlet cap, Type 316 (specify channel #5, #10 or #15)	\$477.80
9660-H4Y-316	4" No-Hub horizontal outlet cap, Type 316 (specify channel #10 or #15)	\$477.80
9660-DBS	Dome Bottom Strainer	\$201.00
9660-DBS-316	Dome Bottom Strainer, Type 316	\$236.70
-F	Anchor Flange (per meter)	\$1,338.00
-FC	Flashing Flange w/Flashing Clamp (per meter)	\$1,415.00
9660-CB Only	Catch Basin	\$5,970.30
9660-CB-316 Only	Catch Basin (Type 316)	\$7,104.60
9660-CB Bucket	Catch Basin Bucket	\$509.80
9660-CB Bucket 316	Catch Basin Bucket (Type 316)	\$620.60

12" WIDE STAINLESS STEEL 9670 SERIES

Figure Number	Description	List Price
9670-1224	12" x 24" Stainless Steel Sloped Channel with stainless steel bar grate	\$2,502.50
9670-1236	12" X 36" Stainless Steel Sloped Channel with stainless steel bar grate	\$3,753.90
9670-1248	12" X 48" Stainless Steel Sloped Channel with stainless steel bar grate	\$5,005.30
9670-1260	12" X 60" Stainless Steel sloped channel with stainless steel bar grate	\$6,253.20
9670-1272	12" X 72" Stainless Steel sloped channel with stainless steel bar grate	\$7,507.20
	End caps	\$541.60
	End Outlet 4", 6", 8"	\$541.60
	Bottom Outlets 4", 6", 8"	\$541.60
	Clamping Collar w/flange, and weepholes	add per foot \$333.10
	Flange only	add per foot \$266.40
	Vandal-proof Lockdown 4 corner per grate	add per foot \$125.70
	Bucket	\$740.90
	Fabrication 45, 90, Tee	\$4,138.90

3/4" WIDE 9671 STAINLESS STEEL SLOT DRAIN

Figure Number	Description	List Price
9671	3/4 Wide Stair 3/4 Wide Stainless Steel Slot Drain	POA

9666/9667 SERIES STAINLESS STEEL SHOWER DRAINS



9666 Stainless Steel ADA Shower Drain

Figure Number	Description	List Price
9666	2" wide ADA shower drain w/ vandal proof perforated grate 1' section	\$809.50
9666-FC	2" wide ADA shower drain w/ flashing flange and clamp w/ vandal proof perforated grate 1' section	\$1,077.10

9667 Flangeless Body w/ Satin Finish Loose Set Perforated ADA Grate, 2" NH Outlet

Figure Number	Description	Length (in)	Wt. (lbs.)	List Price
9667Y02-12	12" Stainless Steel Channel, 18 Ga. ADA Grate	12"	1.55	\$406.70
9667Y02-24	24" Stainless Steel Channel, 18 Ga. ADA Grate	24"	2.10	\$813.40
9667Y02-36	36" Stainless Steel Channel, 18 Ga. ADA Grate	36"	2.70	\$1219.70
9667Y02-48	48" Stainless Steel Channel, 18 Ga. ADA Grate	48"	3.30	\$1626.50
9667Y02-60	60" Stainless Steel Channel, 18 Ga. ADA Grate	60"	3.90	\$2032.80
U Vandal Proof	Add per foot			\$227.40

9667 Flanged Body w/ Satin Finish Loose Set Perforated ADA Grate, 2" NH Outlet

Figure Number	Description	Length (in)	Wt. (lbs.)	List Price
9667Y02-F-12	12" Stainless Steel Channel w/ Flange, ADA Grate	12"	2.10	\$525.20
9667Y02-F-24	24" Stainless Steel Channel w/ Flange, ADA Grate	24"	3.40	\$1049.20
9667Y02-F-36	36" Stainless Steel Channel w/ Flange, ADA Grate	36"	4.70	\$1573.50
9667Y02-F-48	48" Stainless Steel Channel w/ Flange, ADA Grate	48"	5.70	\$2098.20
9667Y02-F-60	60" Stainless Steel Channel w/ Flange, ADA Grate	60"	6.90	\$2622.80
U Vandal Proof	Add per foot			\$227.40

Regularly Furnished Grate

Figure Number	Description
-SPG	Perforated ADA Grate, Stainless Steel

Optional Grates

Figure Number	Description	Length (in)	Length (in)	List Price
-TIG	Tile Inlay ADA, Stainless Steel (Vandal Proof Not Available)	12"	12"	add \$57.60
		24"	24"	add \$69.30
		36"	36"	add \$97.50
		48"	48"	add \$99.20
		60"	60"	add \$132.50
-SRFG	Solid Rim Flow ADA Grate, Stainless Steel (Vandal Proof Not Available)	12"	12"	add \$57.60
		24"	24"	add \$69.30
		36"	36"	add \$97.50
		48"	48"	add \$99.20
		60"	60"	add \$132.50
-SLG	Slotted ADA Grate, Stainless Steel	12"	12"	N/C
		24"	24"	N/C
		36"	36"	N/C
		48"	48"	N/C
		60"	60"	N/C
-WG	Wave ADA Grate, Stainless Steel	12"	12"	N/C
		24"	24"	N/C
		36"	36"	N/C
		48"	48"	N/C
		60"	60"	N/C

9675 STAINLESS STEEL TROUGH DRAINS



Stainless Steel Trough Drains

Figure Number	Description	LIST Price
9675		
	Size	
12" x 24"	SS Floor Trough Drain Body with loose set Light Duty SS Bar Grate with 4" No Hub Vertical Outlet	\$2,830.60
12" x 36"	SS Floor Trough Drain Body with loose set Light Duty SS Bar Grate with 4" No Hub Vertical Outlet	\$4,247.10
12" x 48"	SS Floor Trough Drain Body with loose set Light Duty SS Bar Grate with 4" No Hub Vertical Outlet	\$5,663.70
12" x 60"	SS Floor Trough Drain Body with loose set Light Duty SS Bar Grate with 4" No Hub Vertical Outlet	\$7,077.70
18" x 24"	SS Floor Trough Drain Body with loose set Light Duty SS Bar Grate with 4" No Hub Vertical Outlet	\$3,339.20
18" x 36"	SS Floor Trough Drain Body with loose set Light Duty SS Bar Grate with 4" No Hub Vertical Outlet	\$4,936.70
18" x 48"	SS Floor Trough Drain Body with loose set Light Duty SS Bar Grate with 4" No Hub Vertical Outlet	\$6,531.60
18" x 60"	SS Floor Trough Drain Body with loose set Light Duty SS Bar Grate with 4" No Hub Vertical Outlet	\$8,126.40
	-U Vandal Proof list add per foot	\$75.50
	-F Anchor Flange list add per foot	\$358.80
	Trap Primer 1/2" NPT	\$95.00
	-FC Flashing Flange and Flashing Clamp with Weep Holes list add per foot	\$641.90

9678 AND 9679 STAINLESS STEEL THRESHOLD DRAINS



9679 Stainless Steel Threshold Drain 1- 3/4" Deep 13- 9/16" Wide

Figure Number	Size	Description	LIST Price
9679	42"	Stainless Steel Threshold Drain Body 42" Long w/ADA/Heelproof SS Wire Grate	\$5,014.80
	48"	Stainless Steel Threshold Drain Body 48" Long w/ADA/Heelproof SS Wire Grate	\$5,731.30
	60"	Stainless Steel Threshold Drain Body 60" Long w/ADA/Heelproof SS Wire Grate	\$7,164.00
	72"	Stainless Steel Threshold Drain Body 72" Long w/ADA/Heelproof SS Wire Grate	\$8,596.80
	84"	Stainless Steel Threshold Drain Body 84" Long w/ADA/Heelproof SS Wire Grate	\$10,029.60
	96"	Stainless Steel Threshold Drain Body 96" Long w/ADA/Heelproof SS Wire Grate	\$11,462.50
	108"	Stainless Steel Threshold Drain Body 108" Long w/ADA/Heelproof SS Wire Grate	\$12,895.10
	120"	Stainless Steel Threshold Drain Body 120" Long w/ADA/Heelproof SS Wire Grate	\$14,327.90
		-U Vandal Proof list Add Per Foot	\$75.50
		DX Flange Add per 1'	\$263.50
		Trap Primer 1/2" NPT	\$95.00
		Wood Insert Board list add per foot	\$118.40/foot

9678 Stainless Steel Threshold Drain 2" Deep x Various Width x 3' Long

Figure Number	Size	Description	LIST Price
9678-25	36"	Stainless Steel Threshold Drain Body 36" Long w/ Secured SS Slotted Grate	\$1,213.60
9678-50	36"	Stainless Steel Threshold Drain Body 36" Long w/ Secured SS Slotted Grate	\$1,397.00
9678-75	36"	Stainless Steel Threshold Drain Body 36" Long w/ Secured SS Slotted Grate	\$1,579.80
9678-100	36"	Stainless Steel Threshold Drain Body 36" Long w/ Secured SS Slotted Grate	\$1,762.20

FIBERGLASS TRENCH DRAIN SYSTEMS - 10" WIDE



9812 Series System Overview

High capacity, presloped fiberglass trench drain system with 9-foot sloped channels 801 through 812, or 9 foot neutral channels 803N, 806N, 809N and 812N, and three foot neutral channels 803N3, 806N3, 809N3 and 812N3.

Figure Number	Description	List Price	List Price
		Polyester	Polyester
		Per 9 ft	Per 3 ft
9812-M	Channel w/Coated Steel Frame and Ductile Iron Slotted Grates w/ Lock Device	\$2,686.40	\$1,052.40
9812-MADA	Channel w/Coated Steel Frame and DI ADA Slotted Grates with Lock Device	\$3,265.20	\$1,245.60
9812G-GB	Channel w/Galv Steel Frame and Galv Steel Bar Grates with Lock Device	\$2,719.00	\$1,087.00
9812G-M	Channel w/Galv Steel Frame and Ductile Iron Slotted Grates with Lock Device	\$2,859.30	\$1,133.70
9812G-MADA	Channel w/Galv Steel Frame and DI ADA Slotted Grates with Lock Device	\$3,438.10	\$1,326.60
9812SS-SSB	Polyester Channel w/Stainless Steel Frame and SS Bar Grates w/ Lock Device	\$7,197.00	\$2,775.80

9812 Series Inlets

Figure Number	Description	Wt. (lbs.)	List Price	
Universal Horizontal Inlet Caps (Schedule 40 PVC)				
9812-ICS	4, 6, or 8" Connection with Coated Steel Frame	3.0	\$179.50	
9812-IG	4, 6, or 8" Connection with Galvanized Steel Frame	3.0	\$198.60	
9812-ISS	4, 6, or 8" Connection with Stainless Steel Frame	136.0	\$241.50	
<i>For Joint Sealant and Repair Kit, see pg 42</i>				
†Polyester Regularly Furnished.				
	Description	List Price	Description	List Price
	9' Coated Steel Frame	\$463.80	3' Coated Steel Frame	\$206.60
	9' SS Frame	\$2,149.20	3' SS Frame	\$985.90
	9' Galvanized Steel Frame	\$636.70	3' Galv Steel Frame	\$285.50
	9' Polyester Channel only	\$978.50	3' Polyester Channel only	\$433.60

For Polyester **Fiberglass** Channels.

Figure Number	Description	Contents	Price Each
FRK-08	Polyester Fiberglass Repair Kit and Sealant (4-6 Joints)	8 oz.	\$95.30
FRK-28	Polyester Fiberglass Repair Kit and Sealant (10-16 Joints)	28 oz.	\$246.80
	Flammable can't Air Ship		

**Component Parts Price List
9812 Series Grates and Lock Devices**

Suffix	Description	(ft)	Wt. (lbs.)	List Price	List Price Each Grates	List Price Each Grates (ea)
				Grates Only	w/ LD	
				Per 9 ft	Per 9 ft	W/LD
-GB	Galv Stl Bar Grt(DIN Load Class "C")	3	25.1	\$1,057.00	\$1,103.90	\$368.00
-SSB	SS Bar Grt (DIN Load Class "C")	3	25.0	\$3,999.00	\$4,069.30	\$1,356.50
-M	DI Slotted Grt (DIN Load Class "E")	1.5	26.0	\$1,166.90	\$1,244.10	\$207.40
-MADA	DI ADA Grt (DIN Load Class "E")	1.5	26.3	\$1,745.70	\$1,823.00	\$303.90
-LDG	Galv Steel Hex Head Bolt					
-LDGB	Galv Steel Locking Clip for Galv Steel Bar Grate					
-LDSS	Stainless Steel Hex Head Bolt*					
*1/2"-13 UNC x 2" Long Stainless Steel Bolt						

9812 Series Catch Basins (2ft Length) and Accessories

Figure Number	Description	Wt. (lbs.)	List Price Each
9812-660-CBM12	14 1/2" Wide x 26 5/8" Deep w/Coated Steel Frame and DI Grate	118.0	\$1,665.70
9812G-660-CB12	14 1/2" Wide x 26 5/8" Deep w/Galv Steel Frame and Galv Bar Grate	40.0	\$1,834.20
9812SS-660-CB12	14 1/2" Wide x 26 5/8" Deep w/SS Frame and SS Bar Grate	40.0	\$3,898.70
9812-880-CBM24	27" Square, 26 3/4" Deep w/Coated Steel Frame and Ductile Iron Grate	289.0	\$2,714.10
9812G-880-CB24	27" Square, 26 3/4" Deep w/Galv Steel Frame and Galv Grate	85.0	\$2,888.80
9812SS-880-CB24	27" Square, 26 3/4" Deep w/SS Frame and SS Grate	85.0	\$5,516.40
Suffix	Description	Wt. (lbs.)	List Price Each
-BP	Plastic Bucket for 9812-660-CB12 Series	8.0	\$546.70
-BP	Plastic Bucket for 9812-880-CB24 Series	10.0	\$703.10

9812 Series Channel Collar and Pipe Adaptors

Suffix	Description	Wt. (lbs.)	List Price Each
-CCA12	Channel Collar Adaptor (9812 Channel)	8.0	\$204.00
-PA4	4" Pipe Plain End Adaptor	8.0	\$99.40
-PA6	6" Pipe Plain End Adaptor	8.0	\$99.40
-PA8	8" Pipe Plain End Adaptor	8.0	\$99.40

FIBERGLASS TRENCH DRAIN SYSTEMS 10" WIDE



9812-LC Frame and Grate System

Figure Number	Description	List Price	List Price
		9' long	3' long
9812-M-LC	Coated Steel Frame and Extra Heavy Duty Ductile Iron Grates	\$1,707.90	\$621.30
9812-MADA-LC	Coated Steel Frame and Extra heavy Duty Ductile Iron ADA Grates	\$2,286.70	\$814.30
9812G-GB-LC	Galvanized Steel Frame and Heavy Duty Galvanized Steel Bar Grates	\$1,740.40	\$653.40
9812SS-SSB-LC	Stainless Steel Frame and Heavy Duty Stainless Steel Bar Grates	\$6,218.10	\$2,342.10
	Coated Steel End Frames	\$121.40	
	Galvanized Steel End Frames	\$156.20	
	Stainless Steel End Frames	\$155.70	

9812 Series Outlets, End Caps and Accessories

Figure Number	Description	Wt. (lbs.)	List Price Each
Universal Horizontal Outlet Caps (Schedule 40 PVC)			
9812-HCS	4, 6, or 8" Connection with Coated Steel Frame	3.0	\$179.50
9812-HG	4, 6, or 8" Connection with Galvanized Steel Frame	3.0	\$198.70
9812-HSS	4, 6, or 8" Connection with Stainless Steel Frame	3.0	\$242.00
Universal Vertical (Bottom) Outlet (Schedule 40 PVC)			
9812-V	4, 6, or 8" Connection	3.0	\$128.60
Universal End Caps			
9812-ES-CS	End Cap with Coated Steel Frame (Shallow)	3.0	\$154.50
9812-ES-G	End Cap with Galvanized Steel Frame (Shallow)	3.0	\$180.10
9812-ES-SS	End Cap with Stainless Steel Frame (Shallow)	3.0	\$237.90
9812-ED-CS	End Cap with Coated Steel Frame (Deep)	3.0	\$154.50
9812-ED-G	End Cap with Galvanized Steel Frame (Deep)	3.0	\$180.10
9812-ED-SS	End Cap with Stainless Steel Frame (Deep)	3.0	\$237.90

†Polyester Regularly Furnished

9872 Series, 12" Wide System, End Caps and Accessories

Figure Number	Description	List Price	List Price
		Per 9 ft	Per 3 ft
9872-M	Channel w/Coated Steel Frame & Ductile Iron Slotted Grates with Lock Device	\$4,217.30	\$1,640.00
	Grates & Bolts	\$2,195.90	\$732.60
	Frame	\$1,043.00	\$474.60
9872-LC-M	Coated Steel Frame & Ductile Iron Slotted Grates with Lock Device	\$3,137.20	\$1,097.60
9872-ES-CS	End Cap with Coated Steel Frame (Shallow)		\$322.60
9872-ED-CS	End Cap with Coated Steel Frame (Deep)		\$322.60
9872-HCS	4, 6, or 8" Connection with Coated Steel Frame		\$341.60

PRECAST POLYMER CONCRETE TRENCH DRAIN SYSTEMS 6" WIDE



9895 PRESLOPED, PRECAST POLYMER SYSTEMS FOR MEDIUM CAPACITY TRENCH DRAINS CHANNELS & CATCH BASINS WITH INTEGRAL METAL RAIL

9895 6" Channel Series System with Integral Metal Rails

Sloped trench system with an integrally cast metal rail edge. For Grates see pgs 32 & 33, for Catch Basins see pg 27.

Figure Number	Description	LIST Price Polyester
9895	1 m sloped channels 1 through 40 w/Galvanized Rails	\$239.20
9895N	1 m neutral channels 00, 010, 020, 030 or 040 w/Galvanized Rails	\$239.20
9895N-05	1/2 m neutral channels 0103, 0203, 0303 or 0403 w/Galv Rails	\$158.90
9895-SS	1 m sloped channels 1 through 40 w/Stainless Steel Rails	\$452.70
9895N-SS	1 m neutrals 00, 010, 020, 030 or 040 w/Stainless Steel Rails	\$452.70
9895N-05-SS	1/2 m neutral channels 0103, 0203, 0303 or 0403 w/SS Rails	\$320.60

4" Universal Inlet, Outlet, and Closing End Caps - 6" Inlet and Outlet Caps w/Integrally Cast Metal Rail Edge

Figure Number	Description	Wt. (lbs.)	
4" Schedule 40 PVC			
9895-UNV4	4" Universal Horizontal Inlet, Outlet and Closing End Cap	1.0	\$21.90
6" Schedule 40 PVC			
		Wt. (lbs.)	
9895-I6CG	6" Inlet Cap w/Galv Steel Rail for Channel 30	5.2	\$155.70
9895-I6CSS	6" Inlet Cap w/Stainless Steel Rail for Channel 30	5.2	\$167.50
9895-I6DG	6" Inlet Cap w/Galv Steel Rail for Channel 40	6.0	\$155.70
9895-I6DSS	6" Inlet Cap w/Stainless Steel Rail for Channel 40	6.0	\$167.50
9895-H6CG	6" Outlet Cap w/Galv Steel Rail for Channel 30	5.0	\$155.70
9895-H6CSS	6" Outlet Cap w/Stainless Steel Rail for Channel 30	5.0	\$167.50
9895-H6DG	6" Outlet Cap w/Galv Steel Rail for Channel 40	5.8	\$155.70
9895-H6DSS	6" Outlet Cap w/Stainless Steel Rail for Channel 40	5.8	\$167.50
PVC Bottom Outlets			
		Wt. (lbs.)	
-V6F	Flumed Bottom Outlet for 6" Knockouts	2.0	\$72.50
9895-ID	Installation Device	3.0	\$44.60

For Channel Joint Sealant, see pg 42
Polyester Regularly Furnished.

**INTEGRAL METAL RAIL
9895 Series Catch Basins**

These 1/2 m Catch Basins have integral metal rails and are designed for use with the 9895 Series systems.

Figure Number	Description	Wt. (lbs.)	List Price Polyester
9895-901G-CB	With Galvanized Steel Frame, Bucket and Plastic Base	52.6	\$861.10
9895-901S-CB	With Stainless Steel Frame, Bucket and Plastic Base	52.6	\$999.10
9895-621G-CB	With Galvanized Steel Frame, Bucket and Plastic Base	55.8	\$1,295.20
9895-621S-CB	With Stainless Steel Frame, Bucket and Plastic Base	55.8	\$1,839.80
9895-631G-CB	With Galvanized Steel Frame, Bucket, Riser and Plastic Base	65.8	\$1,893.10
9895-631S-CB	With Stainless Steel Frame, Bucket, Riser and Plastic Base	65.8	\$2,195.10

See 9890 series 1/2 meter grates page 40 for 621 and 631 catch basins, See 9870 series 1/2 meter grates pages 32 & 33 for 901 catch basin

Catch Basin Accessories

Suffix	Description	Wt. (lbs.)	List Price
-FAT	Foul Air Trap For All Catch Basins	2.0	\$145.00
-BP	Plastic Sediment Bucket for 901 Catch Basin	1.5	\$151.80
-BP	Plastic Sediment Bucket for 621 Catch Basin	3.4	\$321.20
-BPL	Plastic Sediment Bucket for 631 Catch Basin	4.0	\$342.70

**PRECAST POLYMER SYSTEMS FOR SPECIAL PURPOSE APPLICATIONS
RESTRICTED INSTALLATION DEPTH**

9832 Series 1 Meter Shallow Channel

For use when installation depth is restricted.			Polyester
Figure Number	Description	Wt. (lbs.)	Per m
9832-080	1m neutral channels, 3 1/8" deep (Less Grates and Lock Devices)	18.5	\$245.90
9832-0100	1m neutral channels, 3 15/16" deep (Less Grates and Lock Devices)	27.6	\$249.40

9832 Series Inlet, Outlet and End Caps

Figure Number	Description	Wt. (lbs.)	Polyester
9832-080-EC	Universal End Cap	2.0	\$30.70
9832-0100-EC	Universal End Cap	2.0	\$30.70

9833 Series 1 Meter Narrow Channel

Figure Number	Description	Wt. (lbs.)	Polyester
9833	1 meter channel w/Galvanized Rail Edge	18.0	\$150.90
9833SS	1 meter channel w/Stainless Steel Rail Edge	18.0	\$254.80
9833-GP	1 meter Galvanized Steel Perforated Grate	4.0	\$148.10
9833-SSPG	1 meter Stainless Steel Perforated Grate	4.0	\$259.30
9833-G	1 meter Galvanized Steel Slotted Grate	4.0	\$123.60
9833-SS	1 meter Stainless Steel Slotted Grate	4.0	\$221.80
9833-M-ADA	1/2 meter Ductile Iron ADA Compliant Grate	7.3	\$74.00
9833-DPG	1/2 meter Decorative Gray Plastic Grate	1.2	\$356.00
9833-GEC	Closing end cap w/Galvanized Steel Rail Edge	0.3	\$22.70
9833-SSEC	Closing end cap w/Stainless Steel Rail Edge	0.3	\$26.30
9833-SSADA	1 Meter Stainless Steel Grate	4.0	\$1,047.50

9835 1 Meter Brickslot *Note -If used with 9930 Channel remove Lugs on Bottom

Figure Number	Description *See 9895 for Channel Selection	Wt. (lbs.)	Price Each
9835	1 meter Galvanized Brickslot Grate	18.4	\$283.20
9835-.5	1/2 meter Galvanized Brickslot Grate	9.2	\$178.40
9835-AC	1/2 meter Galvanized Brickslot Access Cover	16.9	\$412.70
9835HR	1 meter Galvanized Heel Resistant Brickslot Grate	18.0	\$331.70
9835HR-5	1/2 meter Galvanized Heel Resistant Brickslot Grate	9.0	\$224.40
9835HR-AC	1/2 meter Galv.Heel Resistant Brickslot Access Cover	22.0	\$458.60
9835SS	1 meter Stainless Steel Brickslot Grate	18.4	\$562.30
9835SS-.5	1/2 meter Stainless Steel Brickslot Grate	9.2	\$337.60
9835SS-AC	1/2 meter Stainless Steel Brickslot Access Cover	16.9	\$823.50
9835SSHR	1 meter Stainless Steel Heel Resistant Brickslot Grate	18.0	\$562.30
9835SSHR-5	1/2 meter Stainless Steel Heel Resistant Brickslot Grate	9.0	\$337.60
9835SSHR-AC	1/2 meter Stainless Steel Heel Resistant Brickslot Access Cover	22.0	\$823.50



**PRECAST POLYMER SYSTEMS FOR SPECIAL PURPOSE APPLICATIONS
RESTRICTED INSTALLATION DEPTH**

9836 1 Meter Shallow Channel with Edge Rail

Figure Number	Description *See 9895 for Grate Selection	Wt. (lbs.)	Price Each
9836-080-G	1 meter channel Type 080 w/Galv Rails	16.0	\$245.90
9836-080-SS	1 meter channel Type 080 w/SS Rails	16.0	\$423.70
9836-080-EC-G	Galvanized Steel End Cap for 080 Channels	1.0	\$22.70
9836-080-ECSS	Stainless Steel End Cap for 080 Channels	1.0	\$35.00

**PRECAST POLYMER SYSTEMS FOR SPECIAL PURPOSE APPLICATIONS RESTRICTED
INSTALLATION DEPTH SUMP BOXES AND OIL SEPARATORS**

9846 Series Sump Boxes

Preassembled, modular units for high capacity flow rates, sludge handling, chemical containment, and pump housing. Grates are Load Class "C."

43.3 Gallon Capacity

Figure Number	Description	Wt. (lbs.)	Polyester
9846-CI	2' x 2' x 2' Box w/Duco Coated CI Frame and Slotted CI Grate	434.0	\$3,205.70

161.2 Gallon Capacity

Figure Number	Description	Wt. (lbs.)	Polyester
9847-CI	3' x 3' x 3' Box w/Duco Coated CI Frame and Slotted CI Grate	1025.0	\$6,956.80

475 Gallon Capacity

Figure Number	Description	Wt. (lbs.)	Polyester
9848-CI	4' x 4' x 4' Box w/Duco Coated CI Frame and Slotted CI Grate	2028.0	\$18,515.50

Polyester Regularly Furnished.

9857 Oil Separator

Separates oils, greases, acids, sand, food waste and sludge from waste water.

Figure Number	Description	Wt. (lbs.)	Polyester
9857-LD	220 Gallon Capacity, w/4" Sch 40 PVC Inlet and Outlet with 1/4" steel diamond plate (meets DIN Class "A" load rating)	850.0	\$7,587.40
9857-HD	220 Gallon Capacity, w/4" Sch 40 PVC Inlet and Outlet with 1/4" reinforced steel diamond plate (meets DIN Class "C" load rating)	900.0	\$10,665.20

9877 6" CHANNEL WITH INTEGRAL DUCTILE IRON FRAME "LOAD CLASS F"

Figure Number	Description	Wt. (lbs.)	List Price
9877	Sloped Polyester Concrete Channel, 1m long, with 2, 1/2 m Secured Ductile Iron Grates	95.0	\$618.70
9877N	Neutral Polyester Concrete Channel, 1m long, with 2, 1/2 m Secured Ductile Iron Grates	95.0	\$618.70
9877N-5	Neutral Polyester Concrete Channel, 1/2 meter long, w/1/2 m Secured Ductile Iron Grate	50.0	\$394.70
9877-901D-CB	Polyester Concrete Catch Basin, 1/2 m long, w/ Bucket & 1/2 m Secured Slotted DI Grate	100.0	\$974.80
9877-621D-CB	Polyester Concrete Catch Basin, 1/2 m long, w/ Bucket & 1/2 m Secured Slotted DI Grate	90.0	\$2,169.60
9877-631D-CB	Polyester Concrete Catch Basin, 1/2 m long, w/ Bucket, Riser & Secured Slotted DI Grate	90.0	\$3,104.00
9877-ADA	Sloped Polyester Concrete Channel, 1 m long, with 2, 1/2 m Secured ADA DI Grates	100.0	\$662.60
9877N-ADA	Neutral Polyester Concrete Channel, 1 m long, with 2, 1/2 m Secured ADA DI Grates	100.0	\$662.60
9877N-5-ADA	Neutral Poly Concrete Channel, 1 m long, with 1/2 m Secured ADA DI Grate	50.0	\$416.50
9877-901D-CB-ADA	Polyester Concrete Catch Basin, 1/2 m long, w/ Bucket & 1/2 m Secured ADA DI Grate	100.0	\$996.50
9877-621D-CB-ADA	Polyester Concrete Catch Basin, 1/2 m long, w/ Bucket & 1/2 m Secured ADA DI Grate	100.0	\$2,217.50
9877-631D-CB-ADA	Polyester Concrete Catch Basin, 1/2 m long, w/ Bucket & Riser & Secured ADA DI Grate	100.0	\$3,152.00
Figure Number	Description	Wt. (lbs.)	
9877-EC	4" Universal Closing/Inlet/Outlet Cap	3.0	\$26.60
9877-I6C	6" Inlet Cap (Channel 030 only)	3.0	\$145.90
9877-I6D	6" Inlet Cap (Channel 040 only)	3.0	\$145.90
9877-H6C	6" Horizontal Outlet Cap (Channel 030 only)	3.0	\$145.90
9877-H6D	6" Horizontal Outlet Cap (Channel 040 only)	3.0	\$145.90
9877-V6F	6" Flumed Vertical (Bottom) Outlet	3.0	\$72.50
9877-ID	Installation Device	3.0	\$44.60
9877-GRT	Grate Removal Tool	1.0	\$48.80



**9805 SERIES 6" WIDE NEUTRAL SHALLOW CHANNEL W/ INTEGRAL
DUCTILE IRON RAIL AND DUCTILE IRON SLOTTED ADA GRATE**

**For Use When Installation Depth is Restricted. Available with Load Class "F" Ductile Iron
Slotted & Load Class "F" Ductile ADA Compliant Grates**

Figure Number	Description	Wt. (lbs.)	Polyester
9805-M	1 Meter Channel w/DI Rail and Secured DI Slotted Grates	69.5	\$515.50
9805-ADA	1 Meter Channel w/DI Rail and Secured DI ADA Grates	72.1	\$559.40
9805-EC	Closing End Cap	1.0	\$47.70
9805-GRT	Grate Removal Tool	0.3	\$48.80

9870 Series Grates - 6" Wide Trench Drain Systems

(For 9895 Series. For Locking Device specifications, see page 34)

Class A: Light Duty, EN 1433 Class A - 3,500 lbs, 70 psi. For Pedestrian and bicycle traffic.

Figure Number	Description	Length (m)	Wt. (lbs.)	LD type	List Price	List Price
					Grate Only	Grate w/ LD
9870-410-GP	Galvanized Steel Perforated	1	4.4	(QL)	\$94.40	\$121.80
		1/2	2.2	(QL)	\$61.30	\$75.00
9870-420-G	Galvanized Steel Slotted	1	3.5	(QL)	\$68.40	\$95.80
		1/2	1.7	(QL)	\$39.10	\$52.80
9870-447-SSADA	SS Slotted ADA Compliant	1	3.5	(QL)	\$970.60	\$998.00
		1/2	1.7	(QL)	\$647.10	\$660.80
9870-450-SS	Stainless Steel Slotted	1	6.0	(QL)	\$238.70	\$261.00
		1/2	3.0	(QL)	\$154.00	\$167.70
9870-451-SSPA	Stainless Steel Perforated	1	5.5	(QL)	\$271.30	\$298.70
		1/2	2.8	(QL)	\$167.00	\$180.70
9870-491-HPP	Polypropylene, Heel Proof	1/2	4.0	814	\$100.70	\$139.10
9870-494-PADAB	Black Polypropylene, ADA Compliant	1/2	6.5	(QL)	\$82.00	\$95.70
9870-494-PADAG	Gray Polypropylene, ADA Compliant	1/2	6.5	(QL)	\$84.70	\$98.40

Class C: Heavy Duty, EN 1433 Class C - 56,000 lbs, 1,162 psi. For commercial pneumatic tire traffic patterns, forklifts and tractor trailers.

Figure Number	Description	Length (m)	Wt. (lbs.)	LD type	Grate Only	Grate w/LD
9870-411-GPHD	Galv Steel Perforated (Reinforced)	1	10.0	(QL)	\$167.60	\$195.00
		1/2	5.0	(QL)	\$94.40	\$108.10

**GRATE ASSEMBLIES FOR 6" WIDE POLYMER CONCRETE SYSTEMS
9870 Series Grates**

(For Locking Device Specifications, see page 34)

Class C: Heavy Duty, EN 1433 Class C - 56,000 lbs, 1,162 psi. For commercial pneumatic tire traffic patterns, forklifts and tractor trailers.

Figure Number	Description	Length (m)	Wt. (lbs.)	LD type	List Price	List Price
					Grate Only	Grate w/LD
9870-425-GHD	Galv Steel Slotted(Reinforced)	1	8.5	(QL)	\$118.70	\$146.10
		1/2	4.2	(QL)	\$84.40	\$98.10
9870-430-SSM	SS Heavy Duty Mesh	1	5.5	(QL)	\$808.70	\$836.10
		1/2	2.8	(QL)	\$566.30	\$580.00
9870-455-SSHD	SS Slotted, Heavy Duty	1	9.0	(QL)	\$513.30	\$540.70
		1/2	4.5	(QL)	\$322.50	\$336.20
9870-462-DGC	Ductile Iron Slotted Grate	1/2	10.0	(QL)	\$93.40	\$107.10
9870-465-SSP	SS Perforated (Reinforced)	1	9.0	(QL)	\$586.70	\$611.10
		1/2	4.5	(QL)	\$342.40	\$356.10
9870-479-MD	DI Mosaic Pattern, HD	1/2	5.5	(QL)	\$113.30	\$127.00
9870-492-RC	Resin Composite Slotted	1/2	4.0	(QL)	\$101.20	\$114.90

Class E: Extra Heavy Duty, EN 1433 Class E - 135,000 lbs - 2,788 psi. For commercial solid tire traffic patterns, fork lifts and impacts from steel struts or metal wheels.

Figure Number	Description	Length (m)	Wt. (lbs.)	LD type	List Price	List Price
					Grate Only	Grate w/LD
9870-435-GHDE	Galv Steel Slotted (Extra Reinf'd)	1	13.0	(QL)	\$210.00	\$237.40
		1/2	6.5	(QL)	\$136.10	\$149.80
9870-461-M	Ductile Iron Slotted	1/2	10.5	(QL)	\$100.70	\$114.40
9870-478-ADA	DI Longitudinal (Meets ADA)	1/2	10.5	(QL)	\$100.70	\$114.40
9870-490-SSHDE	SS Slotted (Extra Reinforced)	1	13.5	(QL)	\$619.90	\$713.60
9870-490-SSHDE	SS Slotted (Extra Reinforced)	1/2	6.5	(QL)	\$413.10	\$426.80



**GRATE ASSEMBLIES FOR 6" WIDE POLYMER CONCRETE SYSTEMS
9870 Series Grates**

Locking Device Specifications (All Locking Bolts are 5/16 x 18 Thread)

Type	Description	List Price 1 Per 1/2 Meter
QL	QuickLok™ Securing Device, consisting of SS Grate Lug & Spring Clip Type Locking Bar (9895 Series)	\$13.70
811	2" Galvanized Hex Head Bolt with Galvanized Steel Locking Bar	\$15.30
814	2" SS Socket Head Bolt, with Stainless Steel Locking Bar	\$38.40
Miscellaneous Grate Accessories		
Figure Number	Description	List Price
9859	QuickLok™ Grate Lifting Tool	\$48.80



**9806 SERIES 10" WIDE NEUTRAL SHALLOW CHANNEL W/ INTEGRAL
DUCTILE IRON RAIL AND DUCTILE IRON SLOTTED GRATE**

**For Use When Installation Depth is Restricted. Available with Load Class "F" Ductile Iron
Slotted Grate & Load Class "E" Ductile ADA Compliant Grates**

Figure Number	Description	Wt. (lbs.)	List Price Polyester
9806-M	1 Meter Channel w/DI Rail and Secured DI Slotted Grates	122.4	\$726.00
9806-ADA	1 Meter Channel w/DI Rail and Secured DI ADA Grates	122.4	\$818.00
9806-EC	Closing End Cap	1.0	\$74.30
9806-GRT	Grate Removal Tool	0.3	\$48.80



**9878 SERIES 10" WIDE 1 METER SLOPED CHANNEL W/
INTEGRAL DUCTILE IRON RAIL EDGE AND DUCTILE IRON GRATES**

**For Use in Heavy Duty Commercial and Heavy Duty Industrial Applications
Load Class EN 1433 Class "F"**

Figure Number	Description	List Price
9878	1 Meter Sloped Channels 1 thru 40 w/Ductile Iron Rails and Ductile Iron Slotted Grates	\$1,032.40
9878N	1 Meter Neutral Channels 00, 010, 020, 030, 040 w/DI Rails and DI Grates	\$1,032.40
9878N-05	1/2 Meter Neutral Channels 0103, 0203, 0303, 0404 w/DI Rails and DI Grates	\$650.30
9878-ADA	1 Meter Sloped Channels 1 thru 40 w/Ductile Iron Rails and Ductile Iron ADA Compliant Grate	\$1,124.40
9878N-ADA	1 Meter Neutral Channels 00, 010, 020, 030, 040 w/Ductile Iron Rails and Ductile Iron ADA Compliant Grate	\$1,124.40
9878N-05-ADA	1/2 Meter Neutral Channels 0103, 0203, 0303, 0404 w/Ductile Iron Rails and Ductile Iron ADA Compliant Grate	\$736.60
9878-UNV4/6	4"/6" Universal Horizontal Inlet, Outlet and Closing End Cap	\$82.00

Figure Number	Description	Wt. (lbs)	List Price
9878-GRT	Grate Removal Tool	0.3	\$48.80
9878-FAT	4" Foul Air Trap	1.2	\$145.00
9878-DBS	Debris Strainer for 4" Bottom Outlet	0.2	\$92.80
9878-902D-CB	In-line Catch Basin w/DI Slotted Grate and Polypropylene Sediment Bucket		\$1,167.10
9878-902D-CB-ADA	In-line Catch Basin w/DI ADA Compliant Grate and Polypropylene Sediment Bucket		\$1,213.10
9878-621D-CB	600 Series Catch Basin w/DI Slotted Grate and Polypropylene Sediment Bucket		\$1,701.70
9878-621D-CB-ADA	600 Series Catch Basin w/DI ADA Compliant Grate and Polypropylene Sediment Bucket		\$1,749.70
9878-631D-CB	600 Series Catch Basin w/Riser, DI Slotted Grate and Polypropylene Sediment Bucket		\$2,056.20
9878-631D-CB-ADA	600 Series Catch Basin w/riser DI ADA Compliant Grate and Polypropylene Sediment Bucket		\$2,470.20

Figure Number	Description	Wt. (lbs)	List Price
9878-ID	Installation Device	4.0	\$68.00

1 Tube of PJ Seal per 3 Channels

9880 SERIES GRATES FOR 10" WIDE SYSTEMS 9896 & 9898

**Class A: Light Duty, EN 1433 Class A - 3,500 lbs, 70 psi.
for Pedestrian and Bicycle Traffic**

Figure Number	Description	Length (m)	Wt. (lbs.)	List Price	
				Grate Only	Grate w/LD
9880-647-SSADA	SSADA Longitudinal Grate	1	17.17	\$2,162.20	\$2,240.00
9880-648-SSADA	SSADA Longitudinal Grate	1/2	9.0	\$1,968.40	\$2,007.30

**Class C: Heavy Duty, EN 1433 Class C - 56,000 lbs -
1,162 psi. for Commercial Pneumatic Tire Traffic Patterns, Forklifts and Tractor Trailers**

Figure Number	Description	Length (m)	Wt. (lbs.)	List Price	
				Grate Only	Grate w/QL LD
9880-605-GM	Galvanized Mesh Grate	1	31.7	\$790.80	\$868.60
9880-606-GM	Galvanized Mesh Grate	1/2	16.0	\$406.60	\$445.50
9880-611-GPHD	Galvanized Perforated Grate	1	21.0	\$1,489.60	\$1,567.40
9880-613-GPHD	Galvanized Perforated Grate	1/2	10.5	\$892.70	\$931.60
9880-630-SSM	SS Mesh Grate	1	31.7	\$2,484.60	\$2,562.40
9880-631-SSM	SS Mesh Grate	1/2	16.0	\$1,580.90	\$1,619.80
9880-665-SSP	SS Perforated Grate	1	21.0	\$3,017.00	\$3,094.80
9880-666-SSP	SS Perforated Grate	1/2	10.5	\$1,769.20	\$1,808.10
9880-678-MADA	DI ADA Grate	1/2	22.0	\$193.60	\$232.50
9880-679-MD	DI Mosaic Grate "Drain Lock Only"	1/2	34.0	\$301.20	\$340.10
9880-680-IW	Wave Grate	1/2	28.0	\$235.60	\$274.50
9880-681-ID	Decorative Grate	1/2	27.0	\$312.10	\$351.00
				List Price	
Quick-Lock Securing Bar for 10" System				\$38.90	

**Class E: Heavy Duty, EN 1433 Class E - 135,000 lbs - 2,788 psi.
for Commercial Solid Tire Traffic Patterns, Forklifts and Impacts from Steel Struts or Metal Wheels**

Figure Number	Description	Length (m)	Wt. (lbs.)	List Price	
				Grate Only	Grate w/QL LD
9880-661-M	DI Slotted Grate	1/2	30.7	\$301.90	\$340.80



9896 Series 10" Wide 1 Meter Sloped Channel w/Integral Galvanized Steel Edge Rail

Figure Number	Description	Wt. (lbs.)	List Price
9896-G	1 Meter Channel With Galvanized Rail Edge	57.40	\$399.00
9896N-G	1 Meter Neutral Channels 00, 010, 020, 030, 040 w/Galvanized Rails		\$399.00
9896-N-05-G	1/2 Meter Neutral Channels 0103, 0203, 0303, 0404 w/Galvanized Rails		\$265.80
9896-EC	Universal End Cap	1.00	\$82.00
9896-SS	1 Meter Channel With Stainless Steel Rail Edge	57.40	\$629.20
9896N-SS	1 Meter Neutral Channels 00, 010, 020, 030, 040 w/Stainless Steel Rails		\$629.20
9896N-05-SS	1/2 Meter Neutral Channels 0103, 0203, 0303, 0404 w/Stainless Steel Rails		\$421.20
9896-ID	Installation Device		\$67.90
9896-GRT	Grate Removal Tool	0.30	\$48.80
	PJ Seal 1 tube per 3 Channels		

Catch Basins

Figure Number	Description	Wt. (lbs.)	Price Each
9896-902-G-CB *	In-line Catch Basin w/Galvanized Rails and Polypropylene Sediment Bucket		\$753.80
9896-902-S-CB *	In-line Catch Basin w/Stainless Steel Rails and Polypropylene Sediment Bucket		\$843.30
9896-621-G-CB **	600 Series Catch Basin w/Galvanized Rails and Polypropylene Sediment Bucket		\$1,006.80
9896-621-S-CB **	600 Series Catch Basin w/Stainless Steel Rails and Polypropylene Sediment Bucket		\$1,097.40
9896-631-G-CB **	600 Series Catch Basin w/riser, Galvanized Rails and Polypropylene Sediment Bucket		\$1,621.30
9896-631-S-CB **	600 Series Catch Basin w/riser, Stainless Steel Rails and Polypropylene Sediment Bucket		\$1,694.20
9896-GRT	Grate Removal Tool	0.3	\$48.80
9896-FAT	4" Foul Air Trap	1.2	\$131.90
9896-DBS	Debris Strainer for 4" Bottom Outlet	0.2	\$92.80

Figure Number	Description	Wt. (lbs.)	List Price
9898-G	1 Meter Channel With Galvanized Rail Edge	57.4	\$261.30
9898-EC-G	Galvanized End Cap	1.0	\$53.20
9898-SS	1 Meter Channel With Stainless Steel Rail Edge	57.4	\$576.10
9898-EC-SS	Stainless Steel End Cap	1.0	\$70.90
9898-GRT	Grate Removal Tool	0.3	\$48.80

* Available grates are shown on page 36 ** Available grates are shown on page 40

**9807 SERIES 14" WIDE NEUTRAL SHALLOW CHANNEL W/ INTEGRAL
DUCTILE IRON RAIL AND DUCTILE IRON SLOTTED ADA GRATE**

For Use When Installation Depth is Restricted
Available with Load Class "F" Ductile Iron Slotted
& Load Class "E" Ductile ADA Compliant Grates

Figure Number	Description	Wt. (lbs.)	List Price Polyester
9807-M	1 Meter Channel w/DI Rail and Secured DI Slotted Grates	182.0	\$1,064.80
9807-ADA	1 Meter Channel w/DI Rail and Secured DI ADA Grates	182.0	\$1,160.80
9807-EC	Closing End Cap	1.0	\$92.70
9807-GRT	Grate Removal Tool	0.3	\$48.80

**9879 SERIES 14" WIDE 1 METER SLOPED CHANNEL
W/INTEGRAL DUCTILE IRON RAIL EDGE AND DUCTILE IRON GRATES**

For Use in Heavy Duty Commercial & Heavy Duty Industrial Applications.
Load Class EN 1433 Class "F" Ductile Iron Slotted Grate.
Load Class EN 1433 Class "E" Ductile Iron ADA Grate

Figure Number	Description	Wt. (lbs.)	List Price
9879	1 Meter Sloped Channels 1 thru 40 w/Ductile Iron Rails and Ductile Iron Slotted Grates		\$1,685.10
9879N	1 Meter Neutral Channels 00, 010, 020, 030, 040 w/DI Rails and DI Grates		\$1,685.10
9879N-05	1/2 Meter Neutral Channels 0103, 0203, 0303, 0404 w/DI Rails and DI Grates		\$1,172.90
9879-ADA	1 Meter Sloped Channels 1 thru 40 w/Ductile Iron Rails and Ductile Iron ADA Compliant Grate		\$1,781.10
9879N-ADA	1 Meter Neutral Channels 00, 010, 020, 030, 040 w/Ductile Iron Rails and Ductile Iron ADA Compliant Grate		\$1,781.10
9879N-05-ADA	1/2 Meter Neutral Channels 0103, 0203, 0303, 0404 w/Ductile Iron Rails and DI ADA Compliant Grate		\$1,220.80
9879-UNV6/8/10	6"/8"/10: Universal Horizontal Inlet, Outlet and Closing End Cap		\$158.60
9879-GRT	Grate Removal Tool	0.3	\$48.80
9879-FAT	4" Foul Air Trap	1.2	\$145.00
9879-903D-CB	In-line Catch Basin w/DI Slotted Grate and Polypropylene Sediment Bucket		\$1,868.50
9879-903D-CB-ADA	In-line Catch Basin w/DI ADA Compliant Grate and Polypropylene Sediment Bucket		\$1,916.50
9879-904D-CB	In-line Catch Basin w/DI Slotted Grate and Polypropylene Sediment Bucket		\$2,589.00
9879-904D-CB-ADA	In-line Catch Basin w/DI ADA Compliant Grate and Polypropylene Sediment Bucket		\$2,637.00
9879-ID	Installation Device	4.0	\$68.00



9897 AND 9899 SERIES GRATES

Figure Number	Description	Length (m)	Wt. (lbs.)	List Price Grate Only	List Price Grate w/QL LD
CLASS A					
9890-847-SSADA	SS ADA Longitudinal Grate	1		\$3,631.90	\$3,773.90
9890-848-SSADA		1/2	14.3	\$3,324.60	\$3,395.60
CLASS C					
9890-805-GM	Galvanized Mesh Grate	1/2	29.5	\$839.80	\$910.80
9890-811-GP	Galvanized Perforated Grate	1		\$2,070.40	\$2,212.40
9890-813-GP		1/2	15.0	\$1,289.50	\$1,360.50
9890-830-SSM	Stainless Steel Mesh Grate	1/2	29.5	\$2,938.70	\$3,099.70
9890-865-SSP	Stainless Steel Perforated Grate	1		\$4,140.80	\$4,282.80
9890-866-SSP		1/2	15.0	\$2,602.80	\$2,673.80
9890-878-MADA	DI ADA Grate	1/2	35.0	\$349.10	\$420.10
9890-879-MD	DI Mosaic Grate	1/2	47.3	\$485.30	\$556.30
9890-880-IW	DI Wave Grate	1/2	48.0	\$526.50	\$597.50
9890-881-ID	DI Decorative Grate	1/2	47.0	\$491.30	\$562.30
CLASS E					
9890-861-M	DI Slotted Grate	1/2	48.0	\$461.60	\$532.60
QuickLok™	Grate Securing Bar for 14" System		0.6		\$71.00

9895 SERIES 621 AND 631 CATCH BASIN 1/2 METER GRATES ONLY, See 9890 Series Grates

9896 SERIES 621 AND 631 CATCH BASIN 1/2 METER GRATES ONLY, See 9890 Series Grates

9897 SERIES 903 AND 904 CATCH BASIN 1/2 METER GRATES ONLY, See 9890 Series Grates

9897 SERIES CATCH BASINS

Figure Number	Description	List Price
9897-903-G-CB	In line Catch Basin W/Galv. Steel Rails and Polypropylene Sediment Bucket	\$1,122.50
9897-903-S-CB	In line Catch Basin W/Galv. /SS Rails and Polypropylene Sediment Bucket	\$1,232.20
9897-904-G-CB	In line Catch Basin W/Galv. Steel Rails and Polypropylene Sediment Bucket	\$1,335.70
9897-904-S-CB	In line Catch Basin W/Galv. /SS Rails and Polypropylene Sediment Bucket	\$1,375.90

9897 14" Channel Series Channel Slope System with Metal Rails

Sloped trench system with an integrally cast metal rail edge. For Catch Basins and Grates, see pg 40.

Figure Number	Description	Description	Wt. (lbs.)	List Price
9897	1 m Sloped Channels 1 thru 40 w/Galvanized Rails			\$559.40
9897N	1 m Neutral Channels 00, 010, 020, 030 or 040 w/Galvanized Rails			\$559.40
9897N-5	1/2 m Neutral Channels 0103, 0203, 0303 or 0403 w/Galvanized rails			\$372.70
9897-SS	1 m Sloped Channels 1 thru 40 w/Stainless Steel Rails			\$825.40
9897N-SS	1 m Neutrals 00, 010, 020 and 030 w/Stainless Steel Rails			\$825.40
9897N-05-SS	1/2 m Neutral Channels 0013, 0103, 0203, 0303 or 0403 w/Stainless Steel Rails			\$559.40
6", 8", 10" Universal Inlet, Outlet and Closing End Caps				
9897-UNV-6810	6", 8", 10" Universal Horizontal Inlet, Outlet and Closing End Cap		2.5	\$142.20
For Channel Joint Sealant, see pg 42				
Polyester Regularly Furnished.				
9897-ID	Installation device			\$68.00

**9899 SERIES 14" WIDE 1 METER
SHALLOW NEUTRAL CHANNEL W/ INTEGRAL METAL EDGE RAIL**

Figure Number	Description	Description	Wt. (lbs.)	List Price
9899-G	1 Meter Channel With Galvanized Rail Edge		72.0	\$356.70
9899-EC-G	Galvanized End Cap		1.0	\$79.80
9899-SS	1 Meter Channel With Stainless Steel Rail Edge		72.0	\$686.90
9899-EC-SS	Stainless Steel End Cap		1.0	\$91.10
9899-GRT	Grate Removal Tool		0.3	\$48.80

See Page 40 for Grates

Accessories

9853 Shovel Head

Facilitates cleaning of trench drains. Shaped to match the interior bottom of all 4" ID channels.

Figure Number	Description	Wt. (lbs.)	Price Each
9853	Shovel Head	1.5	\$145.00

9854 Strainer

Figure Number	Description	Wt. (lbs.)	Price Each
9854	Strainer	1.5	\$96.80

Channel Joint Sealant

For Polyester **Fiberglass** Channels.

Figure Number	Description	Contents	Price Each
FRK-08	Polyester Fiberglass Repair Kit and Sealant (4-6 Joints)	8 oz.	\$95.30
FRK-28	Polyester Fiberglass Repair Kit and Sealant (10-16 Joints)	28 oz.	\$246.80
	Flammable can't Air Ship		

For Polyester **Polymer Concrete** Channels.

Figure Number	Description	Contents	Price Each
PJ Seal-P	Tube (fits standard caulking gun) for Polyester Channel Applications. (1) tube joins approx. (7) 6" wide channel sections (1) tube joins approx. (5) 10" wide channel sections (1) tube joins approx. (3) 14" wide channel sections	10 oz.	\$30.10
ACO Bond-P	Joint and crack sealant material kit for Polyester Channel Applications. One gallon pail. (Joins 20 - 25 channel sections)	2.5 lbs.	\$453.90